

## GENERAL NOTES

- PERFORM INSTALLATION IN ACCORDANCE WITH THE CURRENT EDITION OF THE CANADIAN ELECTRICAL CODE (CEC), THE NFPA, AND THE BAHAMAS BUILDING CODE. EQUIPMENT SHALL BE LISTED BY A UNDERWRITERS TESTING LABORATORY (UL).
- PROVIDE AND MAINTAIN A CLEAR WORKING SPACE ABOUT ELECTRIC EQUIPMENT (SWITCHBOARDS, PANELBOARDS, ETC.) IN ACCORDANCE WITH CEC ARTICLES.
- USE 600 VAC CIRCUIT BREAKERS IN 480V AND 480Y/277V SWITCHBOARDS, PANELBOARDS AND MOTOR CONTROL CENTERS.
- PROVIDE CIRCUIT BREAKERS WITH UL LISTED INTERRUPTING RATING (RMS SYMMETRICAL AMPERES) GREATER THAN THE AVAILABLE FAULT CURRENT SHOWN ON THE ELECTRICAL ONE-LINE DIAGRAM.
- PROVIDE PADLOCKING PROVISIONS FOR EACH TWO- AND THREE-POLE CIRCUIT BREAKER.
- BOND RACEWAYS AND THE FRAMES AND ENCLOSURES OF MOTORS, BREAKERS, SWITCHES, AND OTHER ELECTRICAL EQUIPMENT TO THE BUILDING GROUNDING SYSTEM. INSTALL AN INSULATED EQUIPMENT GROUND CONDUCTOR IN EACH RACEWAY OR CONDUIT. SIZE EQUIPMENT GROUND CONDUCTOR IN ACCORDANCE WITH CEC TABLE.
- IDENTIFY NEW BRANCH CIRCUITS AT THE PANEL AND AT THE LOAD OUTLET, RECEPTACLE AND SWITCH. IDENTIFY THE PURPOSE OF INDIVIDUAL CIRCUIT BREAKERS, SAFETY SWITCHES AND MOTOR STARTERS BY MEANS OF NAMEPLATES AS INDICATED.
- ROUTE CONDUITS TO SUIT EQUIPMENT AND BUILDING STRUCTURE. USE EMT IN AIR PLenums AND RIGID GALVANIZED STEEL FOR WORK EXPOSED TO PHYSICAL DAMAGE. PVC IS TO BE USED IN ALL OTHER AREAS. USE MINIMUM 3/4 INCH CONDUIT EXCEPT AS FOLLOWS: 1/2" CONDUIT MAY BE USED FOR 20 AMP GENERAL LIGHT AND POWER CIRCUITS AND FOR CONTROL CIRCUITS; 3/8" FLEXIBLE METAL CONDUIT MAY BE USED TO CONNECT LIGHT FIXTURES IN SUSPENDED CEILINGS. USE LIQUID-TIGHT FLEXIBLE METAL CONDUIT FOR FLEXIBLE CONNECTIONS TO EQUIPMENT IN MECHANICAL ROOMS OR OUTDOORS.
- SEAL AROUND CONDUIT PENETRATIONS THROUGH INTERIOR WALLS AND FLOORS SEPARATING AREAS TO RESTORE ORIGINAL FIRE RATING; USE A UL CLASSIFIED FIRE SEALANT. SEAL PENETRATIONS THROUGH ROOF AND EXTERIOR WALLS TO MAKE WATERPROOF. REQUEST INSPECTION OF FIRE SEALS BY ELECTRICAL INSPECTOR FROM AUTHORITY HAVING JURISDICTION BEFORE AND AFTER PLACEMENT OF FIRE SEAL MATERIALS.
- USE 12 AWG OR LARGER CONDUCTORS FOR POWER WIRING. USE 14 AWG STRANDED CONDUCTORS FOR CONTROL WIRING UNLESS OTHERWISE SPECIFIED OR SHOWN ON THE DRAWINGS.
- USE ONLY COPPER CONDUCTORS ON CIRCUITS 600V AND LESS. CONDUCTORS 10 AWG AND SMALLER SHALL BE SOLID AND 8 AWG AND LARGER AWG SHALL BE STRANDED. PROVIDE TYPE THHN/THWN WIRE INSULATION; XHHW INSULATION MAY BE USED FOR 1 AWG AND LARGER.

- USE THE FOLLOWING CONDUCTOR COLOR CODES:
 

	208Y/120 VOLT	480Y/277 VOLT
PHASE A	BLACK	BROWN
PHASE B	RED	ORANGE
PHASE C	BLUE	YELLOW
NEUTRAL	WHITE	GRAY
EQUIP. GROUND	GREEN	GREEN

ISOLATED GROUND SHALL BE GREEN WITH YELLOW TRACER.
- ARRANGE CONNECTIONS FOR SINGLE PHASE CIRCUITS TO ACHIEVE THREE PHASE LOAD BALANCE WITHIN 20% OF THE AVERAGE PHASE LOAD CURRENT. UNGROUNDED CONDUCTORS USING A COMMON NEUTRAL MUST ORIGINATE FROM DIFFERENT PHASES.
- INSTALL OUTDOOR EQUIPMENT TO BE WEATHERPROOF AND TO EXCLUDE BIRDS AND RODENTS WITH MAXIMUM 1/2" DIAMETER UNPROTECTED OPENINGS IN ENCLOSURES.
- PROVIDE LIGHTNING PROTECTION IN ACCORDANCE WITH NFPA 780. PROVIDE MATERIAL THAT IS UL LABELED FOR LIGHTNING PROTECTION SERVICE. THE LIGHTNING PROTECTION SYSTEM DESIGN AND INSTALLATION SHALL FOLLOW THAT SHOWN ON THE DRAWINGS.
- TEST CONDUCTORS FOR CONTINUITY AND FREEDOM FROM SHORTS AND UNINTENTIONAL GROUNDS.
- ELECTRICAL EQUIPMENT SPECIFIED IN THIS DOCUMENT SHALL BE ACCEPTANCE TESTED AND INSPECTED IN ACCORDANCE WITH GOOD ENGINEERING PRACTICE.
- REPAIR AREAS DAMAGED DURING CONSTRUCTION TO MATCH ADJACENT AREAS WITH RESPECT TO BOTH COLOR AND FINISH.
- IF A CONFLICT ARISES BETWEEN THE FIELD CONDITIONS AND THESE GENERAL ELECTRICAL REQUIREMENTS, CONTACT THE ARCHITECT/ENGINEER FOR DIRECTION.
- TIE-INS TO EXISTING POWER SYSTEMS WILL BE PERFORMED BY THE SUB-CONTRACTOR.

MAIN CIRCUIT BREAKER 400A										PANEL P1				SHORT CIRCUIT RATING: 25,000A SYM			
TYPE: LAL36400MB + SSP025BA08D,TVS12RMJ		SOT'D: NQ442L4C, MH62, NC62V, FHR, NOMB4LA		MAIN BUS RATING: 400A		MCB VOLTAGE: 120/208V		PHASE: 3ø 4W		KILOWATTS: ***		POWER FACTOR: 0.85					
CIR NO.	CIRCUIT USE	KVA	COND WIRE SIZE	BREAKER TRIP	NEUTRAL RYB	BREAKER TRIP	WIRE SIZE	COND WIRE SIZE	KVA	CIRCUIT USE	CIR NO.						
1	ELEC/AHU RM. OUTLETS: P1-1	1.0	1/2 #12	20 1	-	-	-	-	-	OPEN AREA OUTLETS: P1-2	2						
3	OPEN AREA OUTLETS: P1-3	1.0	1/2 #12	20 1	-	-	-	-	-	OPEN AREA OUTLETS: P1-4	4						
5	OPEN AREA OUTLETS: P1-5	1.0	1/2 #12	20 1	-	-	-	-	-	OPEN AREA OUTLETS: P1-6	6						
7	MEETING ROOM OUTLETS: P1-7	1.0	1/2 #12	20 1	-	-	-	-	-	OFFICE 1 OUTLETS: P1-8	8						
9	OFFICE 2 & 3 OUTLETS: P1-9	1.0	1/2 #12	20 1	-	-	-	-	-	OPEN AREA OUTLETS: P1-10	10						
11	PRINTER OUTLETS: P1-11	1.0	1/2 #12	20 1	-	-	-	-	-	PRINTER OUTLETS: P1-12	12						
13	PRINTER OUTLETS: P1-13	1.0	1/2 #12	20 1	-	-	-	-	-	PRINTER OUTLETS: P1-14	14						
15	OPEN AREA OUTLETS: P1-15	1.0	1/2 #12	20 1	-	-	-	-	-	RESTROOM OUTLETS: P1-16	16						
17	F.RESTROOM HAND DRYER: P1-17	1.0	1/2 #12	20 1	-	-	-	-	-	M.RESTROOM HAND DRYER: P1-18	18						
19	OUTLETS: P1-19	1.0	1/2 #12	20 1	-	-	-	-	-	OUTLETS: P1-20	20						
21	LIGHTS: P1-21	1.5	1/2 #12	20 1	-	-	-	-	-	LIGHTS: P1-22	22						
23	FIRE ALARM CONTROL PANEL: P1-23	1.0	1/2 #12	20 1	-	-	-	-	-	SPARE:	24						
25	SPARE:			15 1	-	-	-	-	-	SPARE:	26						
27	SPARE:			15 1	-	-	-	-	-	SPARE:	28						
29	SPARE:			15 1	-	-	-	-	-		30						
31					-	-	-	-	-		32						
33					-	-	-	-	-		34						
35					-	-	-	-	-		36						
37					-	-	-	-	-		38						
39					-	-	-	-	-		40						
41					-	-	-	-	-		42						
TOTAL CONNECTED KVA										***					***	TOTAL CONNECTED KVA	
					R					R							
					Y					Y							
					B					B							

MAIN CIRCUIT BREAKER 400A										PANEL P2				SHORT CIRCUIT RATING: 25,000A SYM			
TYPE: LAL36400MB + SSP025BA08D,TVS12RMJ		SOT'D: NQ442L4C, MH62, NC62V, FHR, NOMB4LA		MAIN BUS RATING: 400A		MCB VOLTAGE: 120/208V		PHASE: 3ø 4W		KILOWATTS: ***		POWER FACTOR: 0.85					
CIR NO.	CIRCUIT USE	KVA	COND WIRE SIZE	BREAKER TRIP	NEUTRAL RYB	BREAKER TRIP	WIRE SIZE	COND WIRE SIZE	KVA	CIRCUIT USE	CIR NO.						
1	ELEC/AHU RM. OUTLETS: P2-1	1.0	1/2 #12	20 1	-	-	-	-	-	F.RESTROOM HAND DRYER: P2-2	2						
3	M.RESTROOM HAND DRYER OUTLETS: P2-3	1.0	1/2 #12	20 1	-	-	-	-	-	RESTROOM OUTLETS: P2-4	4						
5	OPEN AREA OUTLETS: P2-5	1.0	1/2 #12	20 1	-	-	-	-	-	OPEN AREA OUTLETS: P2-6	6						
7	OPEN AREA OUTLETS: P2-7	1.0	1/2 #12	20 1	-	-	-	-	-	OPEN AREA OUTLETS: P2-8	8						
9	OPEN AREA OUTLETS: P2-9	1.0	1/2 #12	20 1	-	-	-	-	-	OPEN AREA OUTLETS: P2-10	10						
11	STORAGE OUTLETS: P2-11	1.0	1/2 #12	20 1	-	-	-	-	-	PRINTER OUTLETS: P2-12	12						
13	PRINTER OUTLETS: P2-13	1.0	1/2 #12	20 1	-	-	-	-	-	PRINTER OUTLETS: P2-14	14						
15	IT. CLOSET OUTLETS: P2-15	1.0	1/2 #12	20 1	-	-	-	-	-	MEETING ROOM OUTLETS: P2-16	16						
17	OFFICE 1 OUTLETS: P2-17	1.0	1/2 #12	20 1	-	-	-	-	-	OFFICE 2&3 OUTLETS: P2-18	18						
19	MICROWAVE: P2-19	1.0	1/2 #12	20 1	-	-	-	-	-	REFRIGERATOR: P2-20	20						
21	KITCHEN OUTLETS: P2-21	1.5	1/2 #12	20 1	-	-	-	-	-	LIGHTS: P1-22	22						
23	FIRE ALARM CONTROL PANEL: P2-23	1.0	1/2 #12	20 1	-	-	-	-	-	SPARE:	24						
25	SPARE:			15 1	-	-	-	-	-	SPARE:	26						
27	SPARE:			15 1	-	-	-	-	-	SPARE:	28						
29	SPARE:			15 1	-	-	-	-	-		30						
31					-	-	-	-	-		32						
33					-	-	-	-	-		34						
35					-	-	-	-	-		36						
37					-	-	-	-	-		38						
39					-	-	-	-	-		40						
41					-	-	-	-	-		42						
TOTAL CONNECTED KVA										***					***	TOTAL CONNECTED KVA	
					R					R							
					Y					Y							
					B					B							

30/06/23 DESIGN DEVELOPMENT B&A  
NO. DATE REVISION BY

**BROWN & ASSOCIATES**  
Engineers & Consultants, Limited

PROJECT  
PROPOSED RENOVATIONS FOR UTILITIES REGULATION & COMPETITION AUTHORITY - FREDERICK HOUSE

LOCATION  
FREDERICK STREET, NASSAU, BAHAMAS.

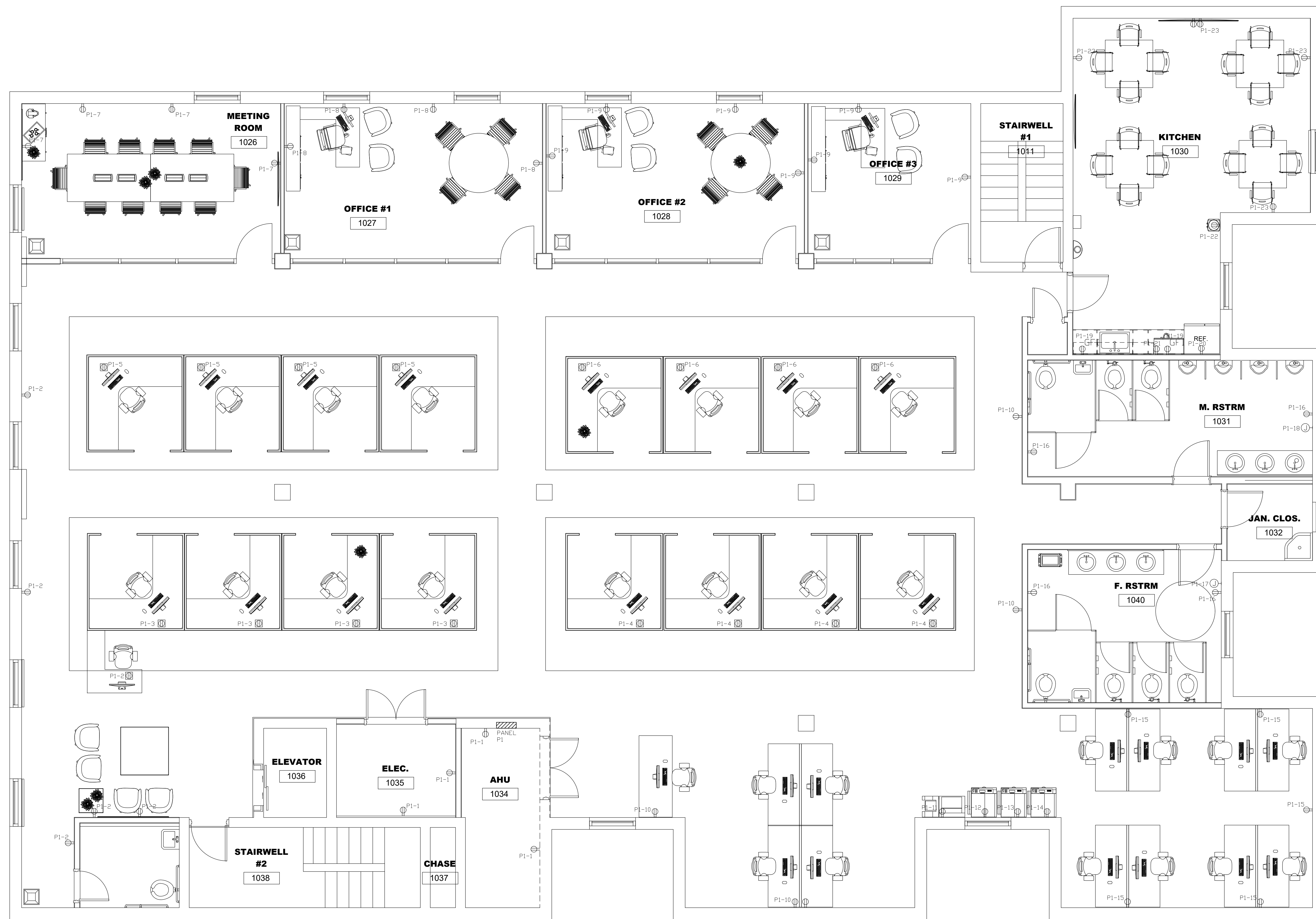
TITLES  
ELECTRICAL NOTES & PANEL SCH.

SCALE  
N.T.S.

CLIENT  
URCA

PROJECT ARCHITECT TDG	NUMBER PROJECT B&A	DRAWING NO. E-1
DRAWN BY DATE OCT.12	DATE OCT.12	REF URCA

The drawings are schematic and indicate general layout of equipment and approximate dimensions, unless a dimensional detail is included. The drawings do not show all architectural and structural details. Refer to the contract set of building drawings and check for any variations from the plans. Take any information regarding accurate dimensions from the building drawings or at the building.



LEGEND	
	DUPLEX RECEPTACLE
	DUPLEX GFI RECEPTACLE
	DISCONNECT SWITCH
	RECESSED PANEL
	SURFACE PANEL

The drawings are schematic and indicate general layout of equipment and approximate dimensions, unless a dimensional detail is included. The drawings do not show all architectural and structural details. Refer to the contract set of building drawings and check for any variations from the plans. Take any information requiring accurate dimensions from the building drawings on site.

30/06/23 DESIGN DEVELOPMENT B&A  
 NO. DATE REVISIONS BY

**BROWN & ASSOCIATES**  
 Engineers & Consultants, Limited

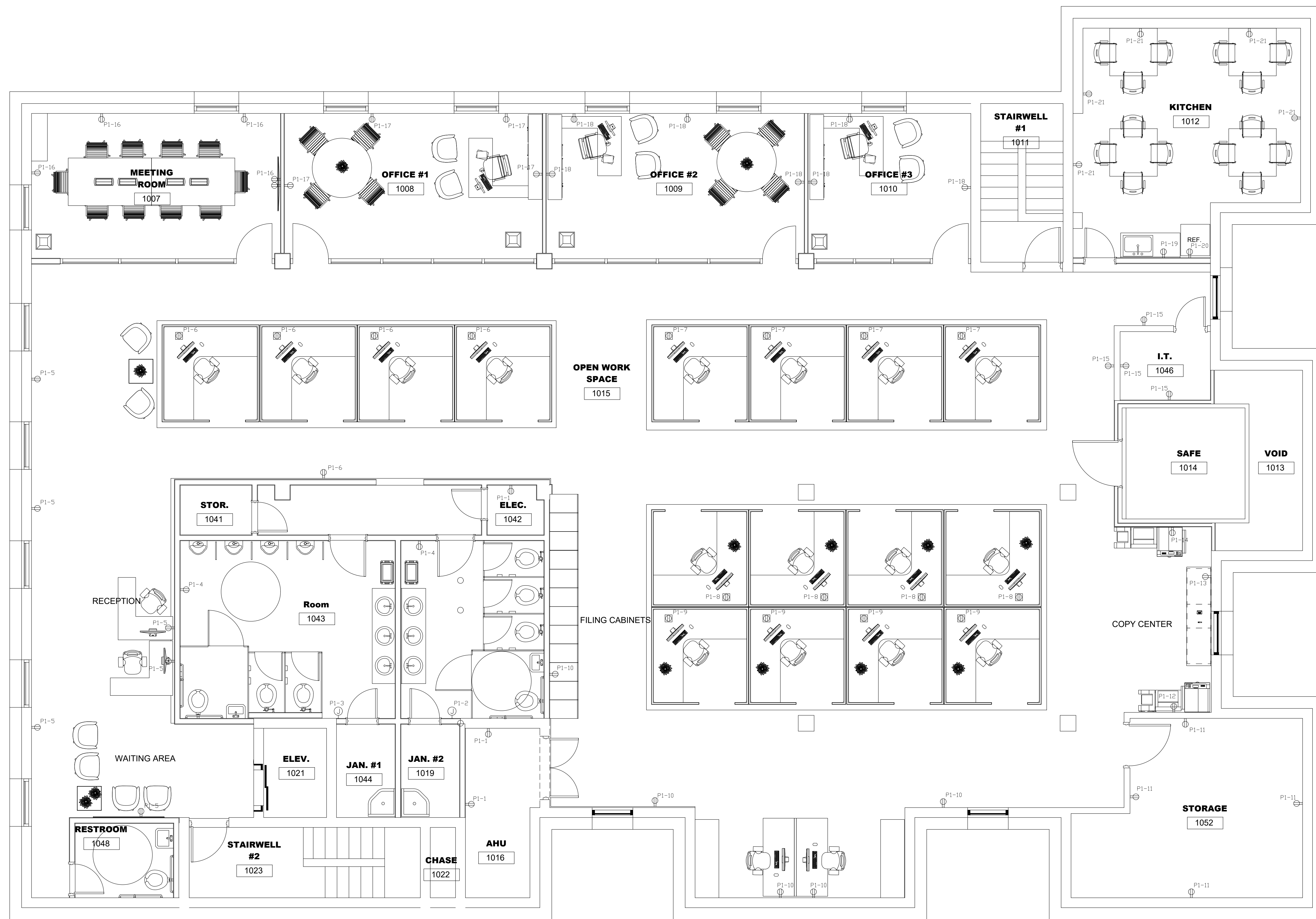
PROJECT  
 PROPOSED RENOVATIONS FOR  
 UTILITIES REGULATION & COMPETITION  
 AUTHORITY - FREDERICK HOUSE

LOCATION  
 FREDERICK STREET, NASSAU, BAHAMAS.

TITLE  
 SECOND FLOOR POWER LAYOUT  
 SCALE  
 1/4" = 1'-0"

CLIENT  
 URCA

PROJECT ARCHITECT	NUMBER	DRAWING NO.
TDG	PROJECT	E-2
DRAWN BY B&A		REF URCA
DATE OCT.12		



The drawings are schematic and indicate general layout of equipment and approximate dimensions, unless a dimensional detail is included. The drawings do not show all architectural and structural details. Refer to the contract set of building drawings and check for any variations from the plans. Take any information requiring accurate dimensions from the building drawings on all the building.

30/06/23 DESIGN DEVELOPMENT B&A  
 NO. DATE REVISION BY

**BROWN & ASSOCIATES**  
 Engineers & Consultants, Limited

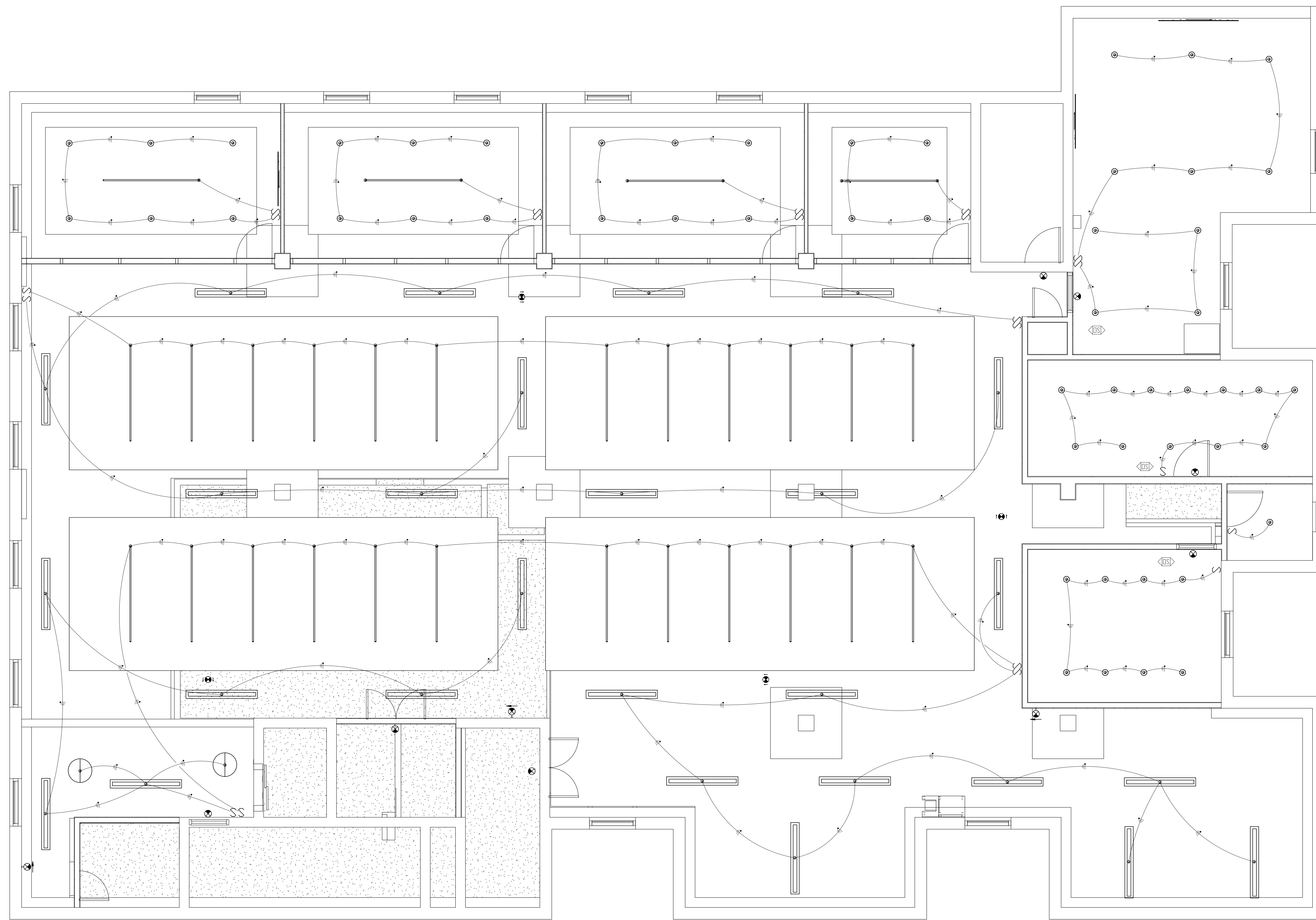
PROJECT  
 PROPOSED RENOVATIONS FOR  
 UTILITIES REGULATION & COMPETITION  
 AUTHORITY - FREDERICK HOUSE

LOCATION  
 FREDERICK STREET, NASSAU, BAHAMAS.

TITLE  
 THIRD FLOOR POWER LAYOUT  
 SCALE 1/4" = 1'-0"

CLIENT  
 URCA

PROJECT ARCHITECT	NUMBER PROJECT	DRAWING NO.
TDG		E-3
DRAWN BY B&A		REF URCA
DATE OCT.12		



The drawings are diagrammatic and indicate general layout of equipment and approximate dimensions, unless a dimensional detail is included. The drawings do not show all architectural and structural details. Refer to the contract set of building drawings and check for any variations from the plans. Take any information requiring accurate dimensions from the building drawings on site.

30/06/23 DESIGN DEVELOPMENT B&A  
 NO. DATE REVISION BY

**BROWN & ASSOCIATES**  
 Engineers & Consultants, Limited

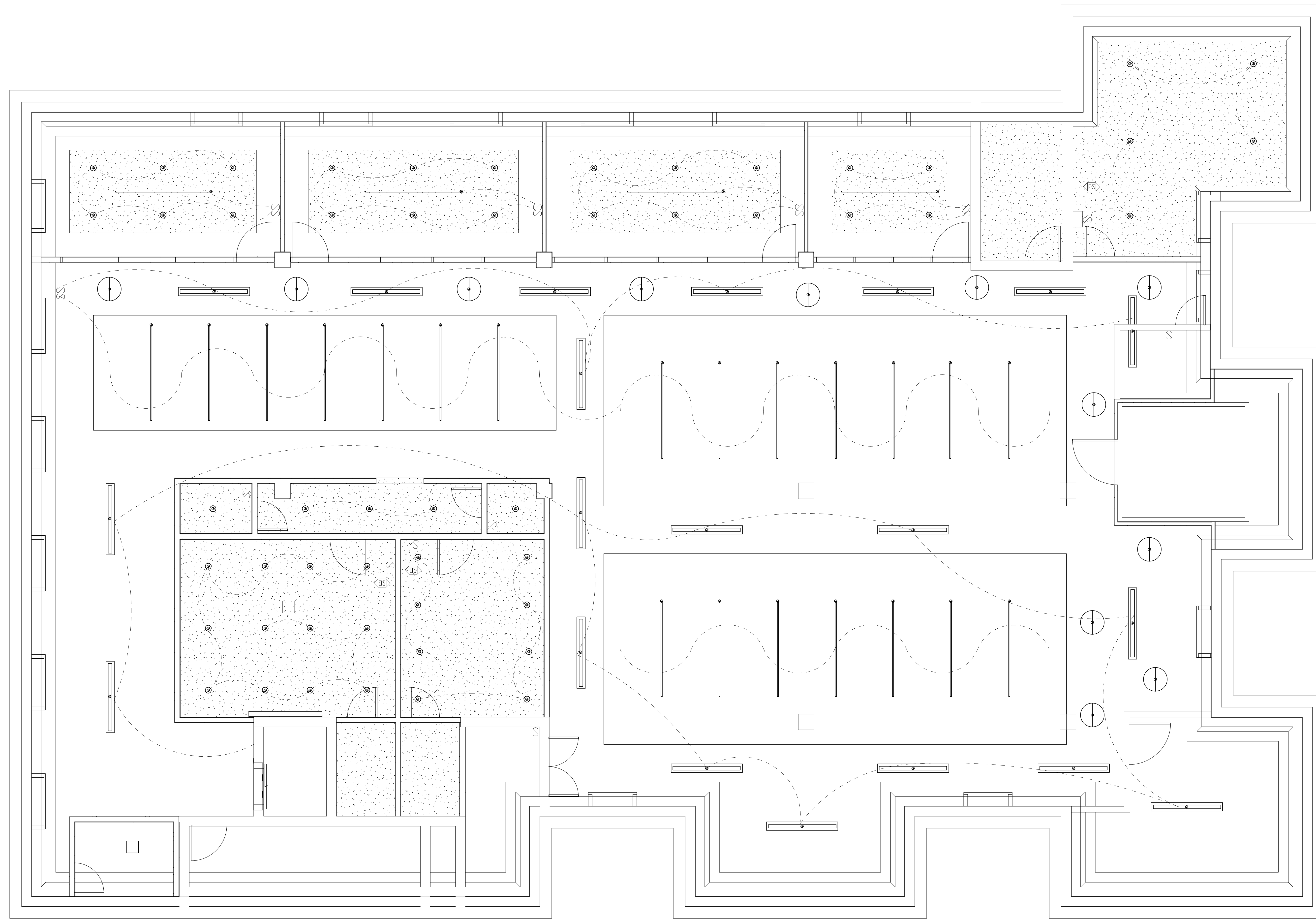
PROJECT  
 PROPOSED RENOVATIONS FOR  
 UTILITIES REGULATION & COMPETITION  
 AUTHORITY - FREDERICK HOUSE

LOCATION  
 FREDERICK STREET, NASSAU, BAHAMAS.

TITLE  
 SECOND FLOOR LIGHTING LAYOUT  
 SCALE 1/4" = 1'-0"

CLIENT  
 URCA

PROJECT ARCHITECT	NUMBER	DRAWING NO.
TDG	PROJECT	E-4
DRAWN BY B&A		REF URCA
DATE OCT.12		



The drawings are diagrammatic and indicate general layout of equipment and approximate dimensions, unless a dimensional detail is included. The drawings do not show all architectural and structural details. Refer to the contract set of building drawings and check for any variations from the plans. Take any information requiring accurate dimensions from the building drawings or at the building.

30/06/23 DESIGN DEVELOPMENT B&A  
 NO. DATE REVISION BY

**BROWN & ASSOCIATES**  
 Engineers & Consultants, Limited

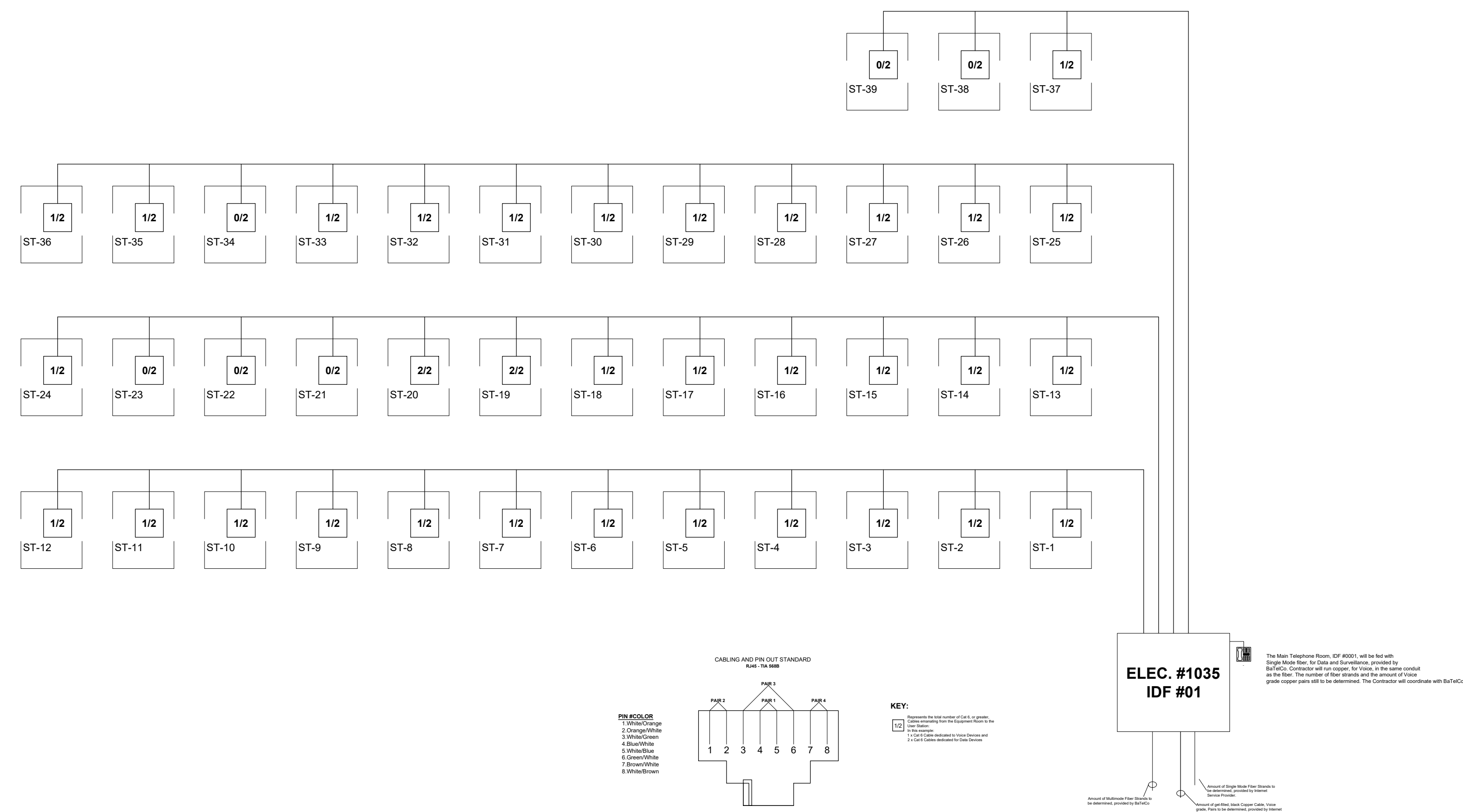
PROJECT  
 PROPOSED RENOVATIONS FOR  
 UTILITIES REGULATION & COMPETITION  
 AUTHORITY - FREDERICK HOUSE

LOCATION  
 FREDERICK STREET, NASSAU, BAHAMAS.

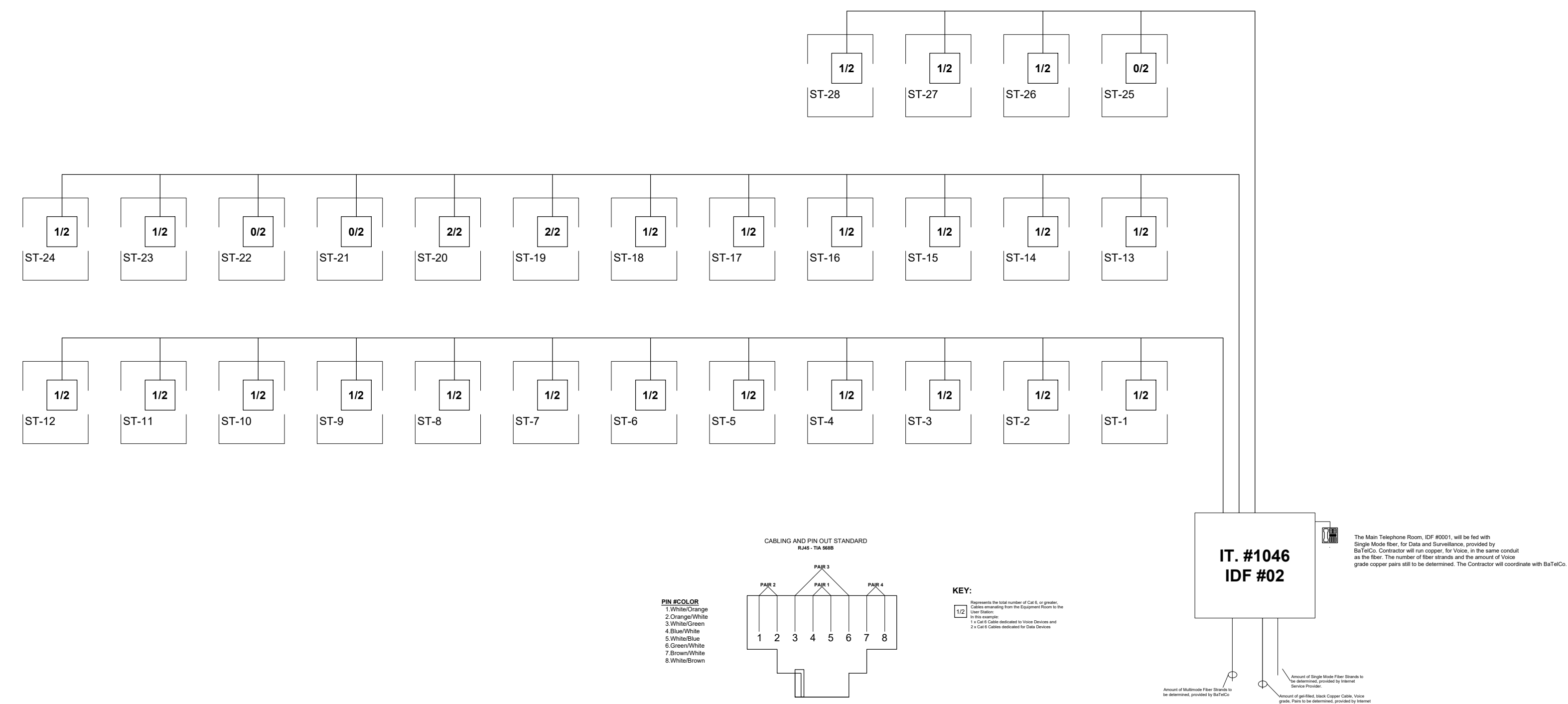
TITLE  
 THIRD FLOOR LIGHTING LAYOUT  
 SCALE 1/4" = 1'-0"

CLIENT  
 URCA

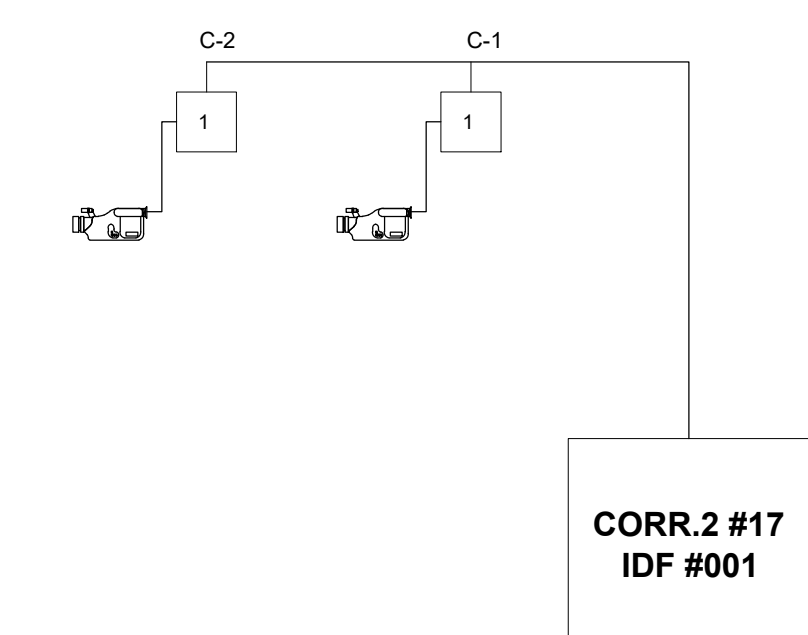
PROJECT ARCHITECT	NUMBER	DRAWING NO.
TDG	PROJECT	E-5
DRAWN BY B&A		REF URCA
DATE OCT.12		



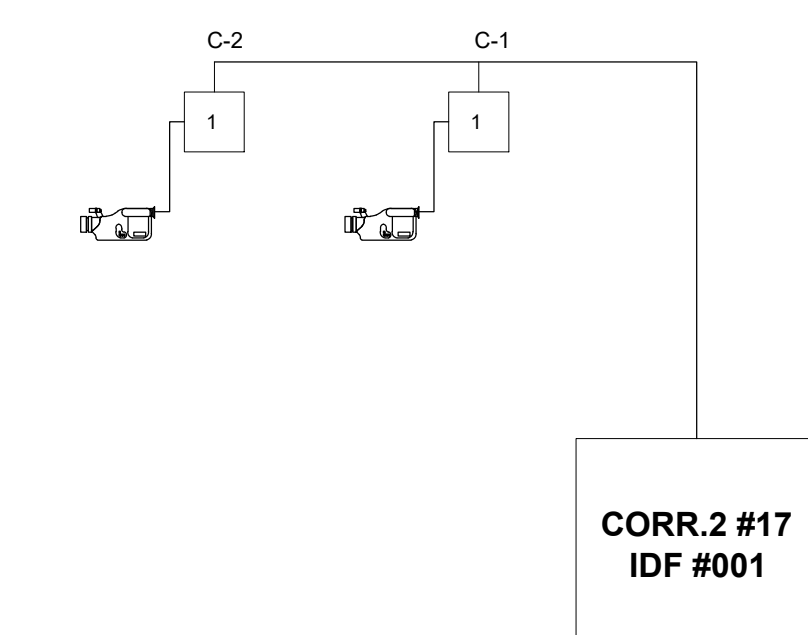
**SECOND FLOOR IT RISER**  
N.T.S.



**THIRD FLOOR IT RISER**  
N.T.S.



**SECOND FLOOR CCTV RISER**  
N.T.S.



**THIRD FLOOR CCTV RISER**  
N.T.S.

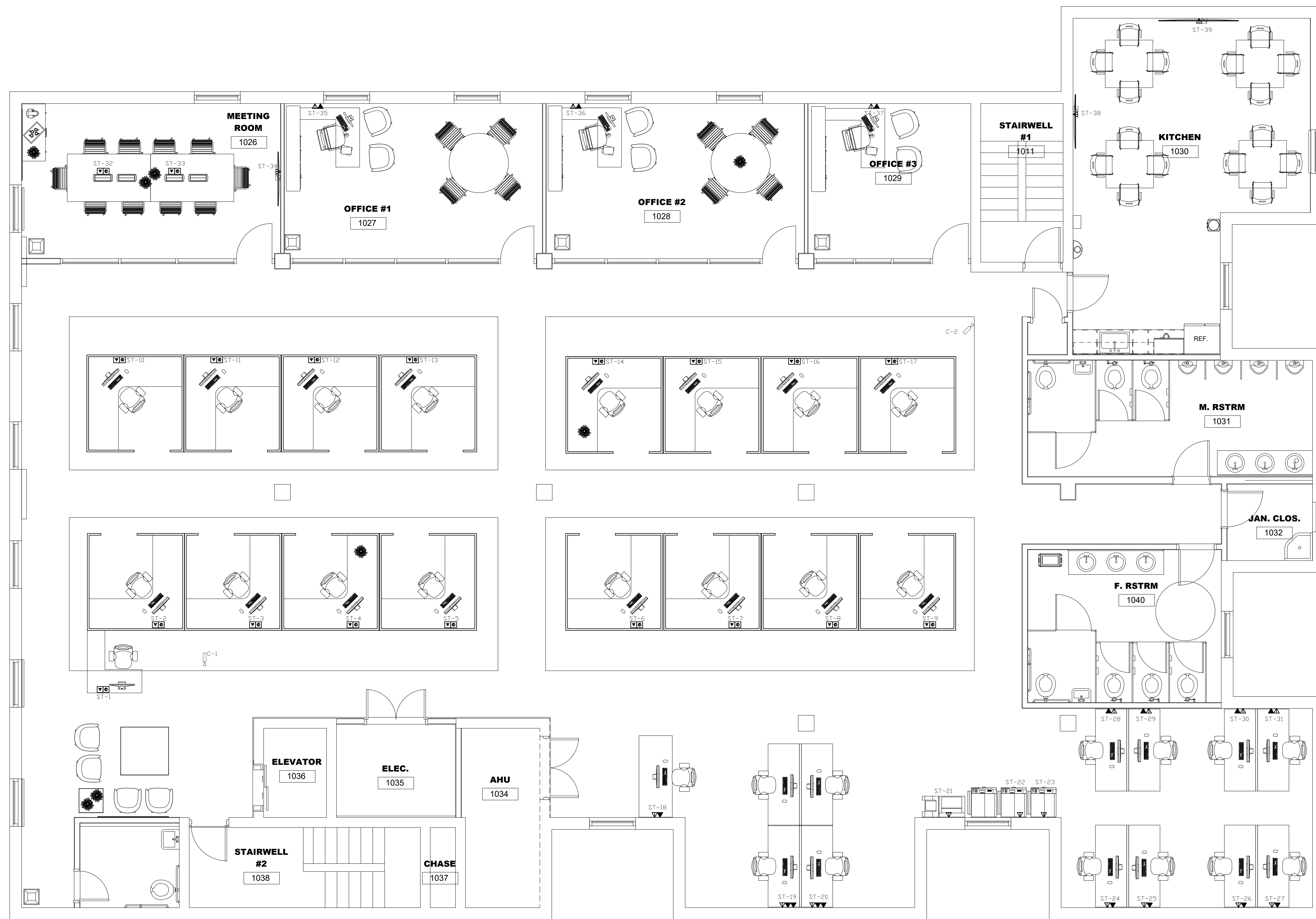
The drawings are diagrammatic and indicate general layout of equipment and approximate dimensions, unless a dimensional detail is included. The drawings do not show all architectural and structural details. Refer to the contract set of building drawings and check for any variations from the plans. Take any information requiring accurate dimensions from the building drawings on site.

30/06/23 DESIGN DEVELOPMENT B&A  
NO. DATE REVISION BY

**BROWN & ASSOCIATES**  
Engineers & Consultants, Limited

PROJECT: PROPOSED RENOVATIONS FOR UTILITIES REGULATION & COMPETITION AUTHORITY - FREDERICK HOUSE  
LOCATION: FREDERICK STREET, NASSAU, BAHAMAS.  
TITLES: CCTV & COMS RISERS  
SCALE: N.T.S.  
CLIENT: URCA

PROJECT ARCHITECT TDG	NUMBER PROJECT	DRAWING NO. E-6
DRAWN BY B&A		REF URCA
DATE OCT.12		



LEGEND	
▼	TELEPHONE
▽	DUAL DATA
TV	TV OUTLET
DL	DOOR LOCK
⌂	BUZZER
📷	CAMERA
Ⓚ	KEYPAD
Ⓜ	OCCUPANCY SENSOR
⊠	SECURITY ALARM

The drawings are diagrammatic and indicate general layout of equipment and approximate dimensions, unless a dimensional detail is included. The drawings do not show all architectural and structural details. Refer to the contract set of building drawings and check for any variations from the plans. Take any information requiring accurate dimensions from the building drawings on site.

30/06/23 DESIGN DEVELOPMENT B&A  
 NO. DATE REVISION BY

**BROWN & ASSOCIATES**  
 Engineers & Consultants, Limited

PROJECT  
 PROPOSED RENOVATIONS FOR  
 UTILITIES REGULATION & COMPETITION  
 AUTHORITY - FREDERICK HOUSE

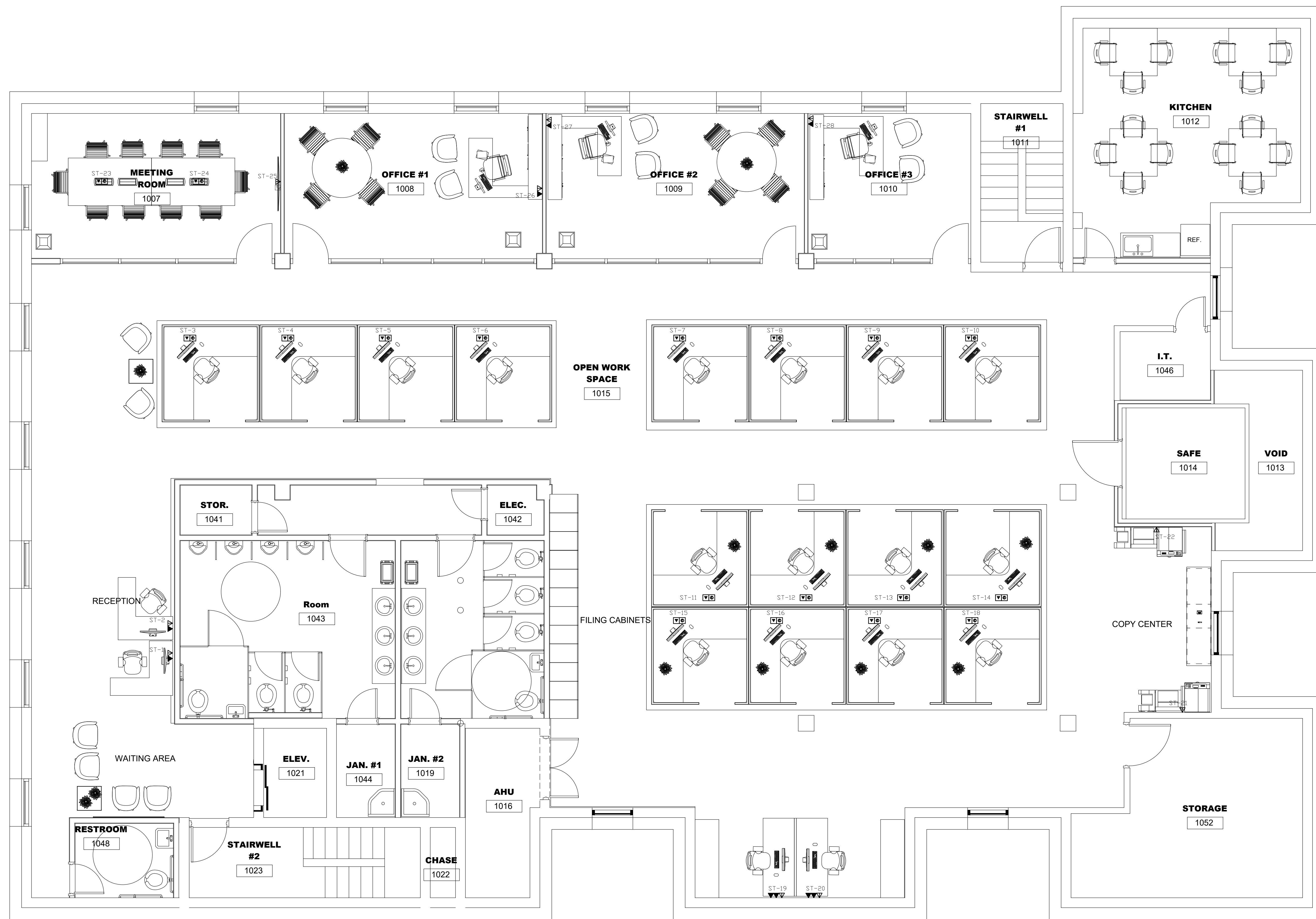
LOCATION  
 FREDERICK STREET, NASSAU, BAHAMAS.

TITLE  
 SECOND FLOOR COMM. LAYOUT

SCALE  
 1/4" = 1'-0"

CLIENT  
 URCA

PROJECT ARCHITECT	NUMBER	DRAWING NO.
TDG	PROJECT	E-7
DRAWN BY B&A		REF.
DATE OCT.12		URCA



LEGEND	
▼	TELEPHONE
▽	DUAL DATA
TV	TV OUTLET
DL	DOOR LOCK
⌂	BUZZER
📷	CAMERA
Ⓚ	KEYPAD
Ⓜ	OCCUPANCY SENSOR
☒	SECURITY ALARM

The drawings are diagrammatic and indicate general layout of equipment and approximate dimensions, unless a dimensional detail is included. The drawings do not show all architectural and structural details. Refer to the contract set of building drawings and check for any variations from the plans. Take any information requiring accurate dimensions from the building drawings on site.

30/06/23 DESIGN DEVELOPMENT B&A  
 NO. DATE REVISION BY

**BROWN & ASSOCIATES**  
 Engineers & Consultants, Limited

PROJECT  
 PROPOSED RENOVATIONS FOR  
 UTILITIES REGULATION & COMPETITION  
 AUTHORITY - FREDERICK HOUSE

LOCATION  
 FREDERICK STREET, NASSAU, BAHAMAS.

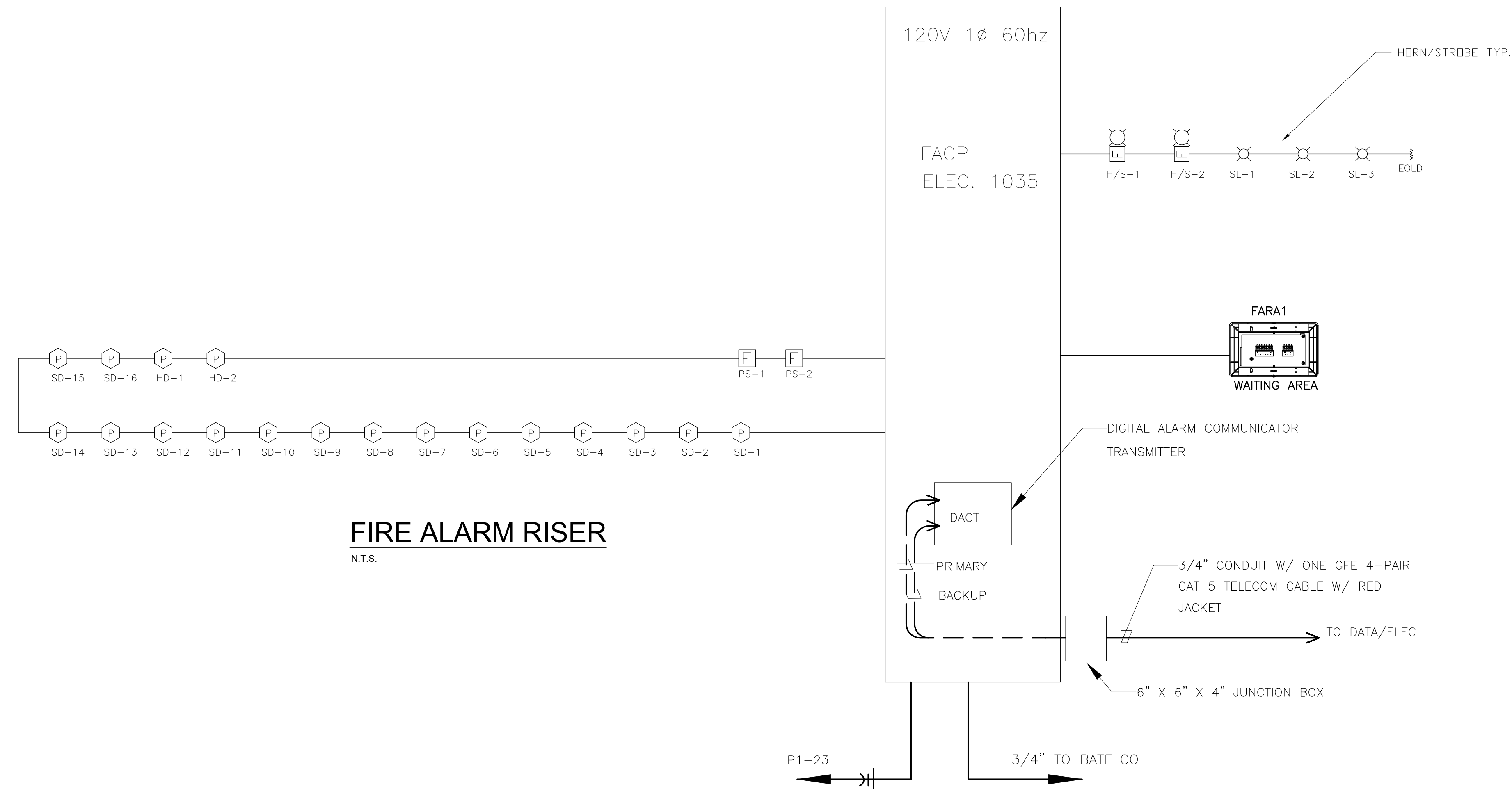
TITLE  
 THIRD FLOOR COMMS. LAYOUT

SCALE  
 1/4" = 1'-0"

CLIENT  
 URCA

PROJECT ARCHITECT	NUMBER	DRAWING NO.
TDG	PROJECT	E-8
DRAWN BY B&A		REF.
DATE OCT.12		URCA





**FIRE ALARM RISER**  
N.T.S.

SYSTEM INPUTS	SYSTEM OUTPUTS																
	A	B	C	D	E	F	G	H	I	J	K	L	M	N	O	P	Q
1. MANUAL FIRE ALARM STATION - SECOND FLOOR	•	•						•	•	•							
2. SECOND FLOOR AHU DUCT SMOKE DETECTOR	•	•															•
3. WATERFLOW - GROUND FLOOR	•	•															•
4. SPRINKLER CONTROL VALVE - GROUND FLOOR			•	•													
5. FIRE ALARM AC POWER FAILURE					•	•											
6. FIRE ALARM SYSTEM LOW BATTERY							•	•									
7. OPEN CIRCUIT									•								
8. GROUND FAULT										•							
9. NOTIFICATION APPLIANCE CIRCUIT SHORT											•						
10. DACT TRANSMISSION CHANNEL FAILURE												•					

**FIRE ALARM SYSTEM INPUT/OUTPUT MATRIX**

The drawings are schematic and indicate general layout of equipment and approximate dimensions, unless a dimensional detail is included. The drawings do not show all architectural and structural details. Refer to the contract set of building drawings and check for any variations from the plans. Take any information requiring accurate dimensions from the building drawings on site.

30/06/23 DESIGN DEVELOPMENT B&A  
NO. DATE REVISION BY

**BROWN & ASSOCIATES**  
Engineers & Consultants, Limited

PROJECT  
PROPOSED RENOVATIONS FOR  
UTILITIES REGULATION & COMPETITION  
AUTHORITY - FREDERICK HOUSE

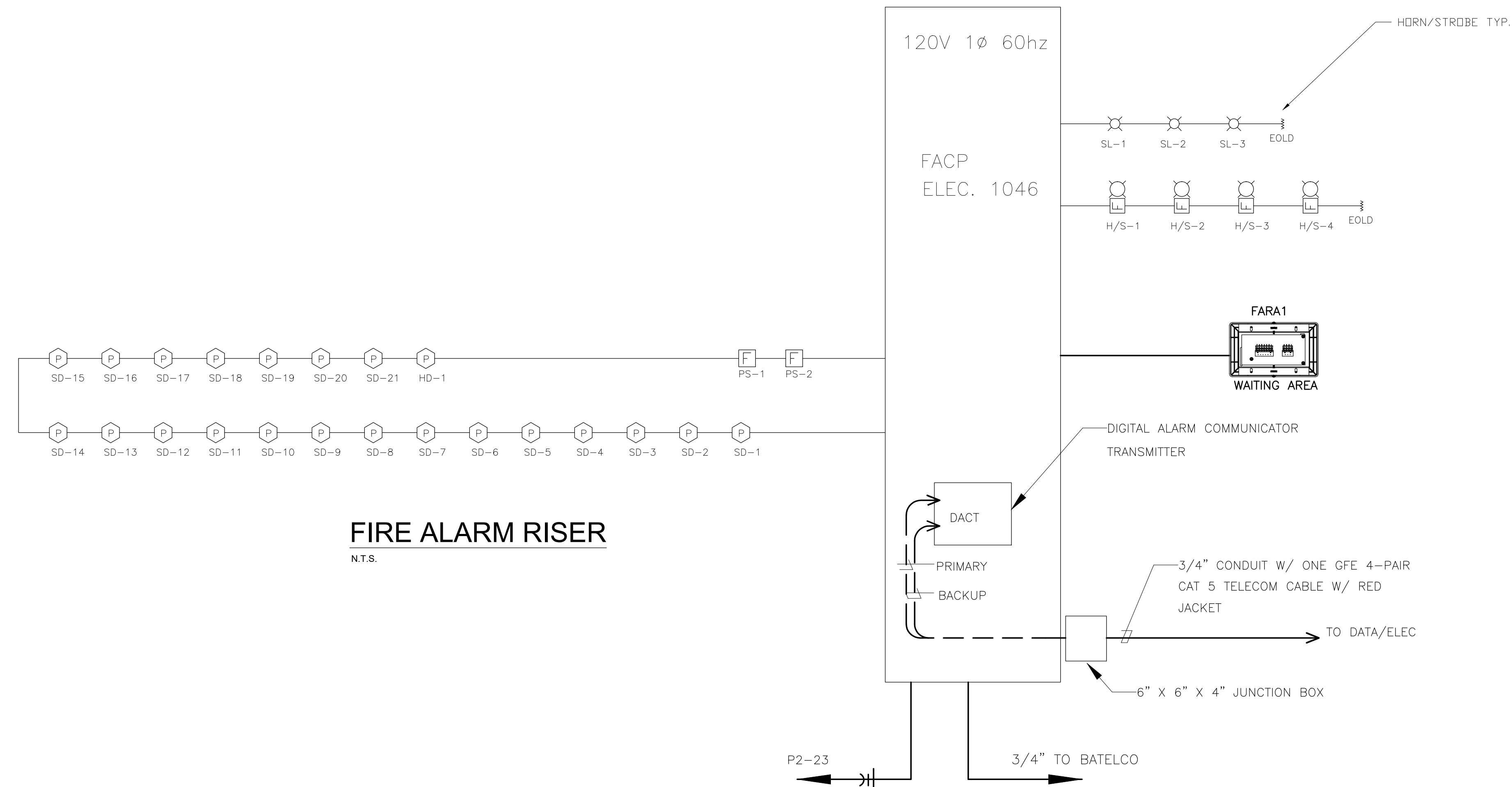
LOCATION  
FREDERICK STREET, NASSAU, BAHAMAS.

TITLE  
FIRE ALARM RISERS

SCALE  
N.T.S.

CLIENT  
URCA

PROJECT ARCHITECT TDG	NUMBER PROJECT	DRAWING NO. E-9
DRAWN BY B&A		REF URCA
DATE OCT.12		



**FIRE ALARM RISER**  
N.T.S.

SYSTEM INPUTS	SYSTEM OUTPUTS																
	A	B	C	D	E	F	G	H	I	J	K	L	M	N	O	P	Q
1. MANUAL FIRE ALARM STATION - SECOND FLOOR	•	•						•	•	•							
2. SECOND FLOOR AHU DUCT SMOKE DETECTOR	•	•															•
3. WATERFLOW - GROUND FLOOR	•	•										•					•
4. SPRINKLER CONTROL VALVE - GROUND FLOOR			•	•	•	•				•							
5. FIRE ALARM AC POWER FAILURE			•	•	•	•					•						
6. FIRE ALARM SYSTEM LOW BATTERY							•	•	•								
7. OPEN CIRCUIT							•	•	•								
8. GROUND FAULT							•	•	•								
9. NOTIFICATION APPLIANCE CIRCUIT SHORT							•	•	•								
10. DACT TRANSMISSION CHANNEL FAILURE							•	•	•								

FIRE ALARM SYSTEM INPUT/OUTPUT MATRIX

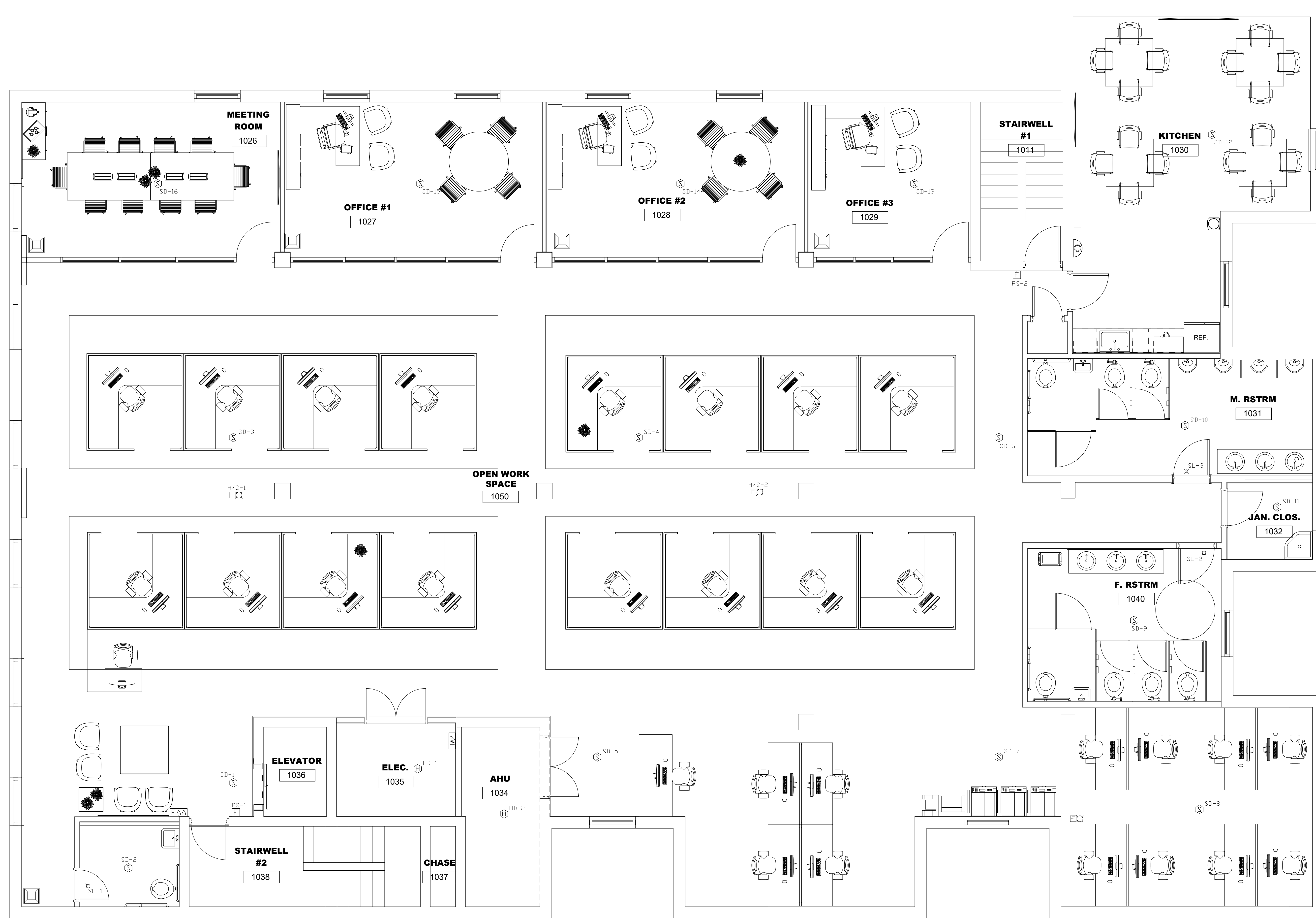
The drawings are schematic and indicate general layout of equipment and approximate dimensions, unless a dimensional detail is included. The drawings do not show all architectural and structural details. Refer to the contract set of building drawings and check for any variations from the plans. Take any information regarding accurate dimensions from the building drawings on site.

30/06/23 DESIGN DEVELOPMENT B&A  
NO. DATE REVISION BY

**BROWN & ASSOCIATES**  
Engineers & Consultants, Limited

PROJECT: PROPOSED RENOVATIONS FOR UTILITIES REGULATION & COMPETITION AUTHORITY - FREDERICK HOUSE  
LOCATION: FREDERICK STREET, NASSAU, BAHAMAS.  
TITLES: FIRE ALARM RISERS  
SCALE: N.T.S.  
CLIENT: URCA

PROJECT ARCHITECT TDG	NUMBER PROJECT	DRAWING NO. E-10
DRAWN BY B&A		REF URCA
DATE OCT.12		



LEGEND	
F	FIRE PULL STATION
S	SMOKE DETECTOR
SD	HEAT DETECTOR
SL	STROBE LIGHT
FH	HORN STROBE
FAA	REMOTE ANNUNCIATOR
FAP	FIRE ALARM PANEL

NOTES	
1.	CONTRACTOR TO COORDINATE WITH THE DEVELOPER BEFORE CONSTRUCTION COMMENCES TO CONFIRM HOW TO INTEGRATE TENANTS FIRE ALARM SYSTEM.
2.	DEVICES TO MATCH EXISTING SYSTEM SPECIFICATION.

The drawings are diagrammatic and indicate general layout of equipment and approximate dimensions, unless a dimensional detail is included. The drawings do not show all architectural and structural details. Refer to the contract set of building drawings and check for any variations from the plans. Take any information requiring accurate dimensions from the building drawings on site.

30/06/23 DESIGN DEVELOPMENT B&A  
 NO. DATE REVISION

**BROWN & ASSOCIATES**  
 Engineers & Consultants, Limited

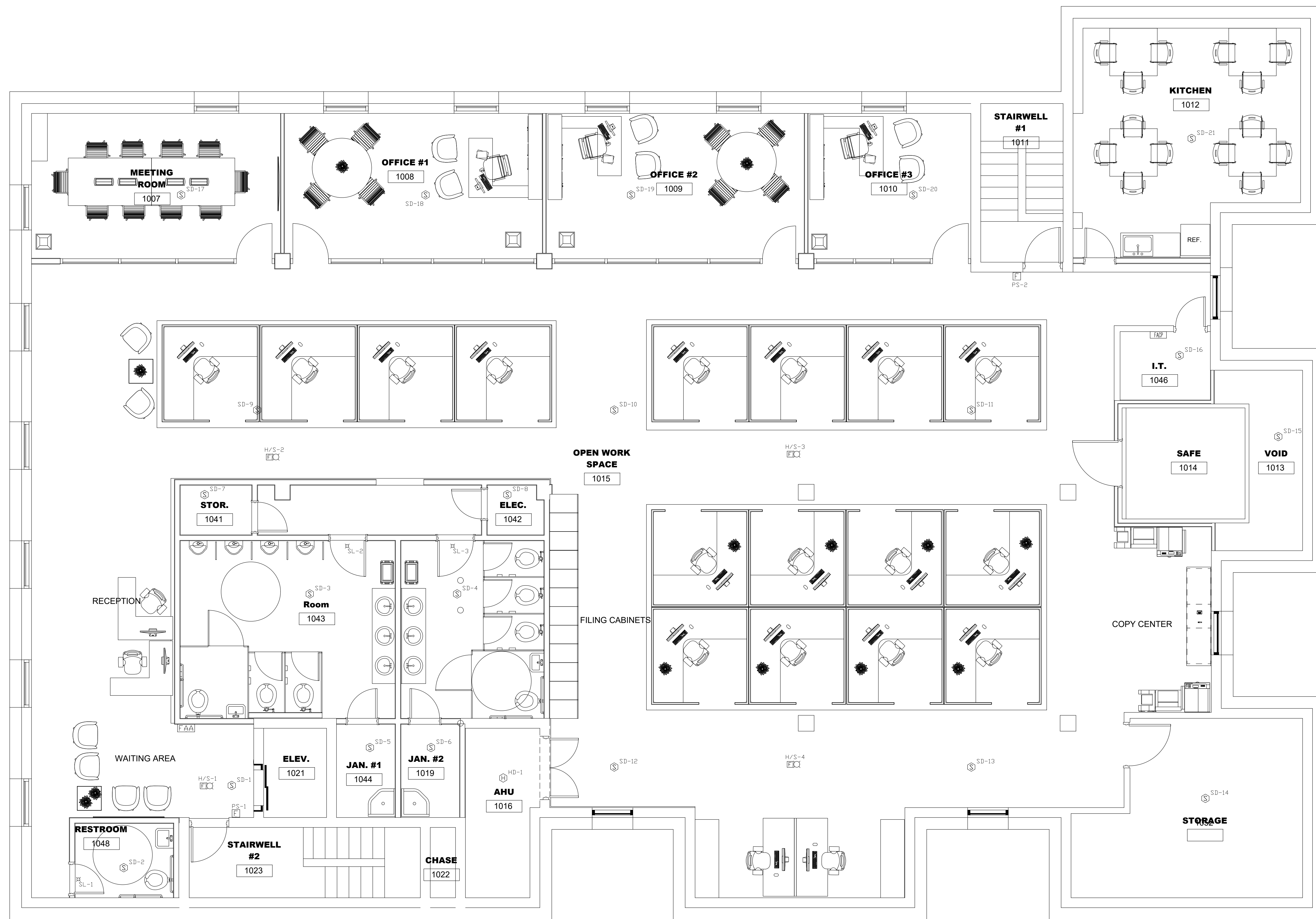
PROJECT  
 PROPOSED RENOVATIONS FOR  
 UTILITIES REGULATION & COMPETITION  
 AUTHORITY - FREDERICK HOUSE

LOCATION  
 FREDERICK STREET, NASSAU, BAHAMAS.

TITLE  
 THIRD FLOOR FIRE ALARM LAYOUT  
 SCALE 1/4" = 1'-0"

CLIENT  
 URCA

PROJECT ARCHITECT	NUMBER	DRAWING NO.
TDG	PROJECT	E-11
DRAWN BY B&A		REF URCA
DATE OCT.12		



LEGEND	
F	FIRE PULL STATION
SD	SMOKE DETECTOR
S	HEAT DETECTOR
SL	STROBE LIGHT
FSL	HORN STROBE
FAA	REMOTE ANNUNCIATOR
FAP	FIRE ALARM PANEL

NOTES	
1.	CONTRACTOR TO COORDINATE WITH THE DEVELOPER BEFORE CONSTRUCTION COMMENCES TO CONFIRM HOW TO INTEGRATE TENANTS FIRE ALARM SYSTEM.
2.	DEVICES TO MATCH EXISTING SYSTEM SPECIFICATION.

30/06/23 DESIGN DEVELOPMENT B&A  
 NO. DATE REVISION BY

**BROWN & ASSOCIATES**  
 Engineers & Consultants, Limited

PROJECT: PROPOSED RENOVATIONS FOR UTILITIES REGULATION & COMPETITION AUTHORITY - FREDERICK HOUSE  
 LOCATION: FREDERICK STREET, NASSAU, BAHAMAS.  
 TITLES: THIRD FLOOR FIRE ALARM LAYOUT  
 SCALE: 1/4" = 1'-0"  
 CLIENT: URCA

PROJECT ARCHITECT	NUMBER	DRAWING NO.
TDG	PROJECT	E-12
DRAWN BY: B&A		REF: URCA
DATE: OCT.12		

The drawings are diagrammatic and indicate general layout of equipment and approximate dimensions, unless a dimensional detail is included. The drawings do not show all architectural and structural details. Refer to the contract set of building drawings and check for any variations from the plans. Take any information requiring accurate dimensions from the building drawings on site.