

URCA RENOVATIONS

Enter Address

JOB NO: DG - 2714-02-22

CURRENT SUBMISSION

100% CONSTRUCTION DOCS.

DATE

August 16th, 2022

CONSULTANTS

OWNER

URCA

06/13/2015

CURRENT SUBMISSION:

No.	Description	Date
1	DESIGN DEVELOPMENT	
2	50% CONSTRUCTION DOCUMENTS	
3	100% CONSTRUCTION DOCUMENTS	

URCA RENOVATIONS

Enter Address

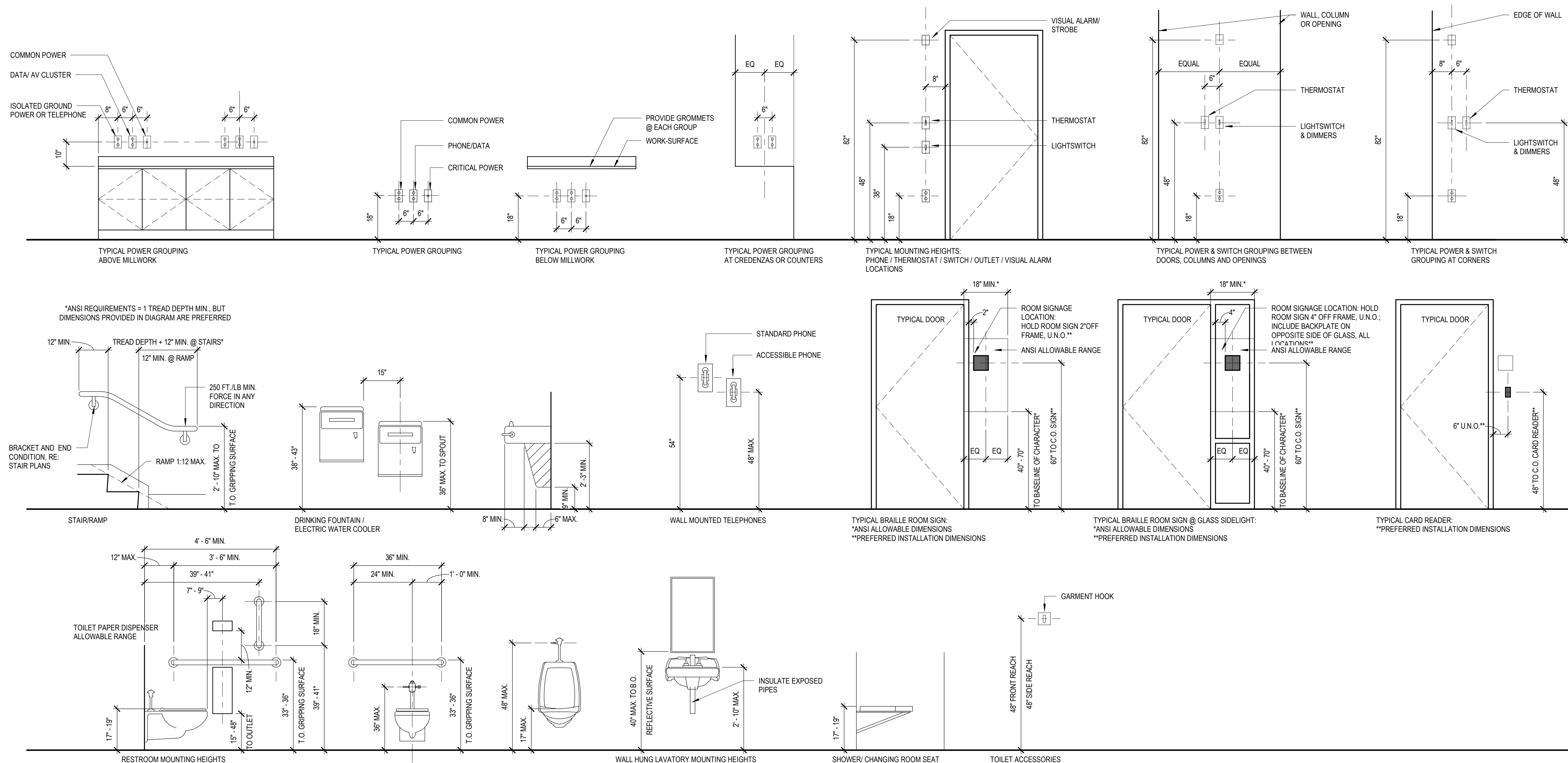
COVER

Author

DG -
2714-02-22 A0.00

SCALE

TYPICAL MOUNTING HEIGHT LEGEND



TYPICAL MOUNTING HEIGHTS

1/2" = 1'-0"

06/13/2015

CURRENT SUBMISSION:		
No.	Description	Date
1	DESIGN DEVELOPMENT	
2	50% CONSTRUCTION DOCUMENTS	
3	100% CONSTRUCTION DOCUMENTS	

URCA RENOVATIONS

TYPICAL MOUNTING HEIGHTS

PROJECT SCALE: AS SPECIFIED



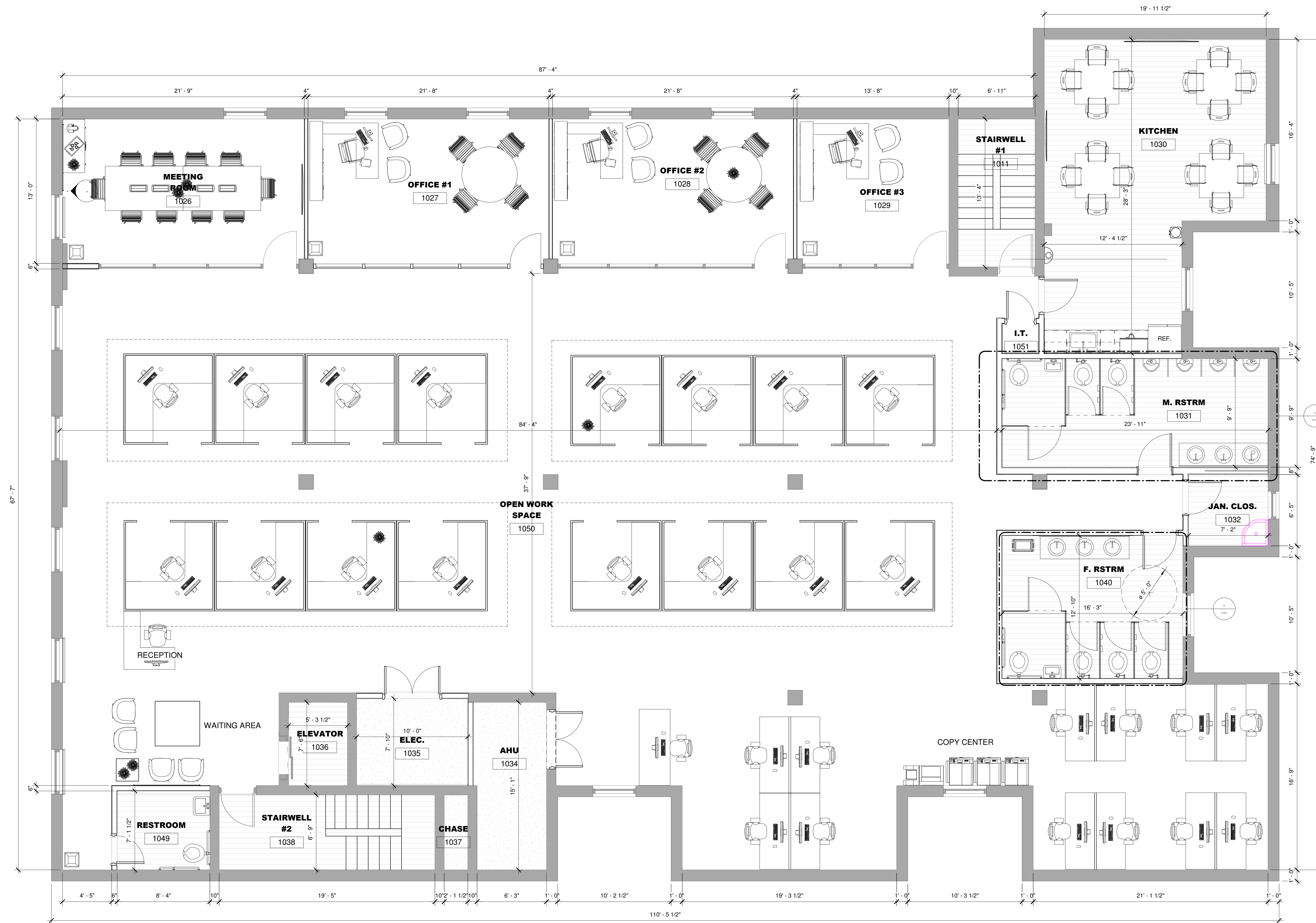
TDG ARCHITECTS



#84 Zabidi House
Bethel Highway South
Nassau, Bahamas
242-322-1251
242-322-1298



#12 Buren Retiro Road
Nassau, Bahamas
242-325-1112
242-325-1158



1 SECOND FLOOR PROPOSED FLOOR PLAN
A1.01 1/4" = 1'-0"

SQUARE FOOTAGE	
Name	Area
Second Floor	7,095 SF

06/13/2015

CURRENT SUBMISSION:

No.	Description	Date
1	DESIGN DEVELOPMENT	
2	50% CONSTRUCTION DOCUMENTS	
3	100% CONSTRUCTION DOCUMENTS	

URCA RENOVATIONS

SECOND FLOOR PROPOSED FLOOR PLAN

PROJECT SCALE: AS SPECIFIED



1 THIRD FLOOR PROPOSED FLOOR PLAN
A1.02 1/4" = 1'-0"

SQUARE FOOTAGE	
Name	Area
Third Floor	6,755 SF

06/13/2015

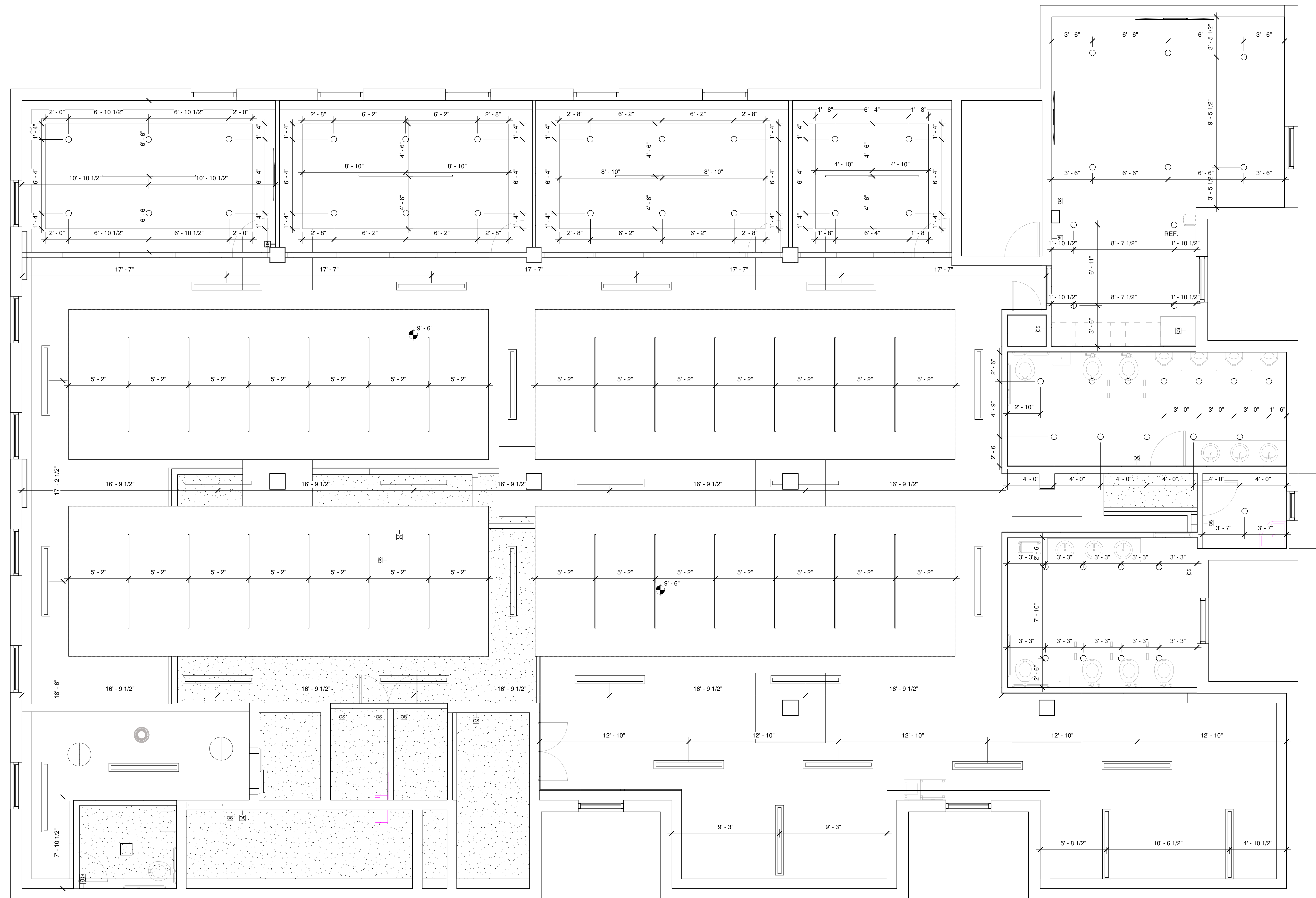
CURRENT SUBMISSION:

No.	Description	Date
1	DESIGN DEVELOPMENT	
2	50% CONSTRUCTION DOCUMENTS	
3	100% CONSTRUCTION DOCUMENTS	

URCA RENOVATIONS

THIRD FLOOR PROPOSED FLOOR PLAN

PROJECT SCALE: AS SPECIFIED



RCP LEGEND

	GYPSUM BOARD
	COLUMN
	RECESSED LINEAR LIGHT
	SUSPENDED LINEAR LIGHT
	EXHAUST FAN
	RECESSED CANS

**SECOND FLOOR PROPOSED REFLECTED
CEILING PLAN**
A1.03 1/4" = 1'-0"

06/13/2015

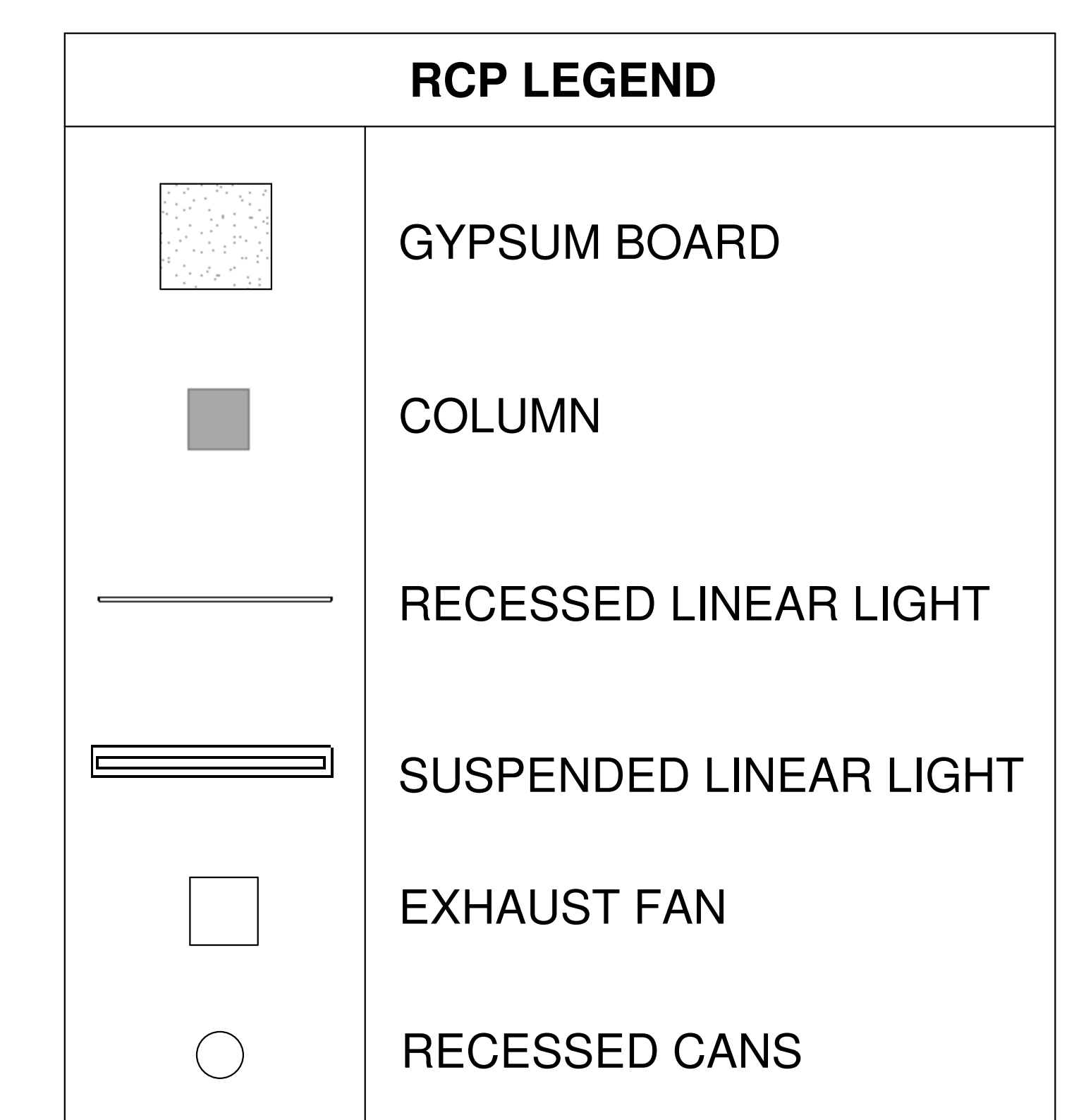
CURRENT SUBMISSION:

No.	Description	Date
1	DESIGN DEVELOPMENT	
2	50% CONSTRUCTION DOCUMENTS	
3	100% CONSTRUCTION DOCUMENTS	

**URCA
RENOVATIONS**

**SECOND FLOOR
PROPOSED RCP**

PROJECT SCALE: AS SPECIFIED



THIRD FLOOR PROPOSED REFLECTED CEILING PLAN

1
A1.04 1/4" = 1'-0"

06/13/2015

CURRENT SUBMISSION:

No.	Description	Date
1	DESIGN DEVELOPMENT	
2	50% CONSTRUCTION DOCUMENTS	
3	100% CONSTRUCTION DOCUMENTS	

URCA RENOVATIONS

THIRD FLOOR PROPOSED RCP

PROJECT SCALE: AS SPECIFIED



TDG

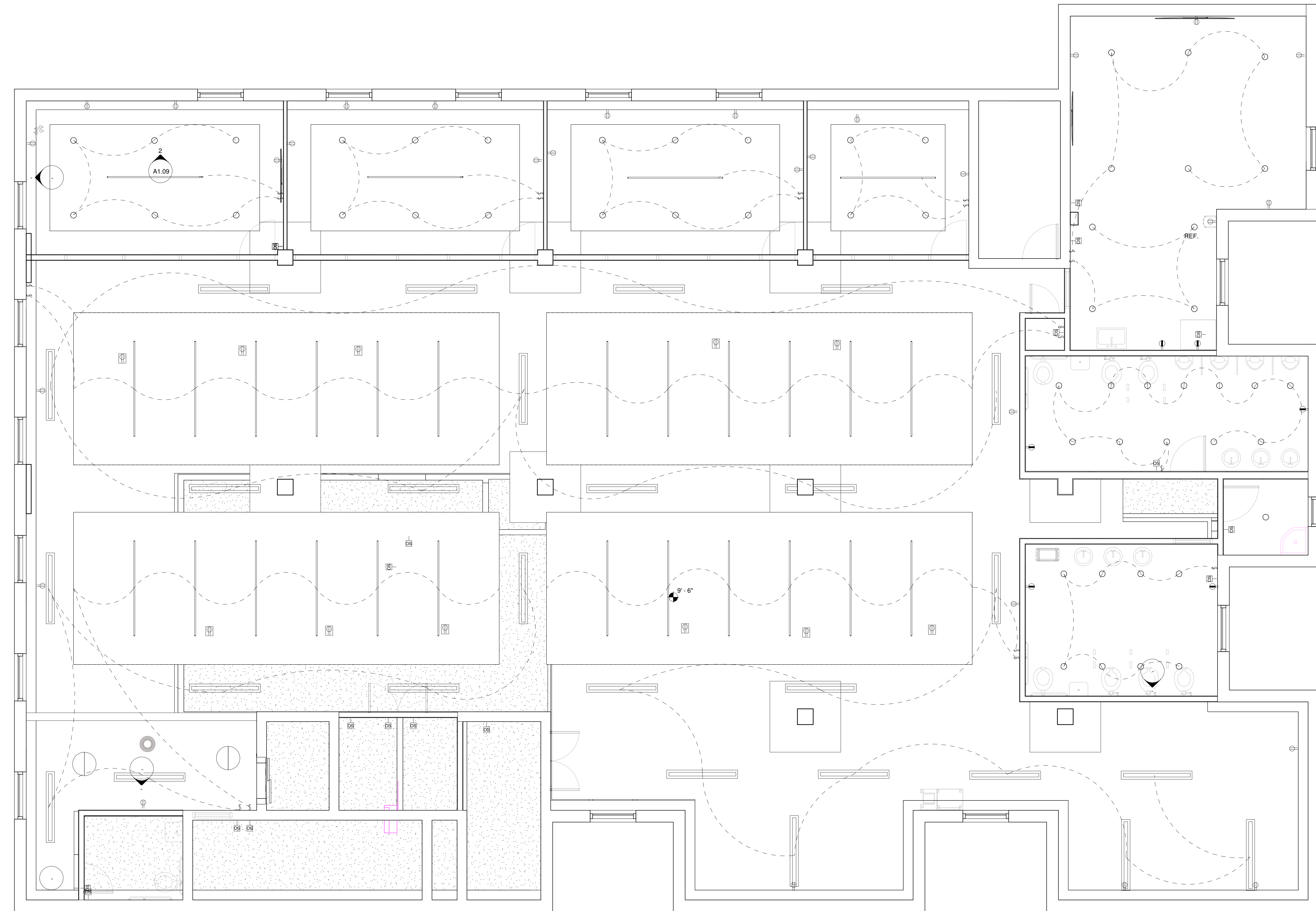
ARCHITECTS



#64 Zablaf House
Bethel Highway South
Nassau, Bahamas
242-322-1251
242-322-1298



#12 Buren Retro Road
Nassau, Bahamas
242-325-1112
242-325-1158



ELECTRICAL LEGEND	
Ⓛ	LIGHT SWITCH
Ⓧ	DUPLEX OUTLET
Ⓧ	DUPLEX FLOOR OUTLET
Ⓧ	GROUND FAULT CIRCUIT INTERRUPTER OUTLET (GFCI)

RCP LEGEND	
	GYPSUM BOARD
	COLUMN
	RECESSED LINEAR LIGHT
	SUSPENDED LINEAR LIGHT
	EXHAUST FAN
	RECESSED CANS

1 SECOND FLOOR PROPOSED LIGHTING PLAN
A1.05 1/4" = 1'-0"

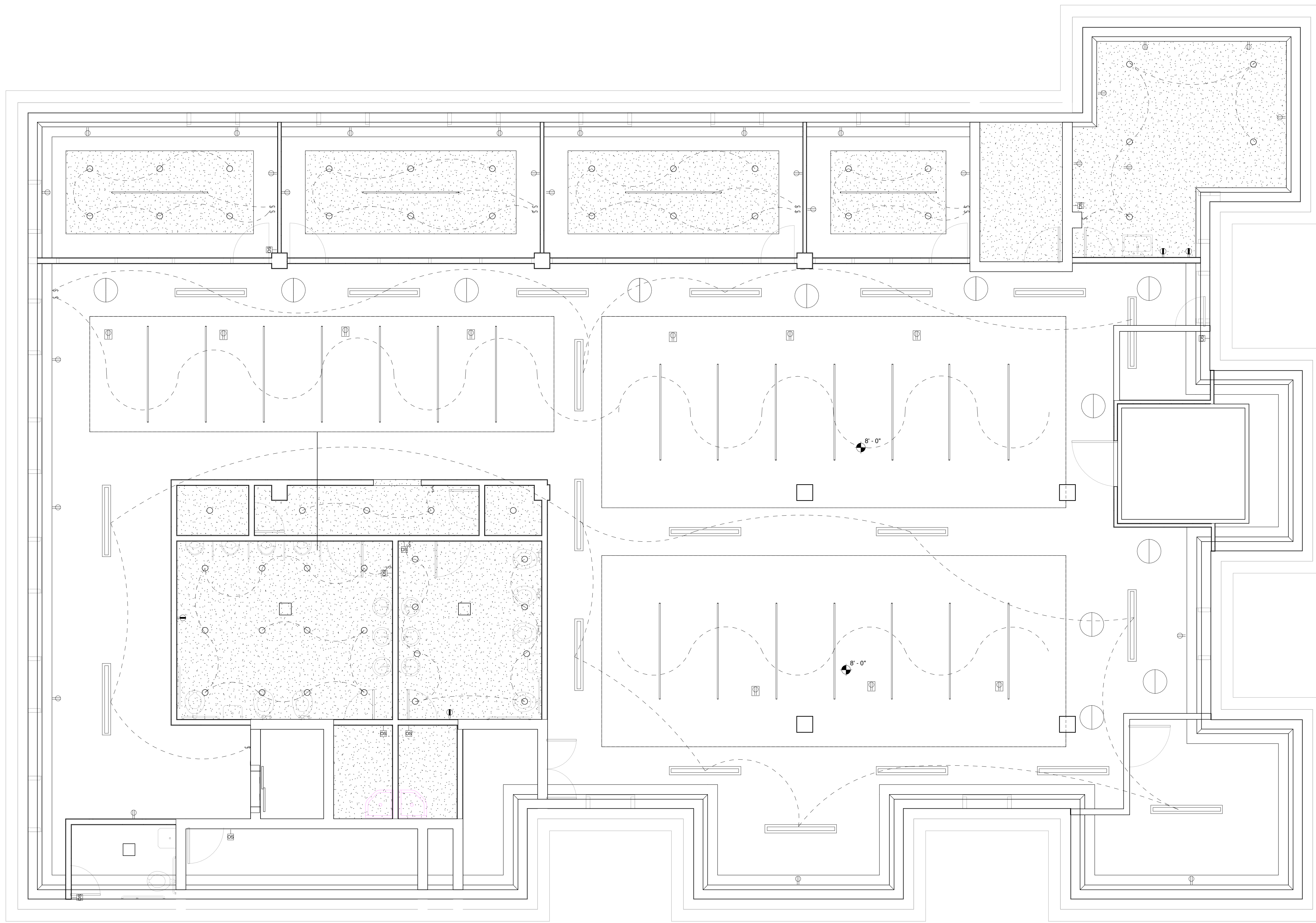
CURRENT SUBMISSION:		
No.	Description	Date
1	DESIGN DEVELOPMENT	
2	50% CONSTRUCTION DOCUMENTS	
3	100% CONSTRUCTION DOCUMENTS	

URCA RENOVATIONS

SECOND FLOOR PROPOSED LIGHTING PLAN

PROJECT SCALE: AS SPECIFIED

DG - 2714-02-22 A1.05
JOB NO. SHEET



ELECTRICAL LEGEND	
Ⓢ	LIGHT SWITCH
Ⓞ	DUPLEX OUTLET
Ⓜ	DUPLEX FLOOR OUTLET
Ⓡ	GROUND FAULT CIRCUIT INTERUPTER OUTLET (GFCI)

RCP LEGEND	
▨	GYPSUM BOARD
■	COLUMN
—	RECESSED LINEAR LIGHT
══	SUSPENDED LINEAR LIGHT
□	EXHAUST FAN
○	RECESSED CANS

1 THIRD FLOOR PROPOSED LIGHTING PLAN
A1.06 1/4" = 1'-0"

06/13/2015

CURRENT SUBMISSION:

No.	Description	Date
1	DESIGN DEVELOPMENT	
2	50% CONSTRUCTION DOCUMENTS	
3	100% CONSTRUCTION DOCUMENTS	

URCA RENOVATIONS

THIRD FLOOR PROPOSED LIGHTING PLAN

PROJECT SCALE: AS SPECIFIED



TDG

ARCHITECTS

#84 Zabelle House
Bethel Highway South
Nassau, Bahamas
242-322-1251
242-322-1298




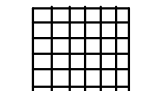
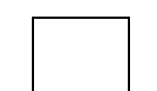
#12 Buren Retro Road
Nassau, Bahamas
242-325-1112
242-325-1158



SECOND FLOOR PROPOSED FINISHED FLOOR PLAN

1
A1.07 1/4" = 1'-0"

FLOOR FINISH LEGEND

-  PORCELAIN TILE
-  CARPET TILE
-  POLISHED CONCRETE

06/13/2015

CURRENT SUBMISSION:

No.	Description	Date
1	DESIGN DEVELOPMENT	
2	50% CONSTRUCTION DOCUMENTS	
3	100% CONSTRUCTION DOCUMENTS	

URCA RENOVATIONS

SECOND FLOOR FINISHED FLOOR PLAN

PROJECT SCALE: AS SPECIFIED



TDG
ARCHITECTS

#84 Zafkel House
Bethel Highway South
Nassau, Bahamas
242-322-1251
242-322-1298

#12 Buren Retiro Road
Nassau, Bahamas
242-325-1112
242-325-1158



THIRD FLOOR PROPOSED FINISHED FLOOR PLAN
A1.08 1/4" = 1'-0"

06/13/2015

CURRENT SUBMISSION:

No.	Description	Date
1	DESIGN DEVELOPMENT	
2	50% CONSTRUCTION DOCUMENTS	
3	100% CONSTRUCTION DOCUMENTS	

URCA RENOVATIONS

THIRD FLOOR FINISHED FLOOR PLAN

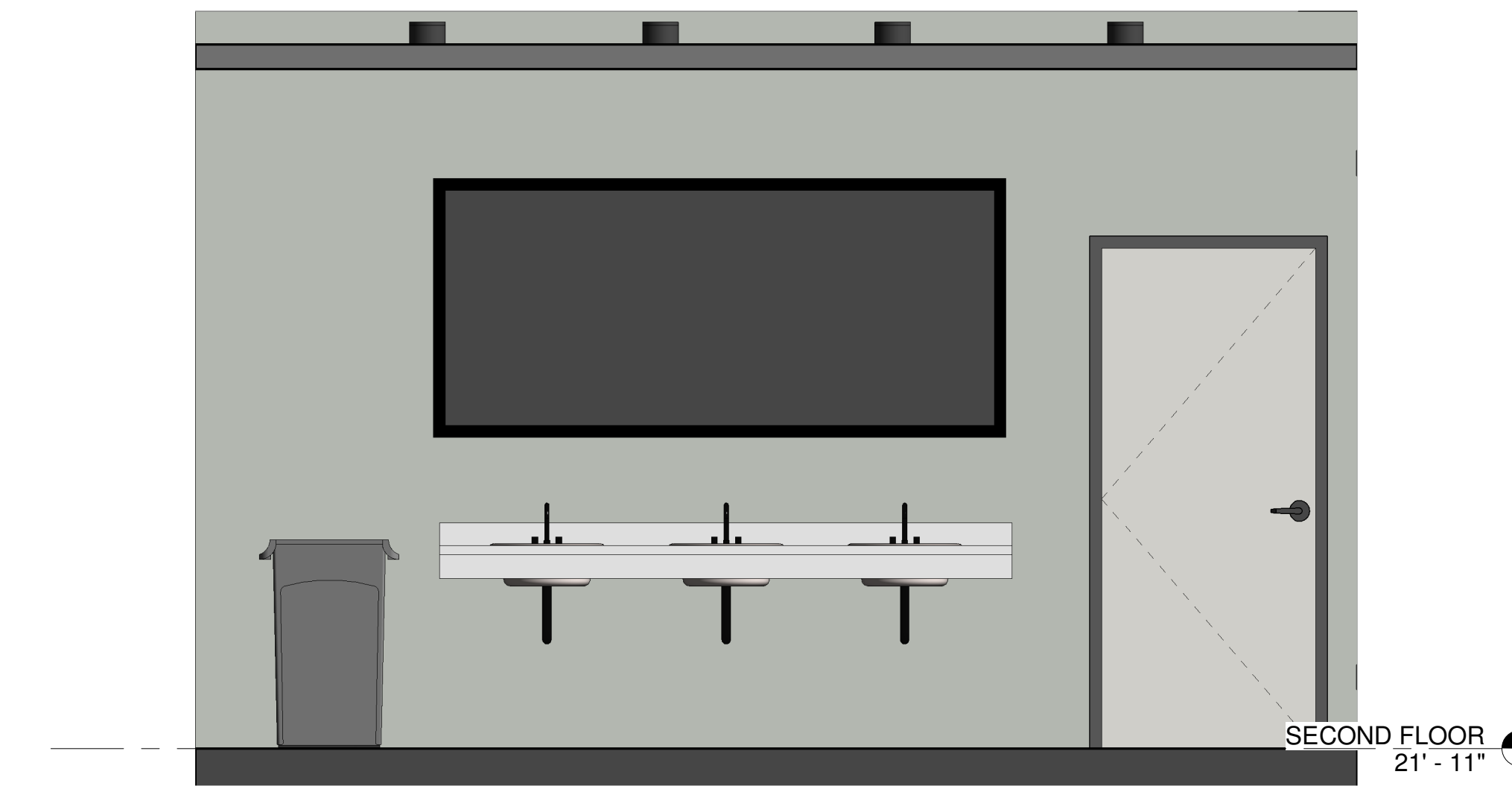
PROJECT SCALE: AS SPECIFIED

DG - 2714-02-22 A1.08
JOB NO. SHEET

FLOOR FINISH LEGEND	
	PORCELAIN TILE
	CARPET TILE
	POLISHED CONCRETE



1 KITCHEN
A1.09 1/2" = 1'-0"



3 RESTROOM
A1.09 1/2" = 1'-0"



2 MEETING ROOM
A1.09 1/2" = 1'-0"



4 WAITING AREA
A1.09 1/2" = 1'-0"

06/13/2015

CURRENT SUBMISSION:

No.	Description	Date
1	DESIGN DEVELOPMENT	
2	50% CONSTRUCTION DOCUMENTS	
3	100% CONSTRUCTION DOCUMENTS	

URCA
RENOVATIONS

INTERIOR
ELEVATIONS

PROJECT SCALE: AS SPECIFIED

DG - 2714-02-22 A1.09
JOB NO. SHEET



TDG

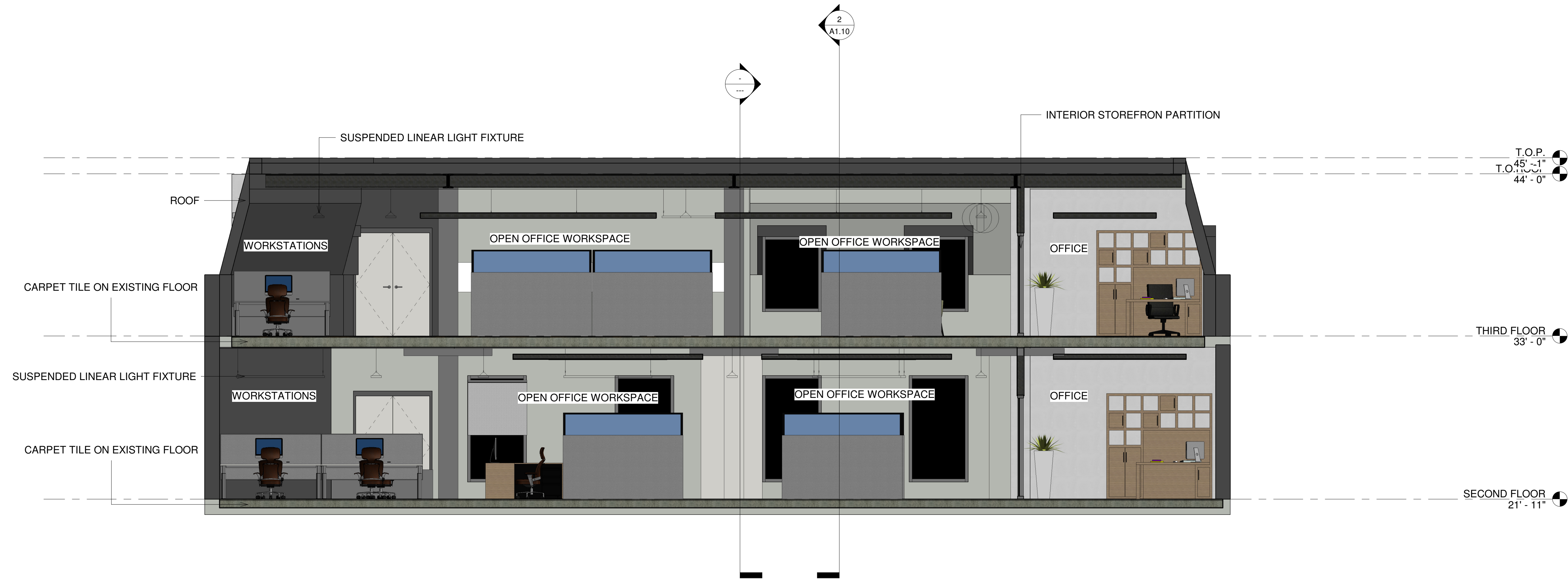
ARCHITECTS



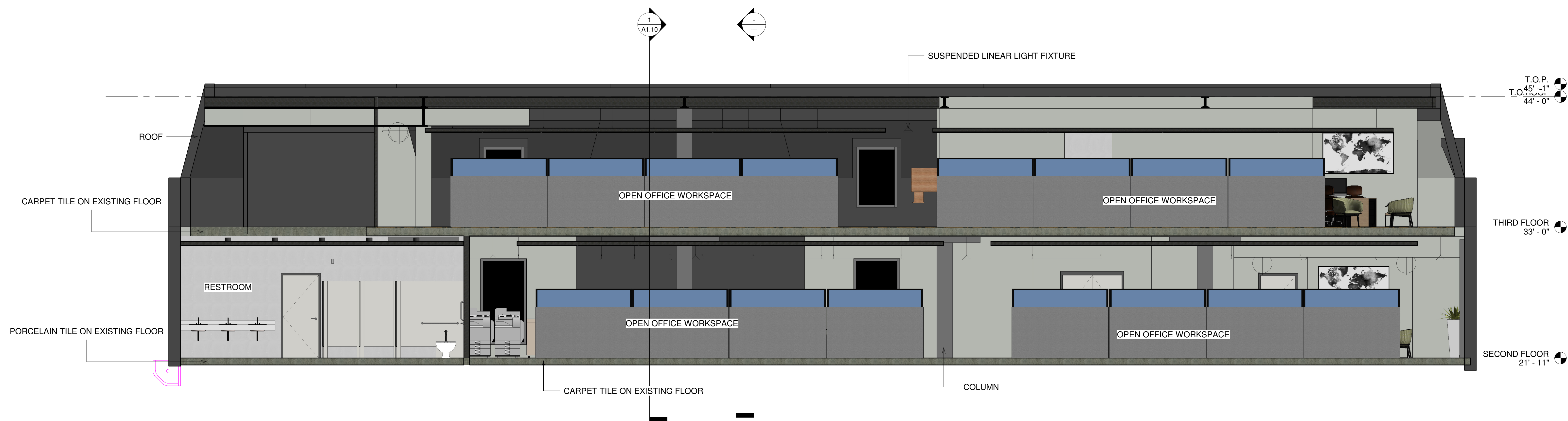
#64 Zabtai House
Bethel Highway South
Nassau, Bahamas
242-322-1251
242-322-1298



#12 Buren Retiro Road
Nassau, Bahamas
242-325-1112
242-325-1158



Section 3
A1.10 1/4" = 1'-0"



Section 4
A1.10 1/4" = 1'-0"

06/13/2015

CURRENT SUBMISSION:

No.	Description	Date
1	DESIGN DEVELOPMENT	
2	50% CONSTRUCTION DOCUMENTS	
3	100% CONSTRUCTION DOCUMENTS	

URCA RENOVATIONS

SECTIONS

PROJECT SCALE: AS SPECIFIED

DG - 2714-02-22 A1.10
JOB NO. SHEET



WAITING AREA



OPEN OFFICE WORKSPACE



OPEN OFFICE WORKSPACE



OFFICE



TDG

ARCHITECTS



#64 Zabihi House
Bethel Highway South
Nassau, Bahamas
242-322-1251
242-322-1298



#12 Buren Retiro Road
Nassau, Bahamas
242-325-1112
242-325-1158

06/13/2015

CURRENT SUBMISSION:

No.	Description	Date
1	DESIGN DEVELOPMENT	
2	50% CONSTRUCTION DOCUMENTS	
3	100% CONSTRUCTION DOCUMENTS	

**URCA
RENOVATIONS**

**INTERIOR
PERSPECTIVES**

PROJECT SCALE: AS SPECIFIED

DG -
2714-02-22
JOB NO.

A1.11
SHEET



RESTROOM



KITCHEN



WORKSTATIONS



KITCHEN

06/13/2015

CURRENT SUBMISSION:

No.	Description	Date
1	DESIGN DEVELOPMENT	
2	50% CONSTRUCTION DOCUMENTS	
3	100% CONSTRUCTION DOCUMENTS	

URCA RENOVATIONS

INTERIOR PERSPECTIVES

PROJECT SCALE: AS SPECIFIED



OPEN WORKSPACE/RECEPTION & WAITING



MEETING ROOM



OPEN WORKSPACE

06/13/2015

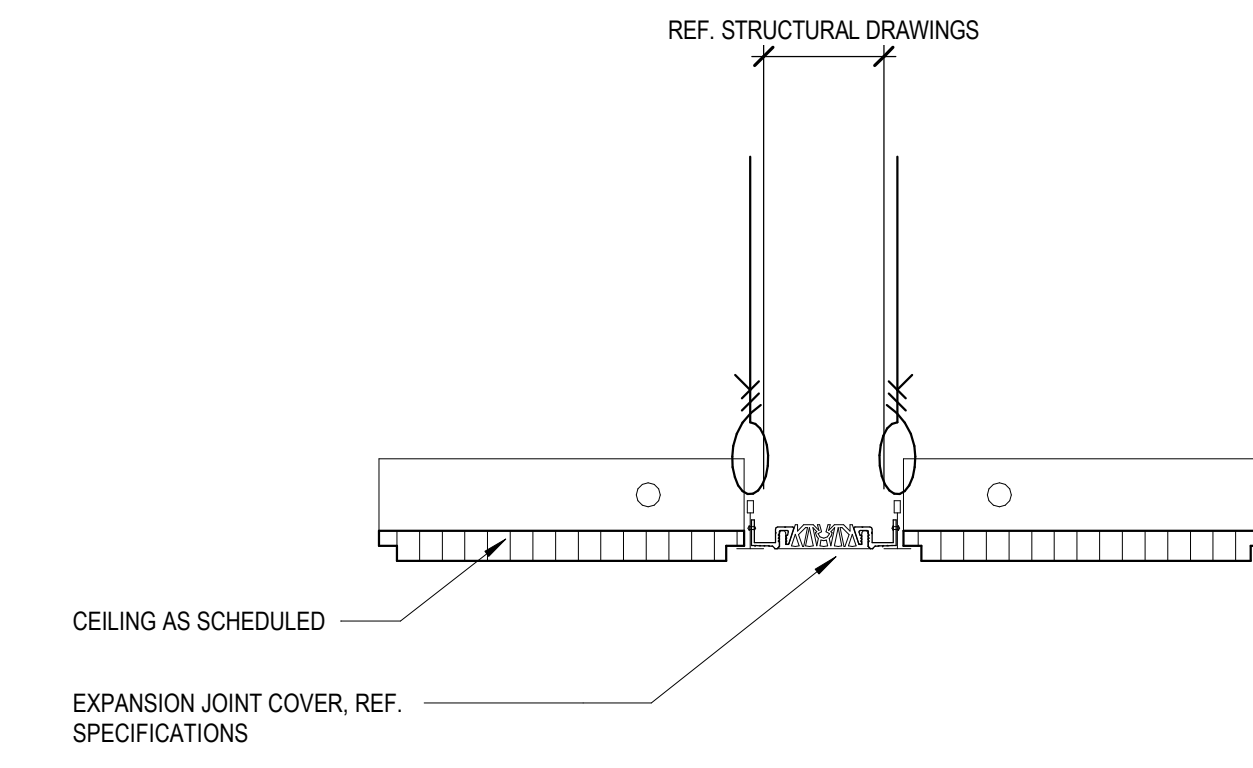
CURRENT SUBMISSION:

No.	Description	Date
1	DESIGN DEVELOPMENT	
2	50% CONSTRUCTION DOCUMENTS	
3	100% CONSTRUCTION DOCUMENTS	

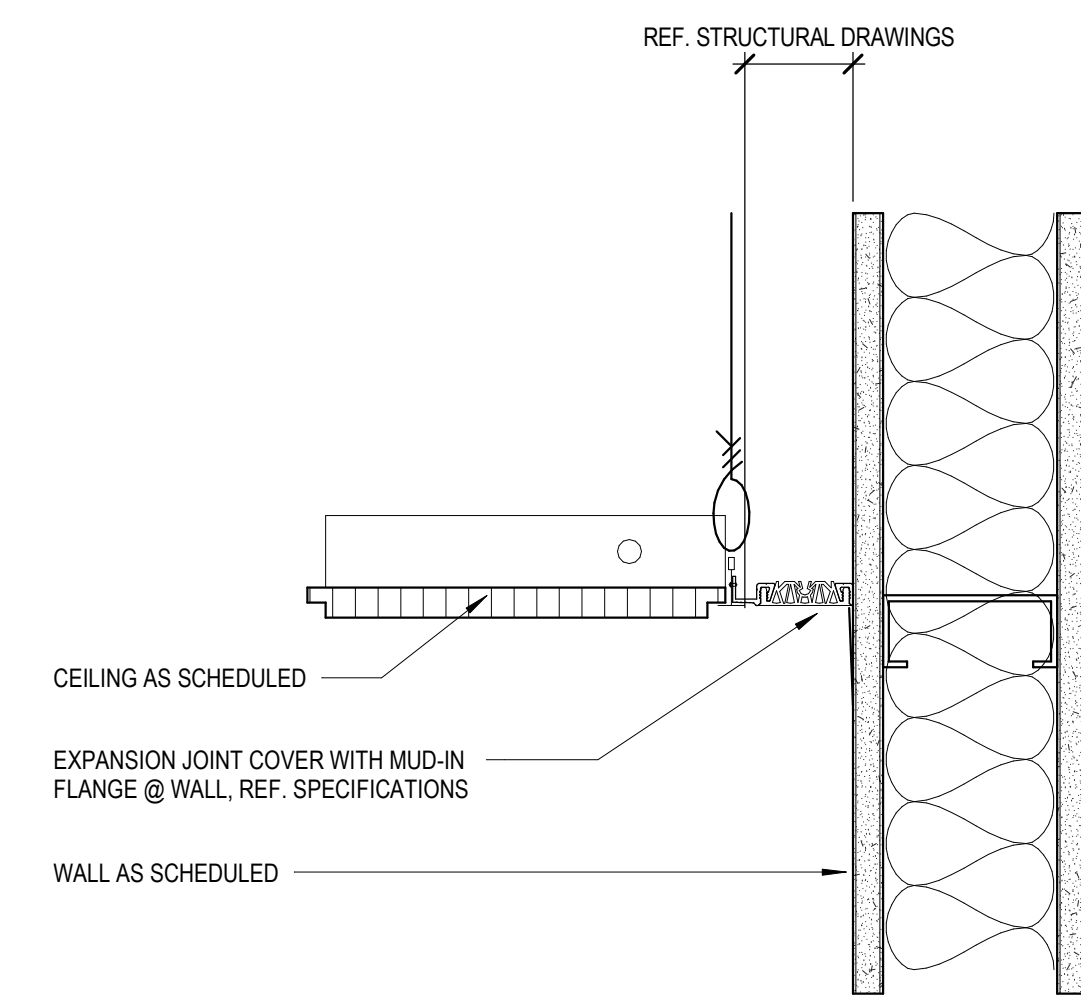
URCA
RENOVATIONS

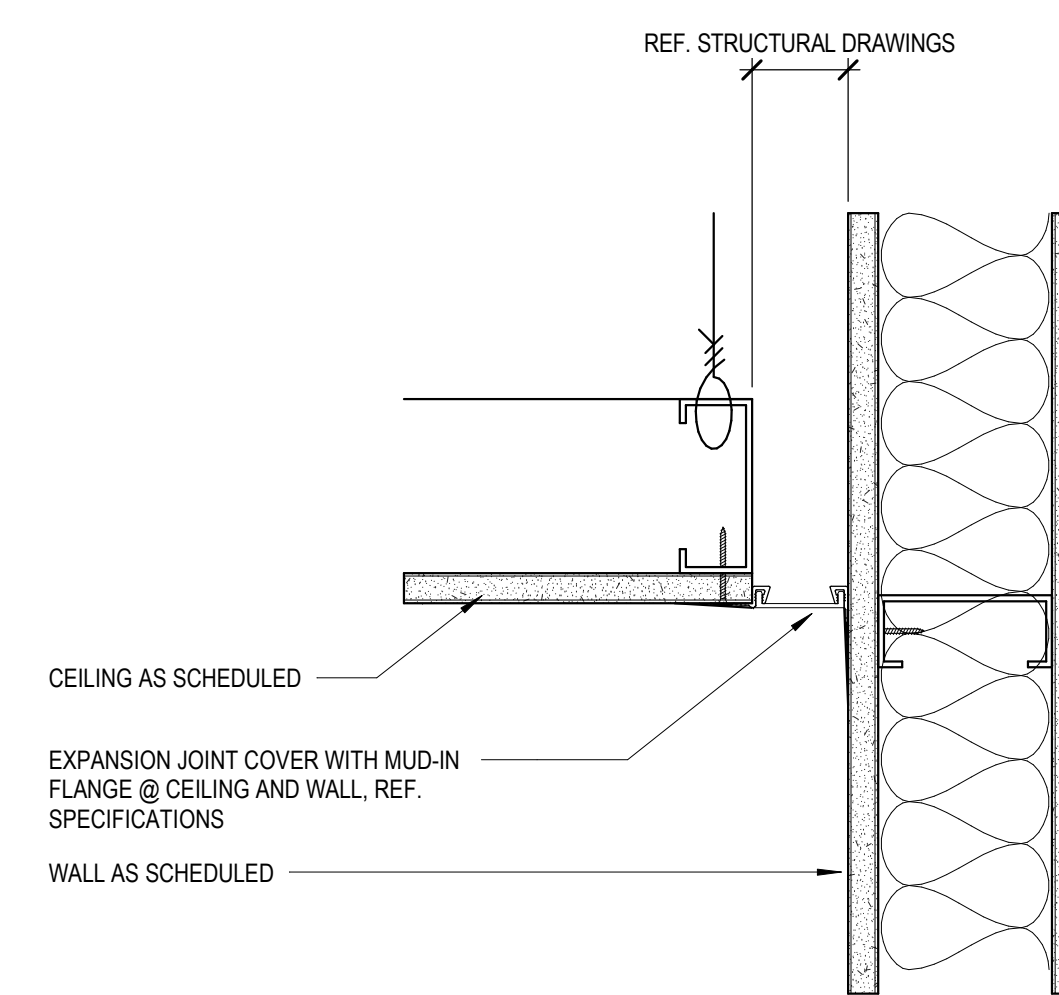
INTERIOR
PERSPECTIVES

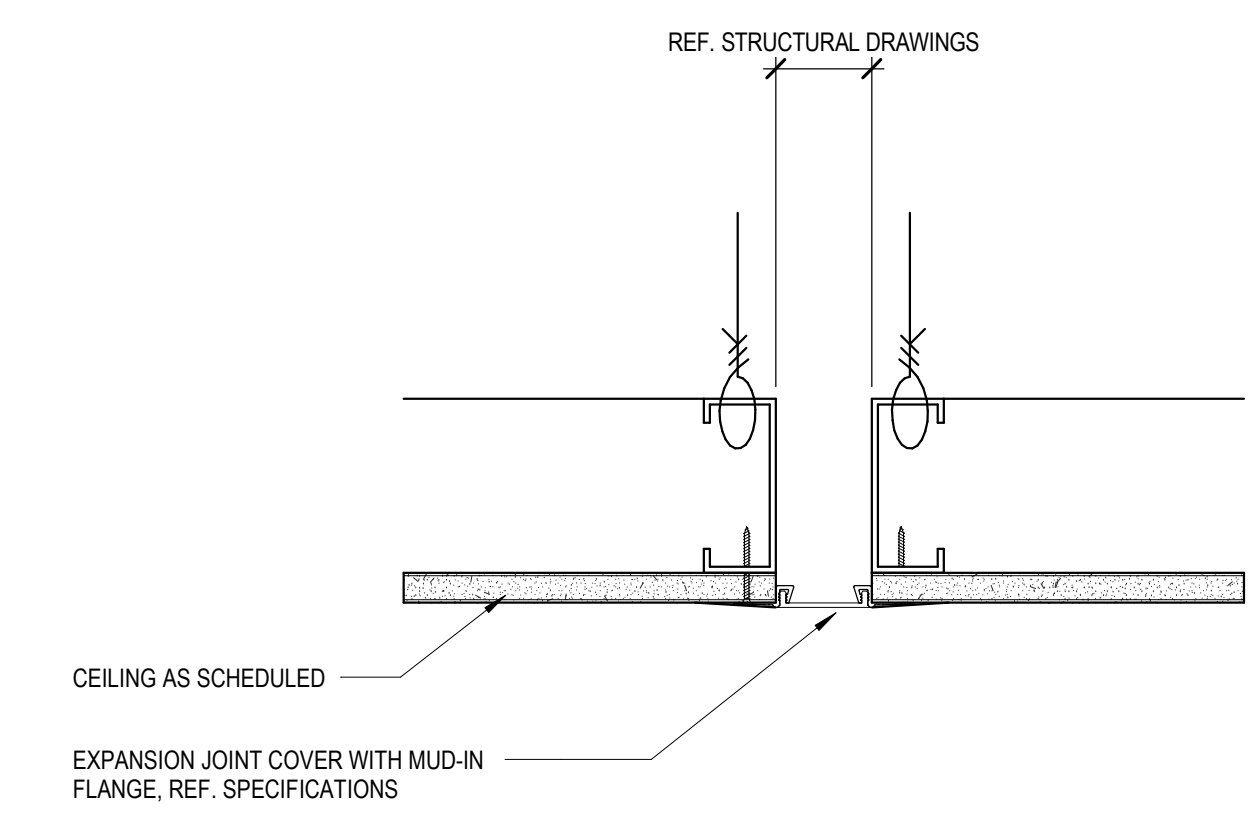
PROJECT SCALE: AS SPECIFIED



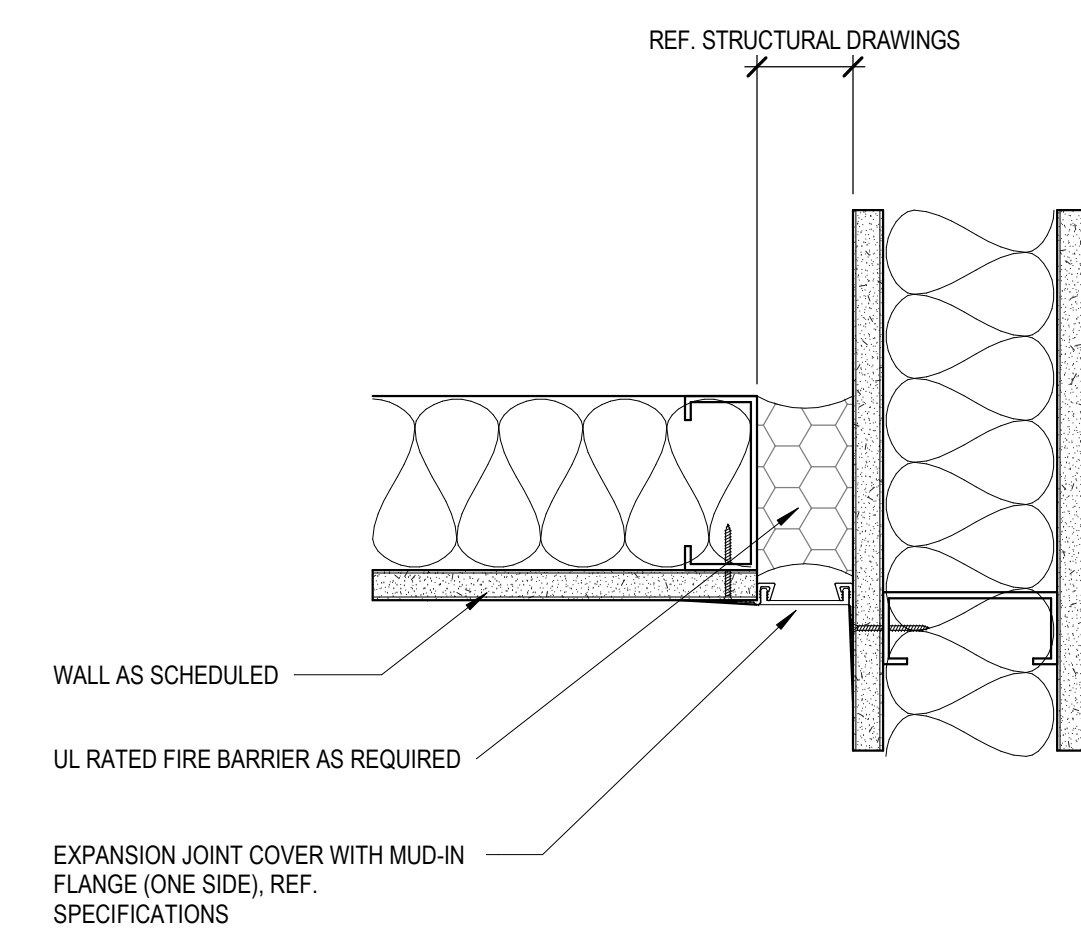
REF. REFLECTED CEILING PLANS FOR CEILING TYPES

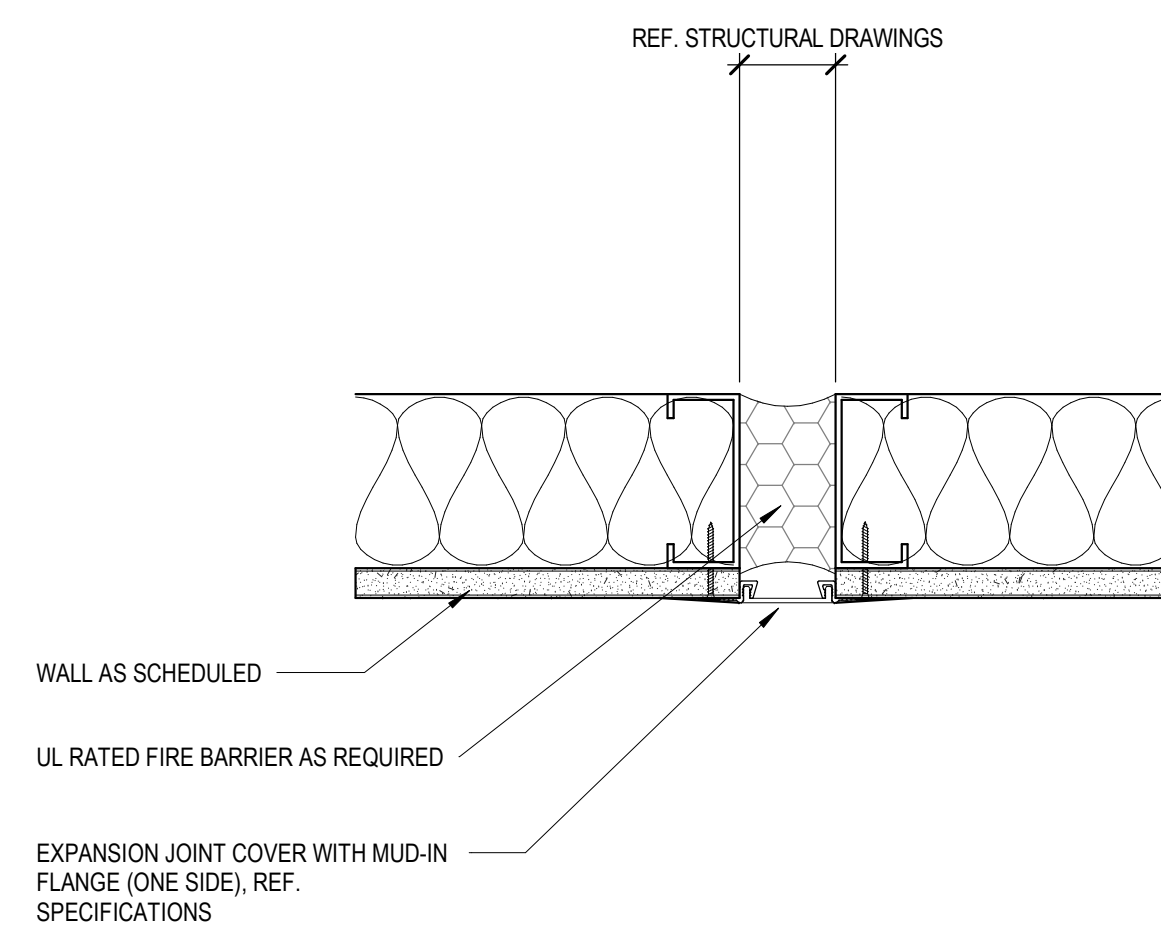
1 EXP. JT. @ CEILING TILE
A1.14 3" = 1'-0"

 REF. REFLECTED CEILING PLANS FOR CEILING TYPES
 REF. ARCHITECTURAL PLANS FOR STUD SIZES AND LOCATION OF INSULATION
 REF. LIFE SAFETY PLANS FOR WALL RATINGS

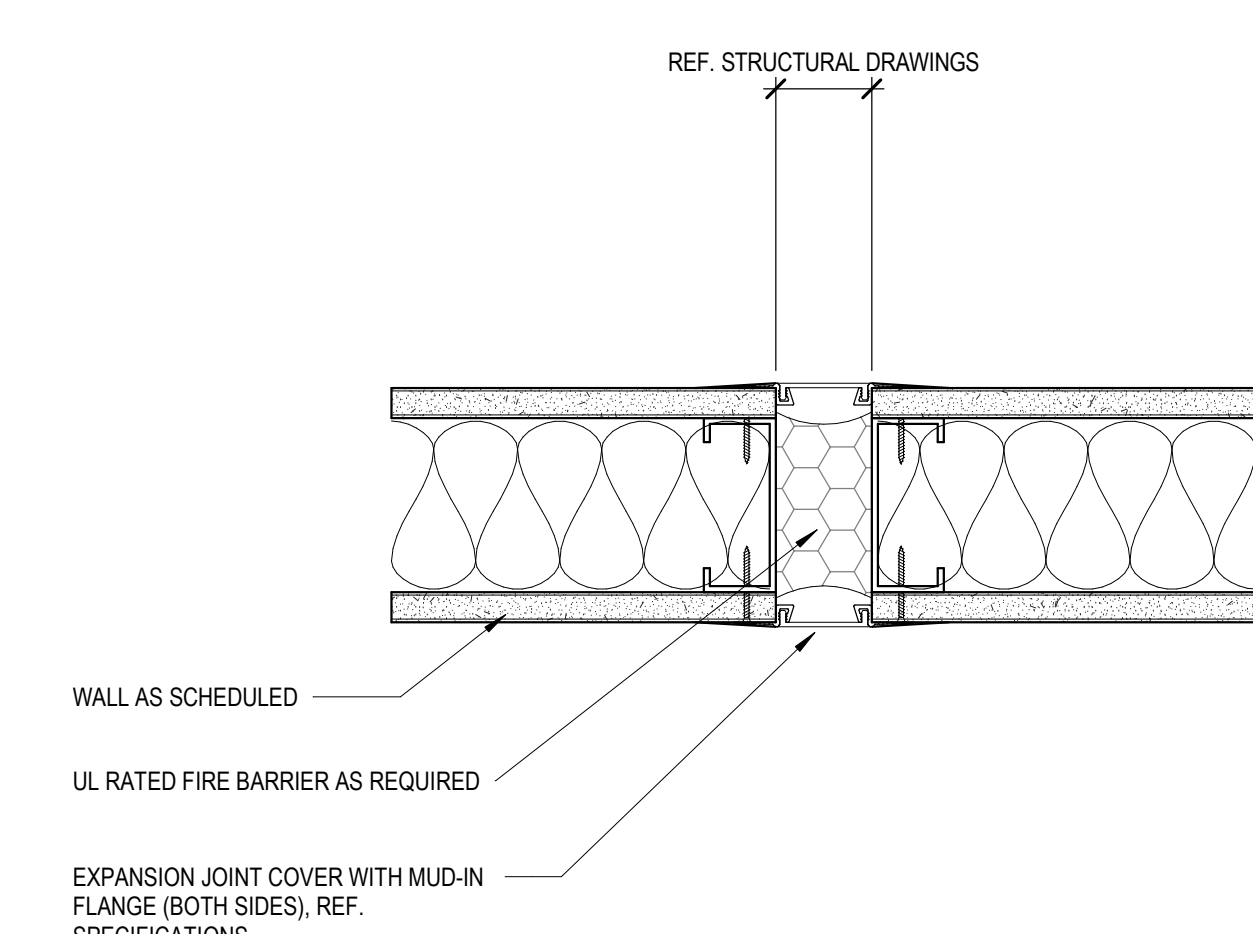
2 EXP. JT. @ CLG TILE TO WALL
A1.14 3" = 1'-0"

 REF. REFLECTED CEILING PLANS FOR CEILING TYPES
 REF. ARCHITECTURAL PLANS FOR STUD SIZES AND LOCATION OF INSULATION
 REF. LIFE SAFETY PLANS FOR WALL RATINGS

3 EXP. JT. @ GYP CLG TO WALL
A1.14 3" = 1'-0"


REF. REFLECTED CEILING PLANS FOR CEILING TYPES

4 EXP. JT. @ GYP CEILING
A1.14 3" = 1'-0"

 REF. ARCHITECTURAL PLANS FOR STUD SIZES AND LOCATION OF INSULATION
 REF. LIFE SAFETY PLANS FOR WALL RATINGS

5 EXP. JT. @ WALL TO WALL
A1.14 3" = 1'-0"

 REF. ARCHITECTURAL PLANS FOR STUD SIZES AND LOCATION OF INSULATION
 REF. LIFE SAFETY PLANS FOR WALL RATINGS

6 EXP. JT. @ WALL TO WALL
A1.14 3" = 1'-0"

 REF. ARCHITECTURAL PLANS FOR STUD SIZES AND LOCATION OF INSULATION
 REF. LIFE SAFETY PLANS FOR WALL RATINGS

7 EXP. JT. @ WALL TO WALL
A1.14 3" = 1'-0"

06/13/2015

CURRENT SUBMISSION:

No.	Description	Date
1	DESIGN DEVELOPMENT	
2	50% CONSTRUCTION DOCUMENTS	
3	100% CONSTRUCTION DOCUMENTS	

URCA RENOVATIONS
INTERIOR DETAILS

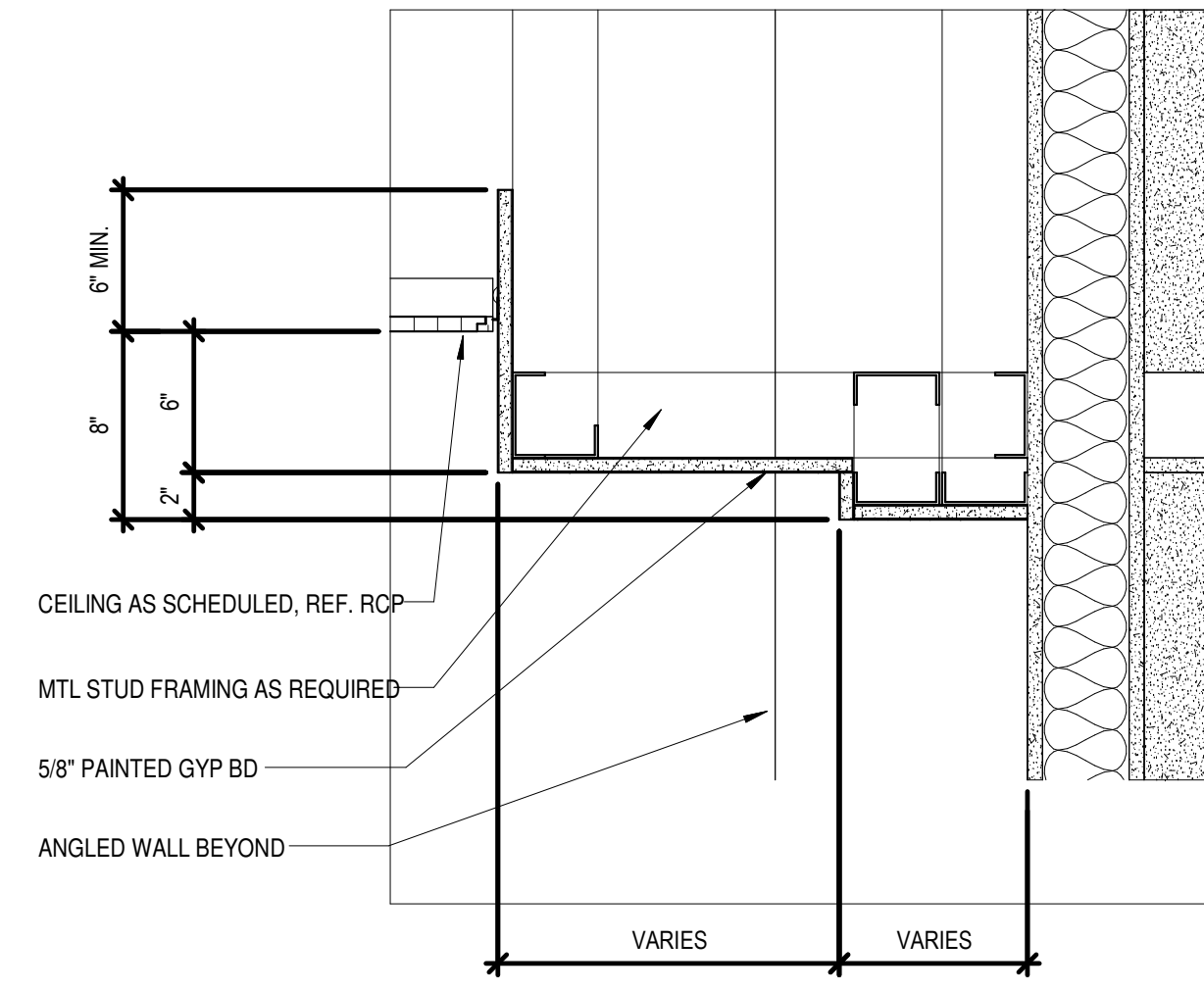
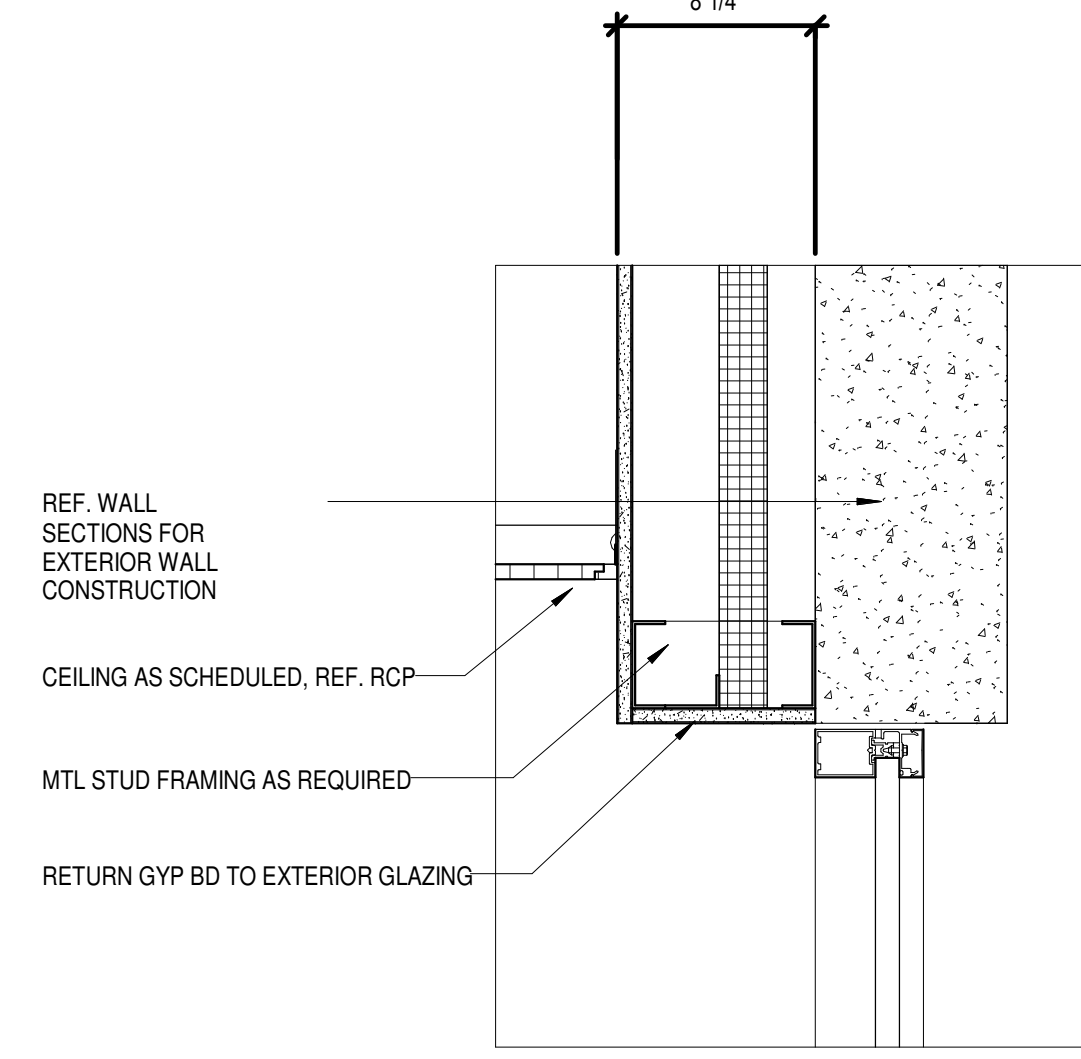
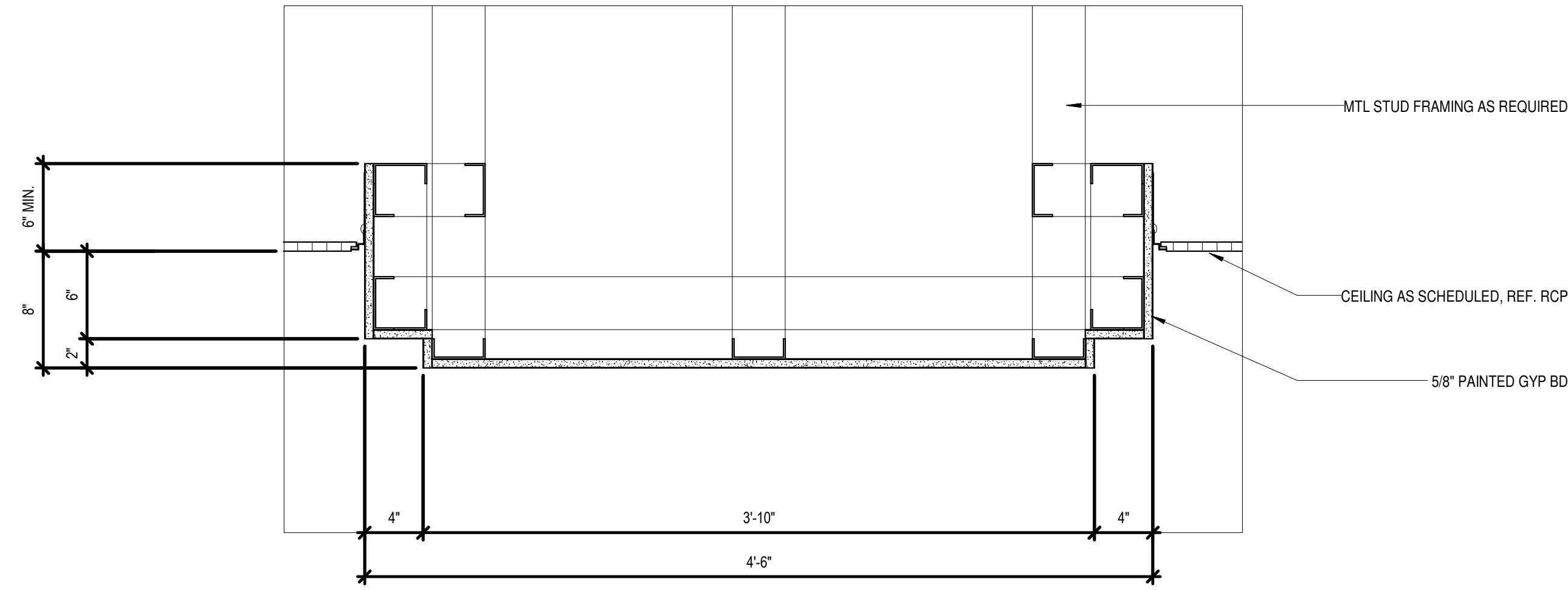
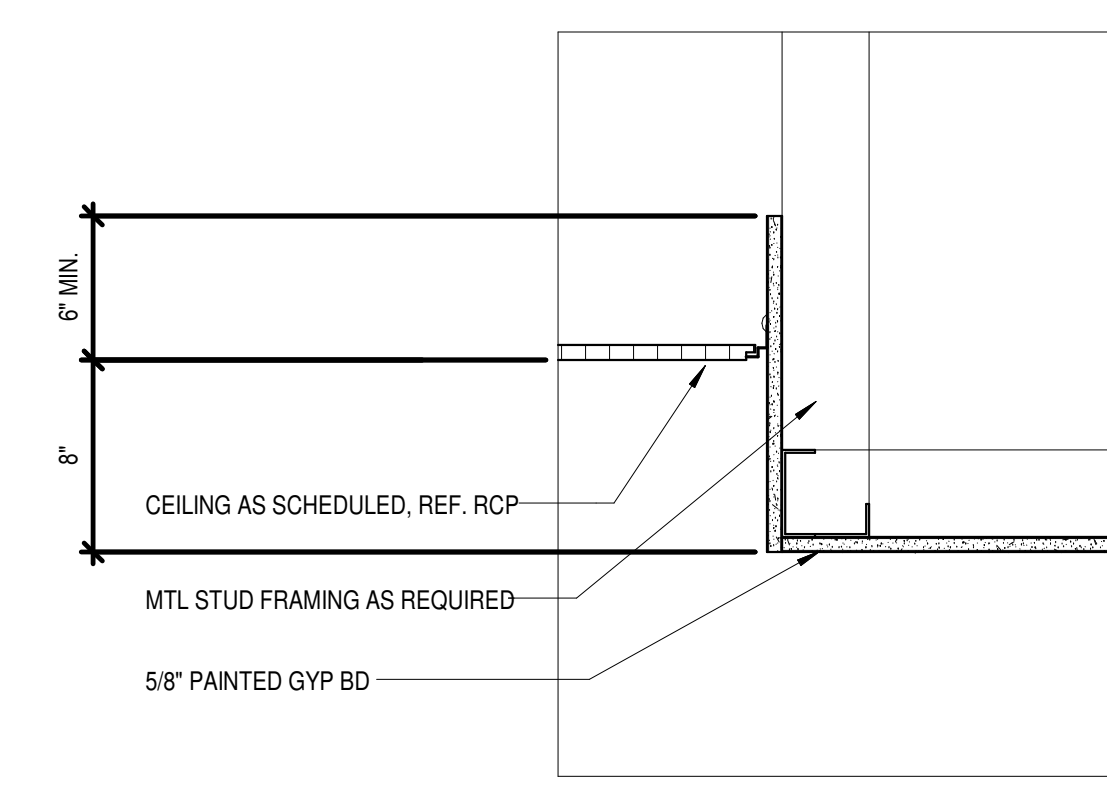
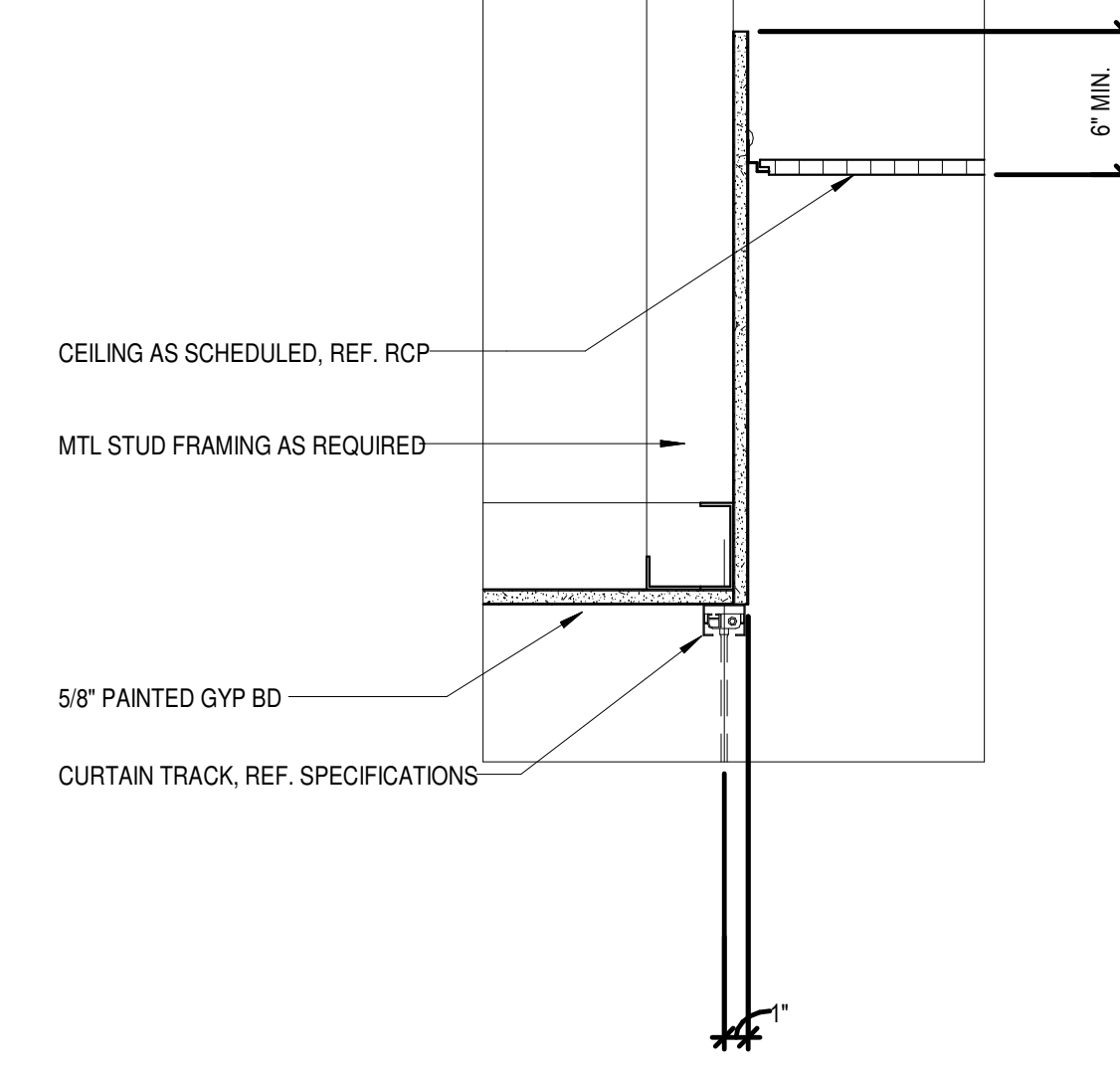
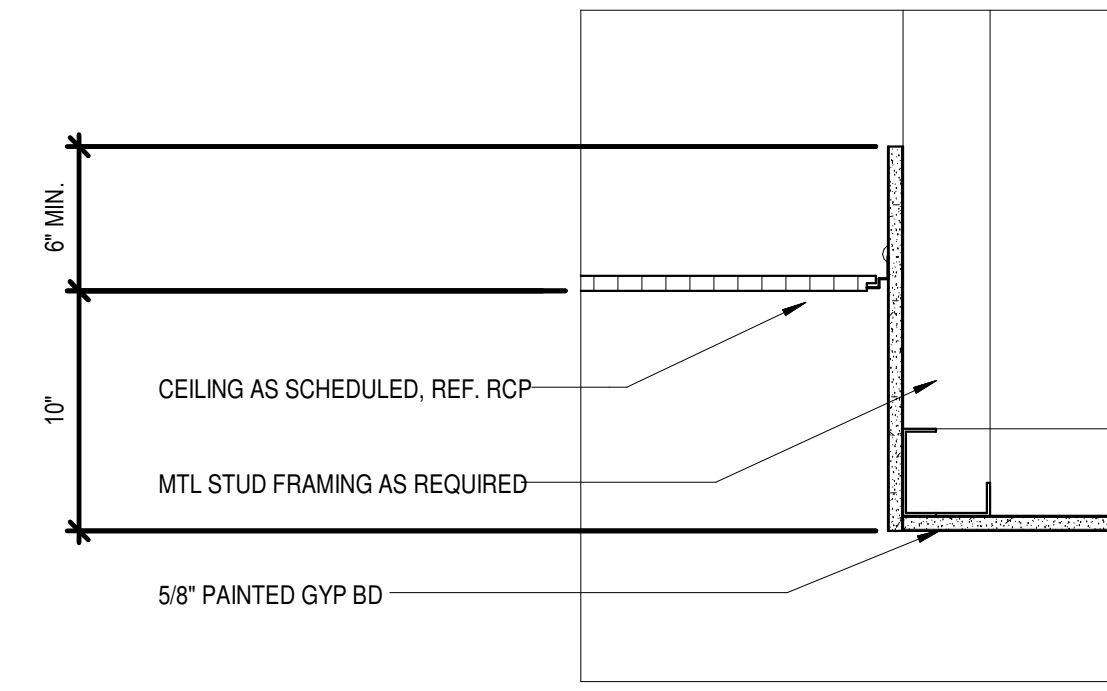
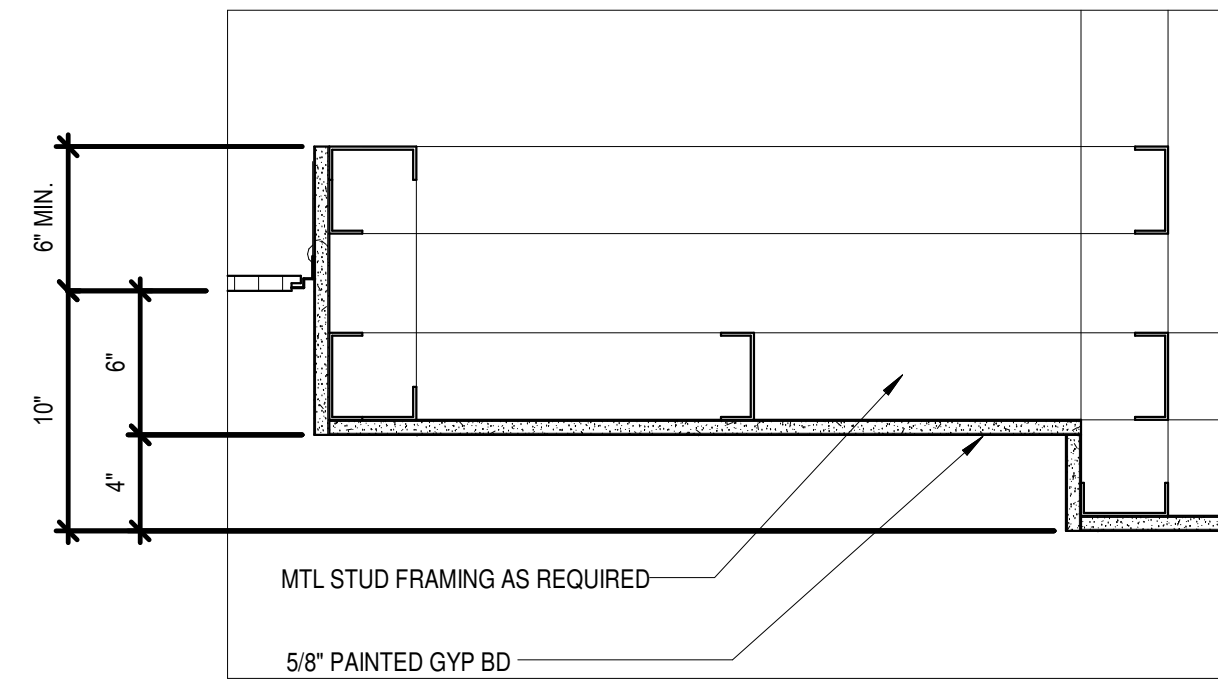
PROJECT SCALE: AS SPECIFIED



TDG ARCHITECTS

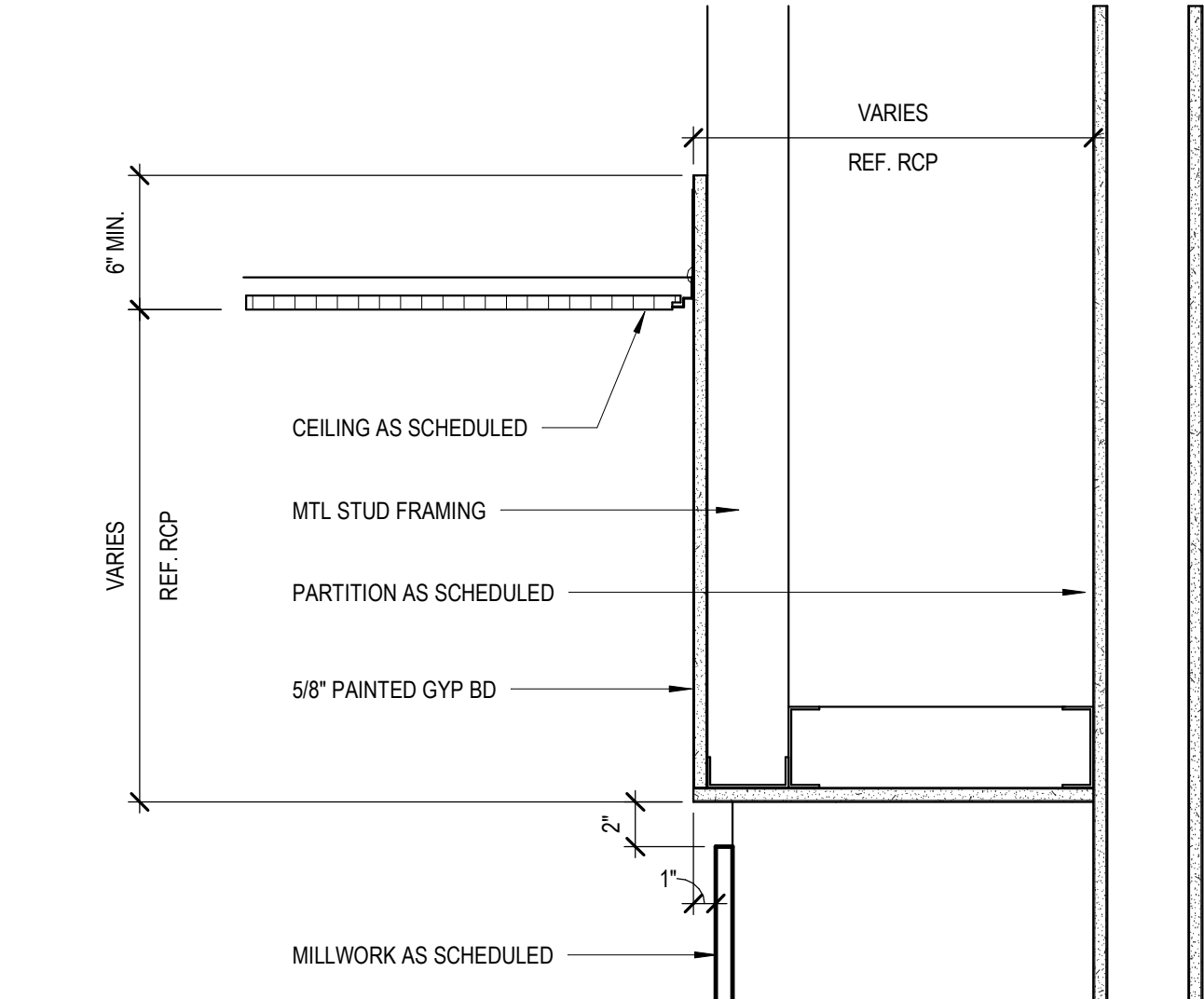
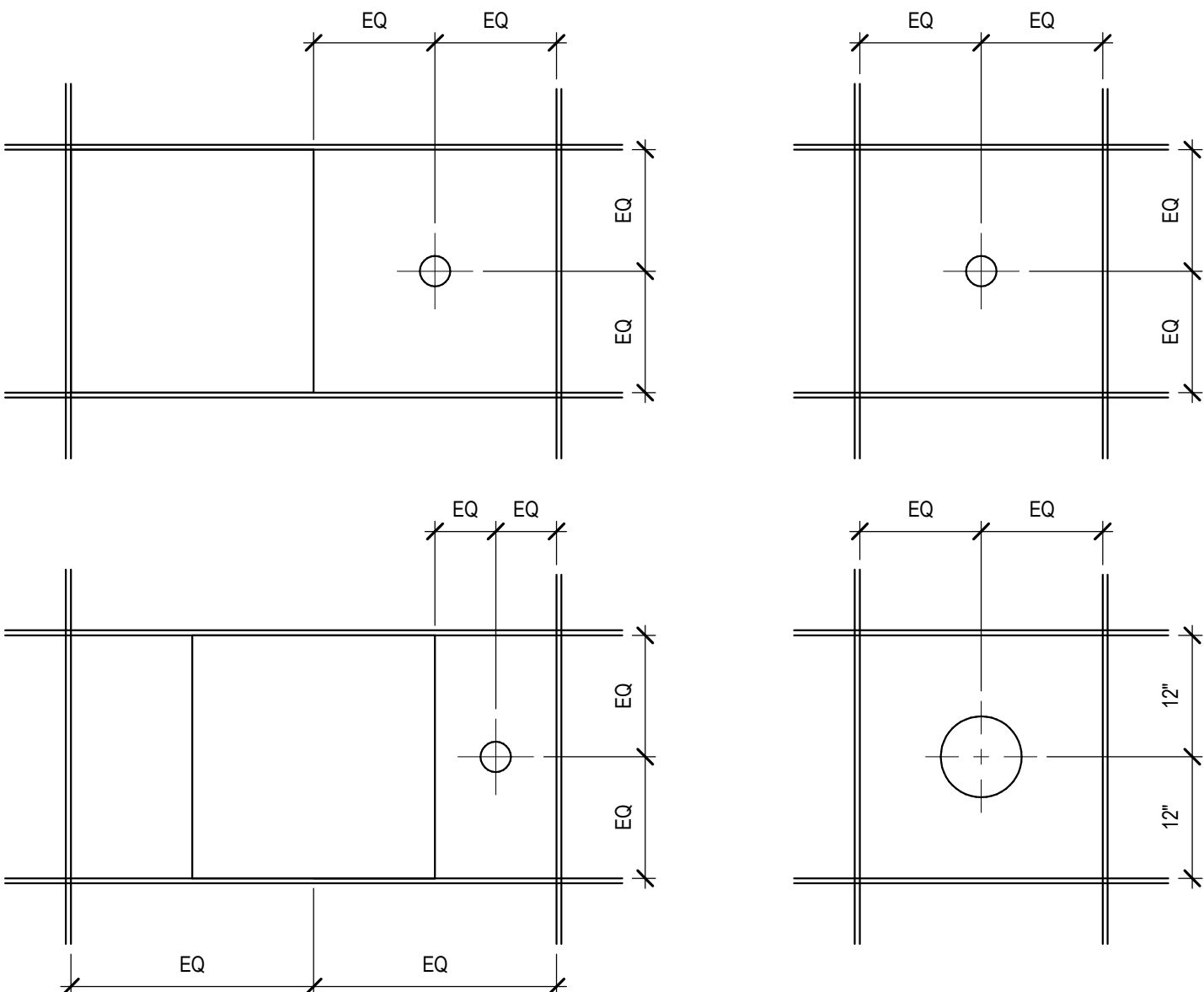
#64 Zabidul House
Bethel Highway South
Nassau, Bahamas
242-322-1251
242-322-1298

#12 Buren Retro Road
Nassau, Bahamas
242-325-1112
242-325-1158

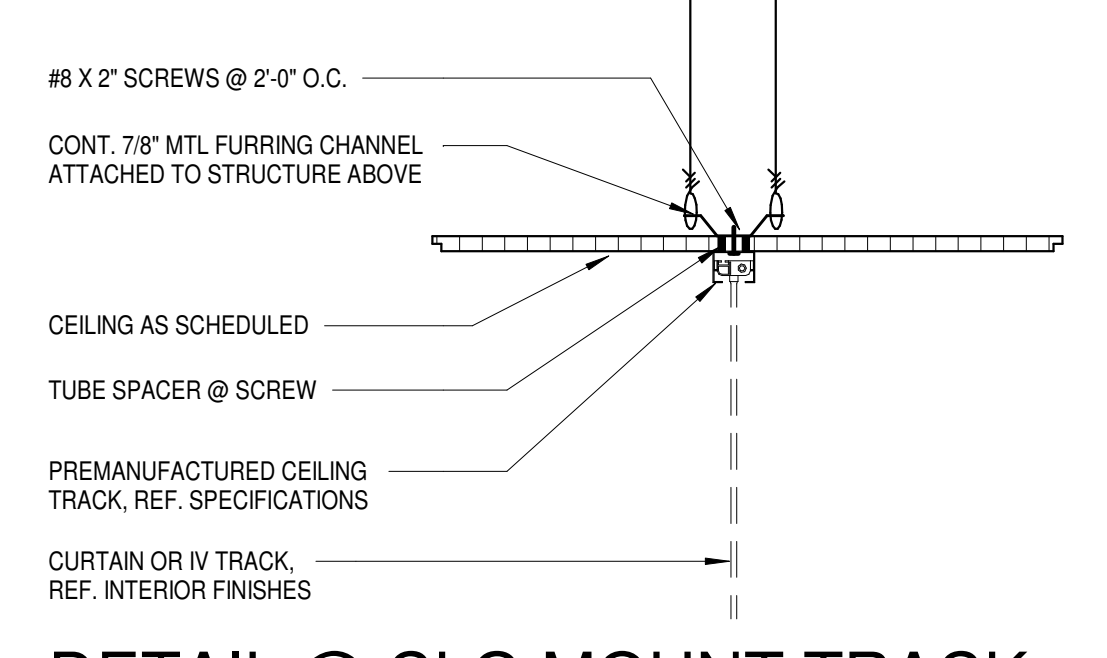


1 RCP DETAIL
A1.15 / 1 1/2\"/>

GENERAL NOTES:
1. ALL DEVICES MOUNTED IN LAY IN CEILING TILES, SUCH AS MECHANICAL GRILLS, SPRINKLER HEADS, SPEAKERS, NURSE CALL, EXIT SIGNS, AND SECURITY CAMERAS TO BE CENTERED IN THE TILE AS SHOWN HERE.
2. COORDINATE ALL DEVICES LOCATED IN GYP. BOARD CEILINGS WITH RCP.
3. REFERENCE LIFE SAFETY DRAWINGS FOR GENERAL EGRESS REQUIREMENTS; VERIFY EXACT QUANTITIES AND LOCATIONS WITH LOCAL JURISDICTION; REPORT ANY DISCREPANCIES TO THE ARCHITECT.

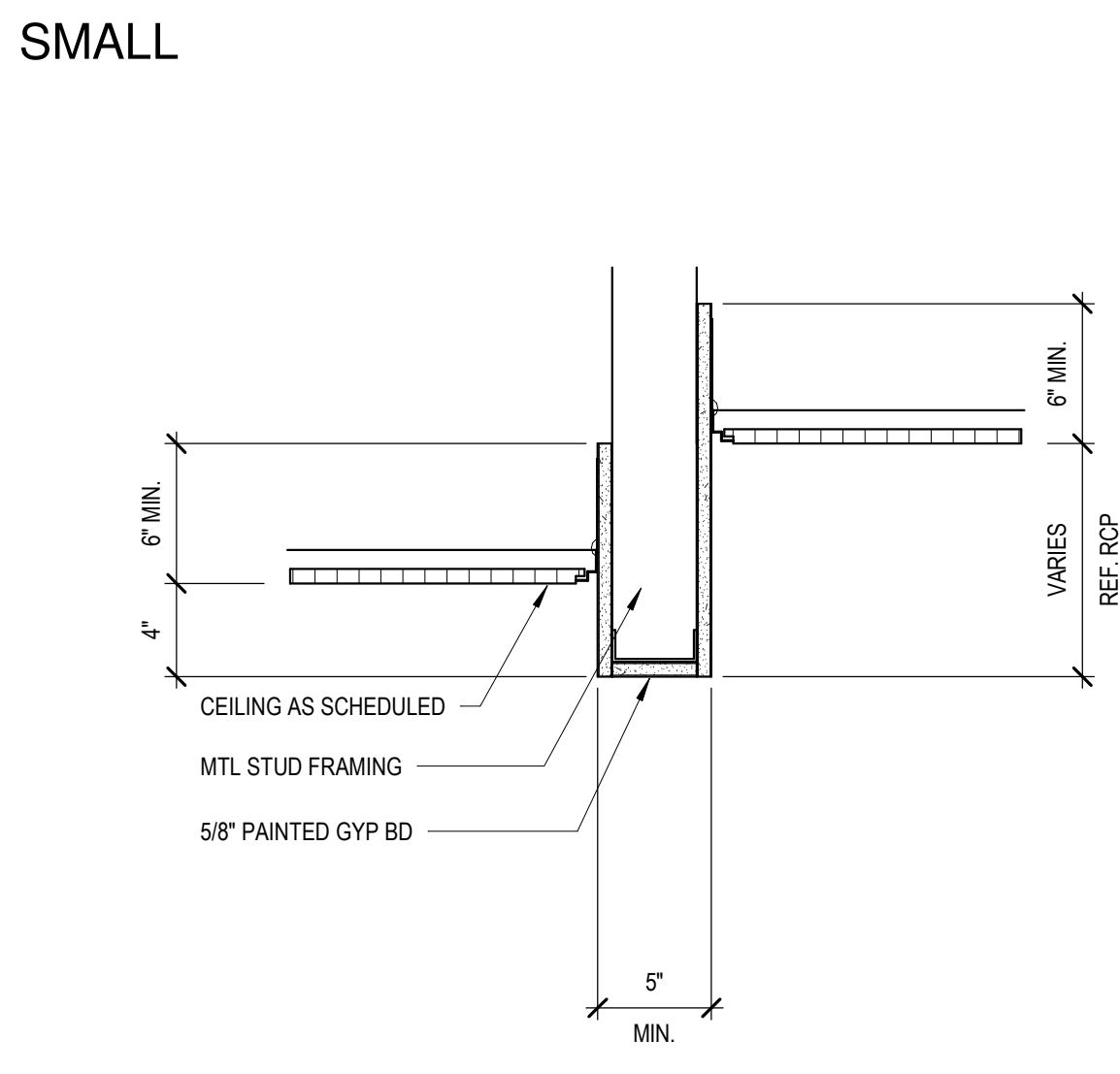
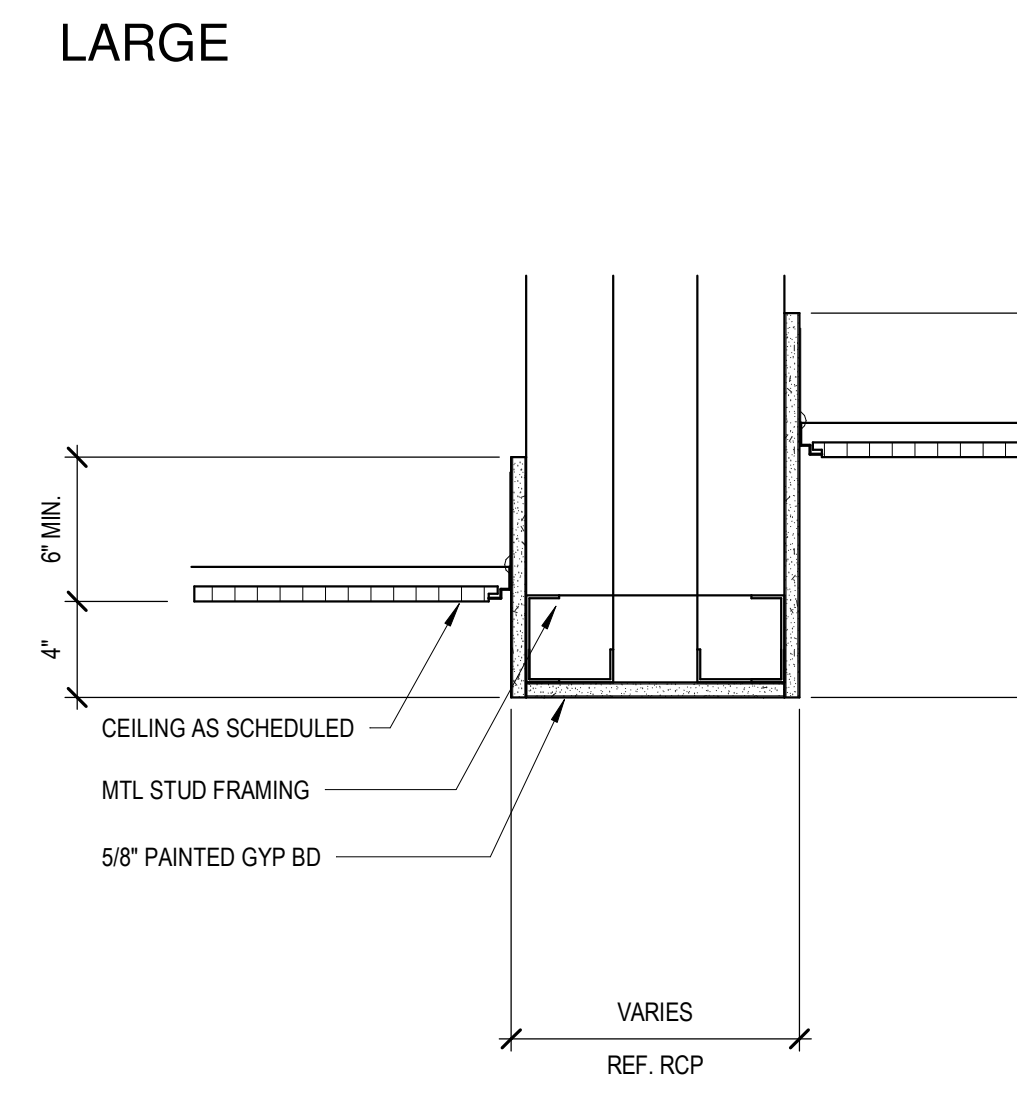


4 DETAIL @ TYP. FURRDOWN
A1.15 / 1 1/2\"/>

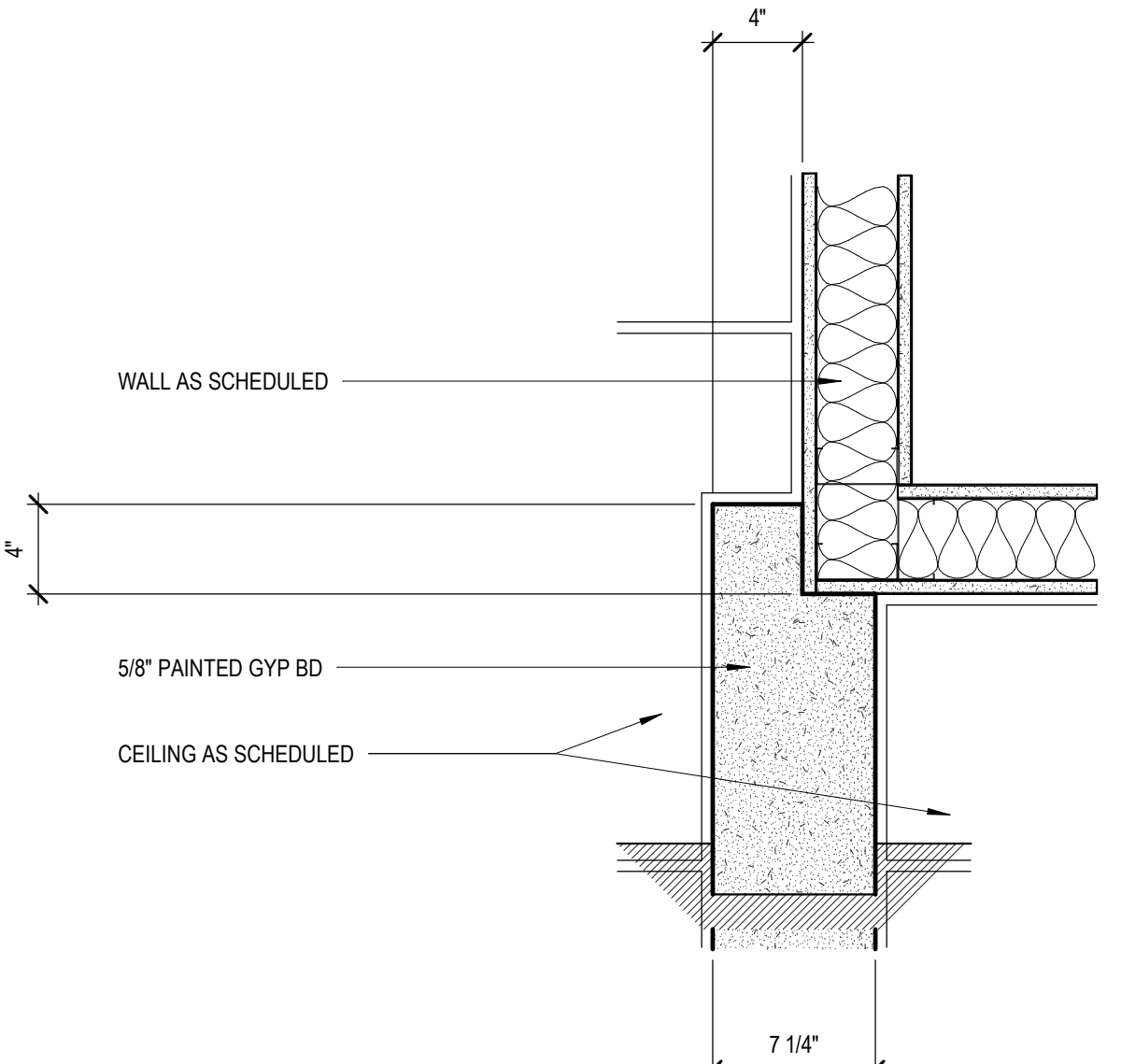


2 DETAIL @ CLG MOUNT TRACK
A1.15 / 1 1/2\"/>

3 CEILING TILE ACCESSORY MOUNTING
A1.15 / 3/4\"/>



5 DETAIL @ TYP. TRANSITIONS
A1.15 / 1 1/2\"/>



6 PLAN DETAIL @ CORNER
A1.15 / 1 1/2\"/>

CURRENT SUBMISSION:

No.	Description	Date
1	DESIGN DEVELOPMENT	
2	50% CONSTRUCTION DOCUMENTS	
3	100% CONSTRUCTION DOCUMENTS	

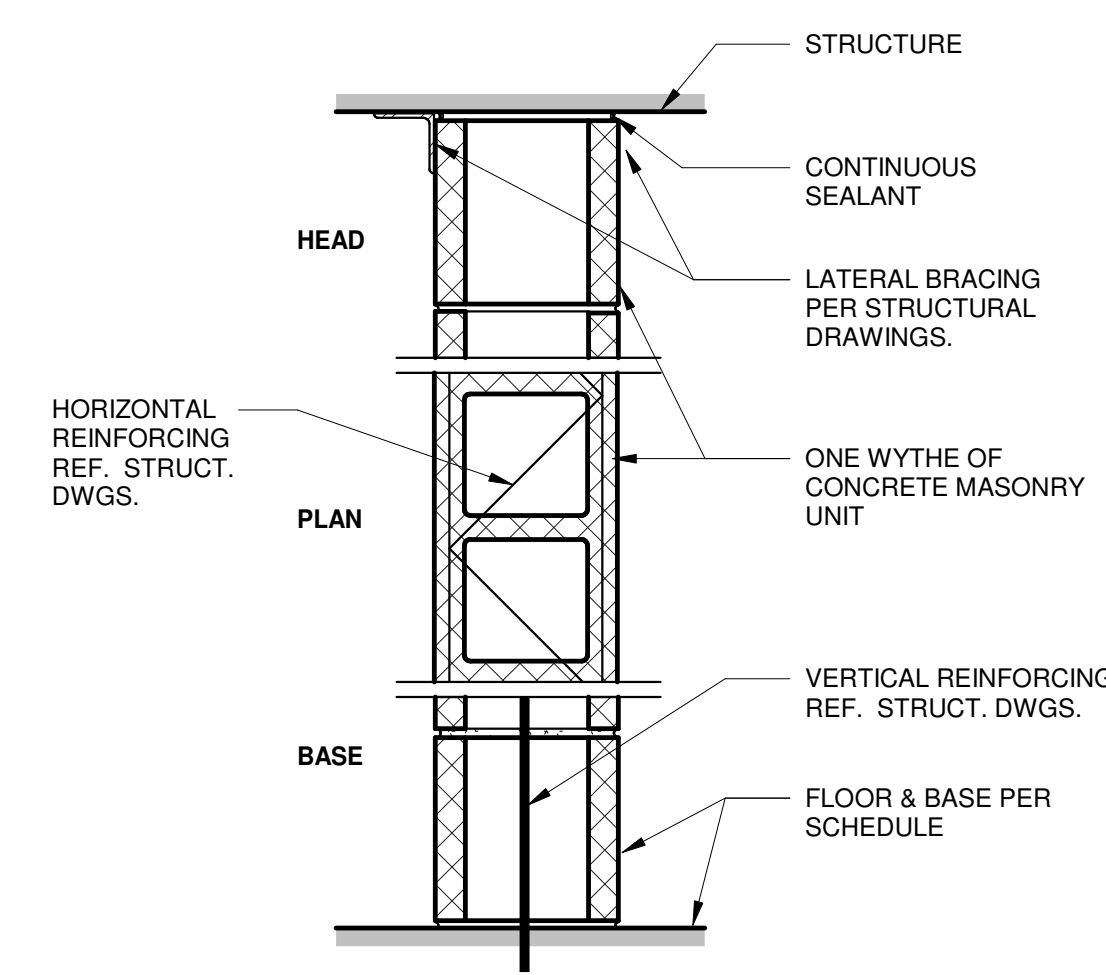
URCA RENOVATIONS

RCP DETAILS

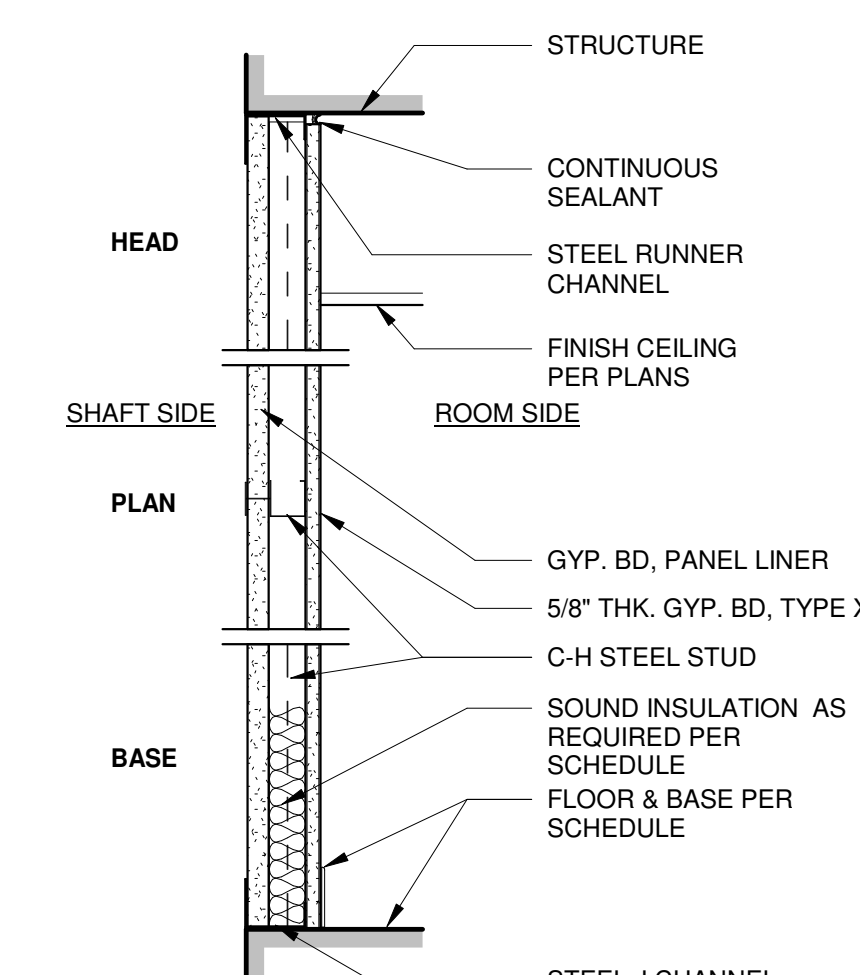
PROJECT SCALE: AS SPECIFIED

DG - 2714-02-22
JOB NO.

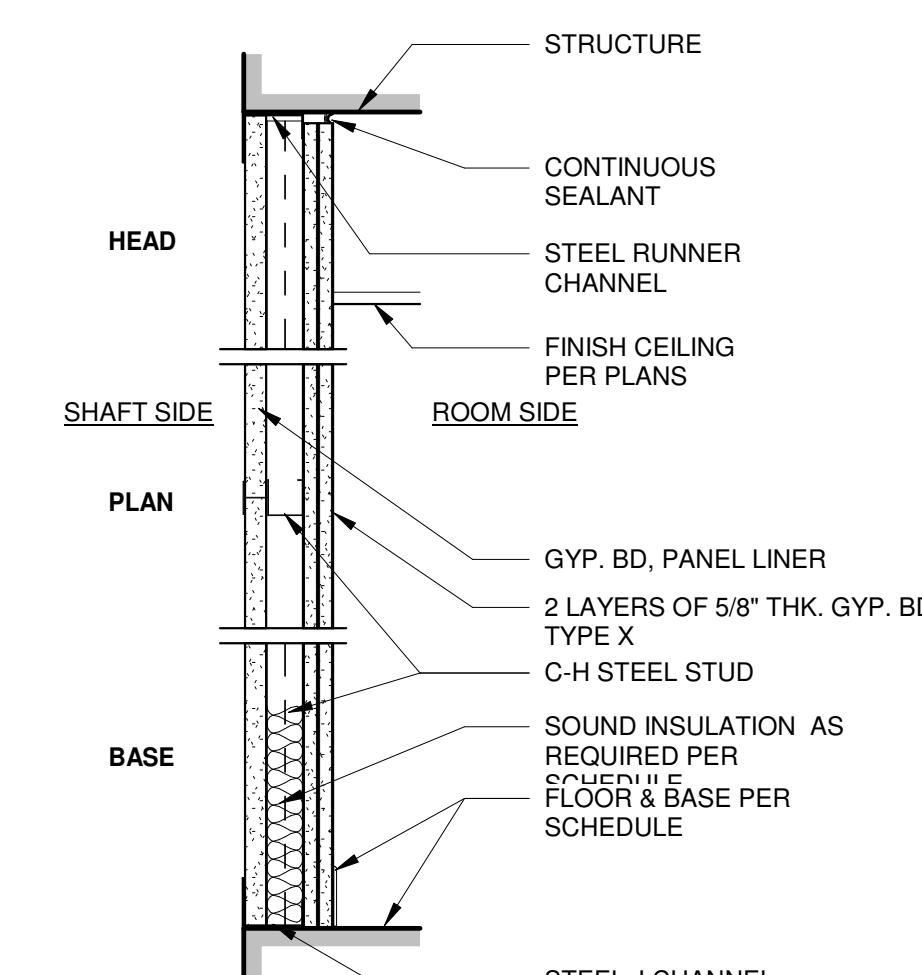
A1.15
SHEET



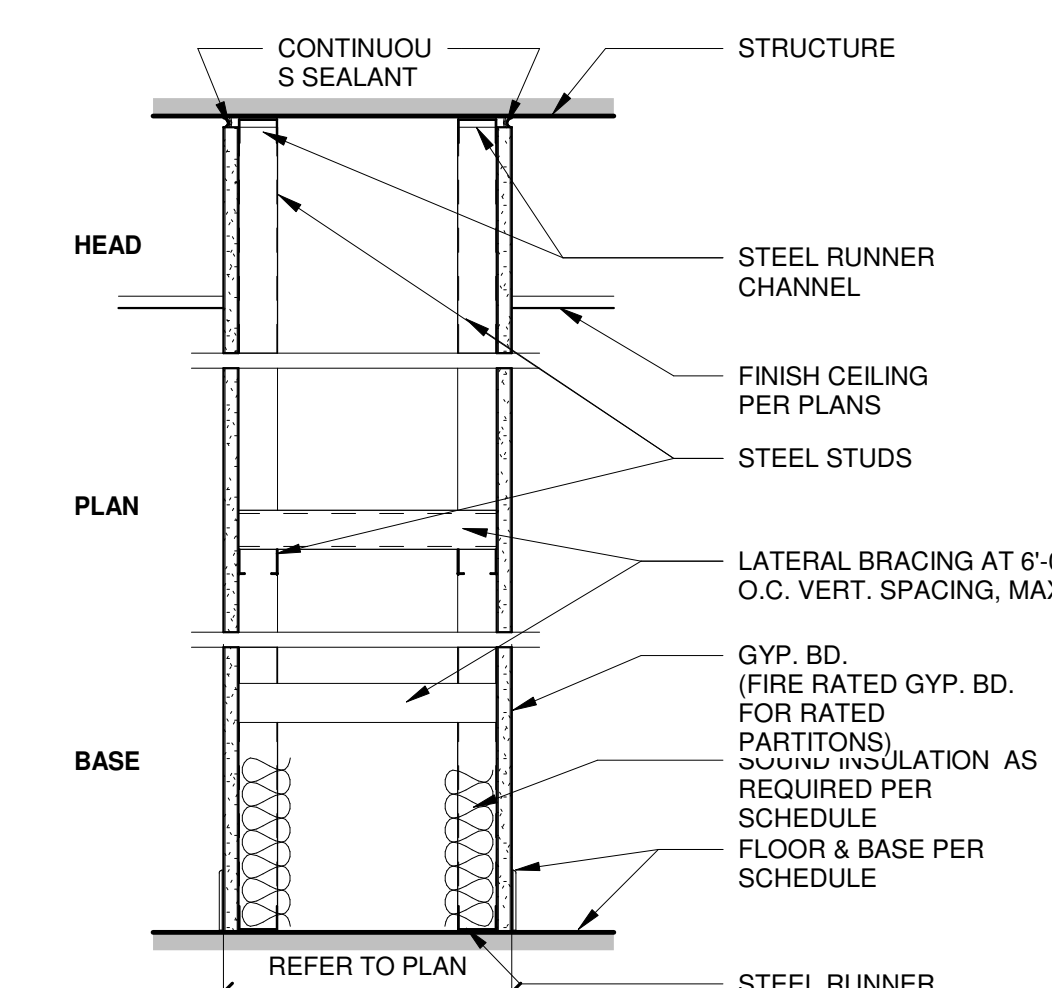
PARTITION TYPE M						
TYPE	STUD SIZE	WALL THK.	FIRE RATING	UL#	STC	REMARKS



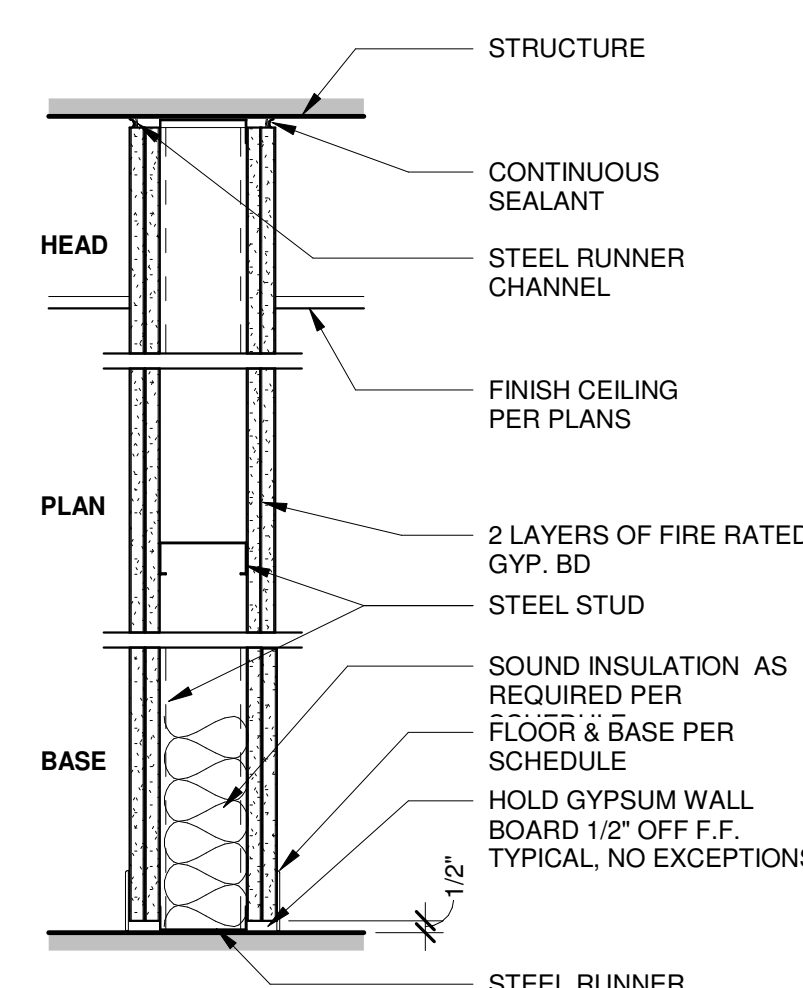
PARTITION TYPE T						
TYPE	STUD SIZE	WALL THK.	FIRE RATING	UL#	STC	REMARKS



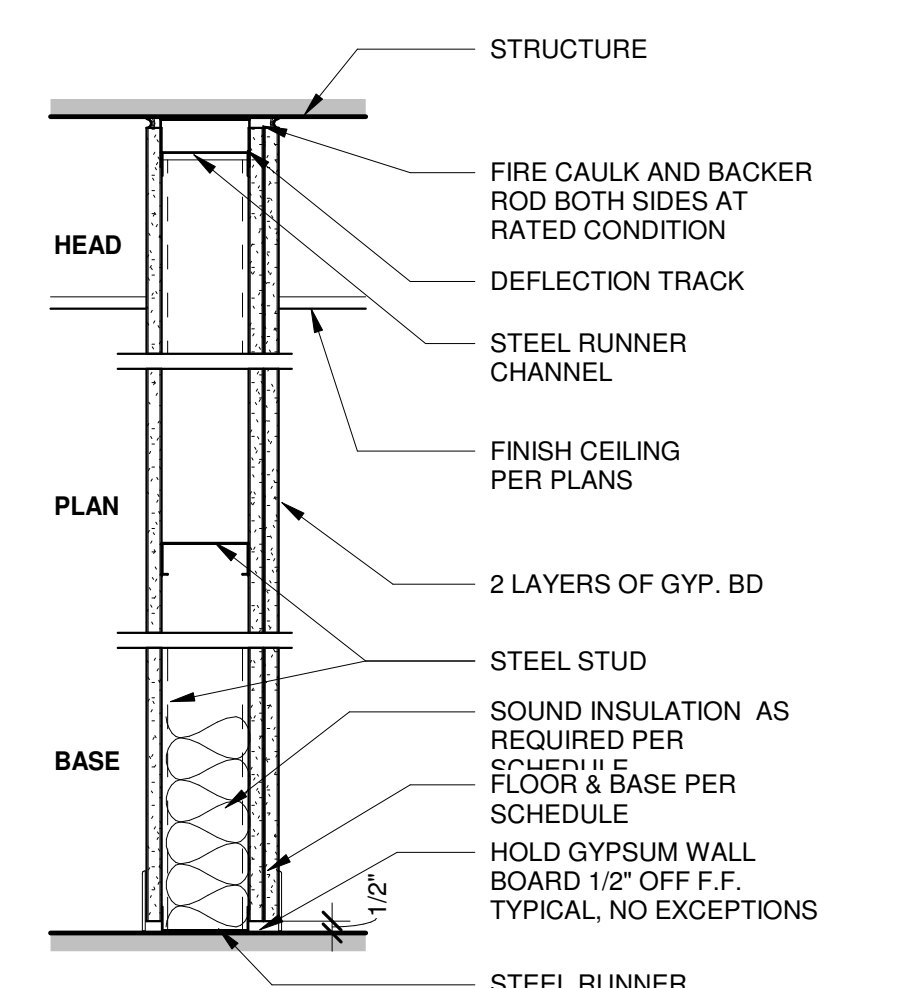
PARTITION TYPE S						
TYPE	STUD SIZE	WALL THK.	FIRE RATING	UL#	STC	REMARKS



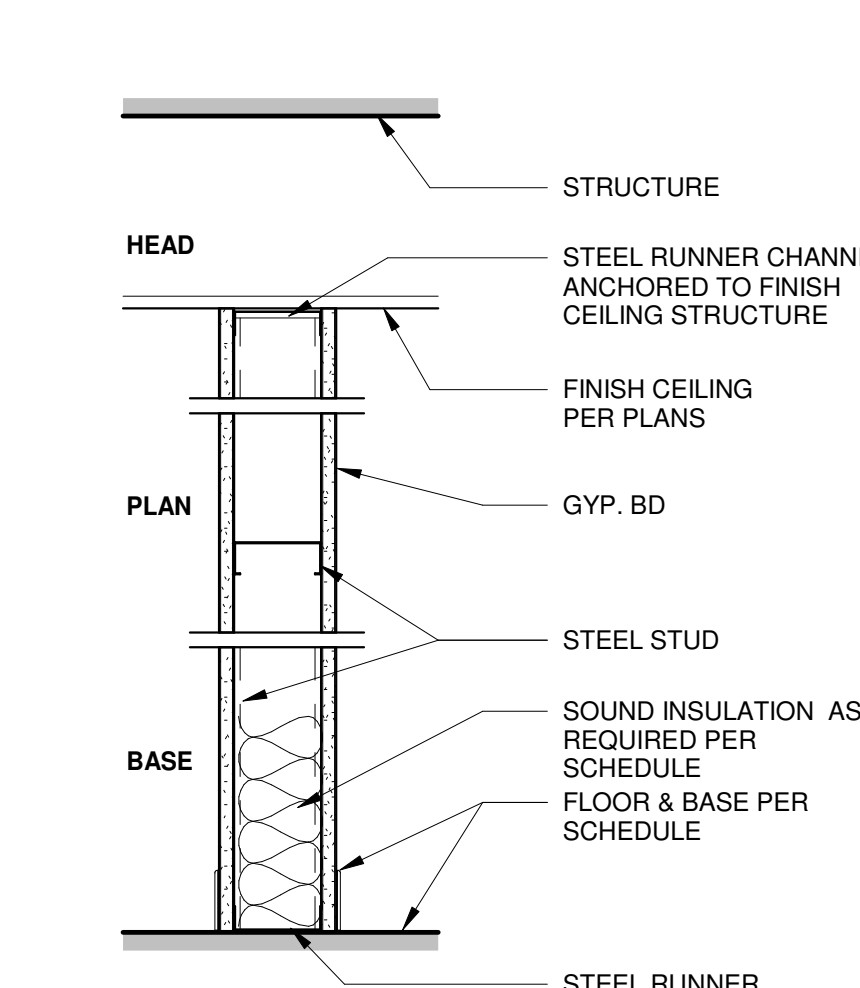
PARTITION TYPE H						
TYPE	STUD SIZE	WALL THK.	FIRE RATING	UL#	STC	REMARKS



PARTITION TYPE G						
TYPE	STUD SIZE	WALL THK.	FIRE RATING	UL#	STC	REMARKS



PARTITION TYPE F						
TYPE	STUD SIZE	WALL THK.	FIRE RATING	UL#	STC	REMARKS



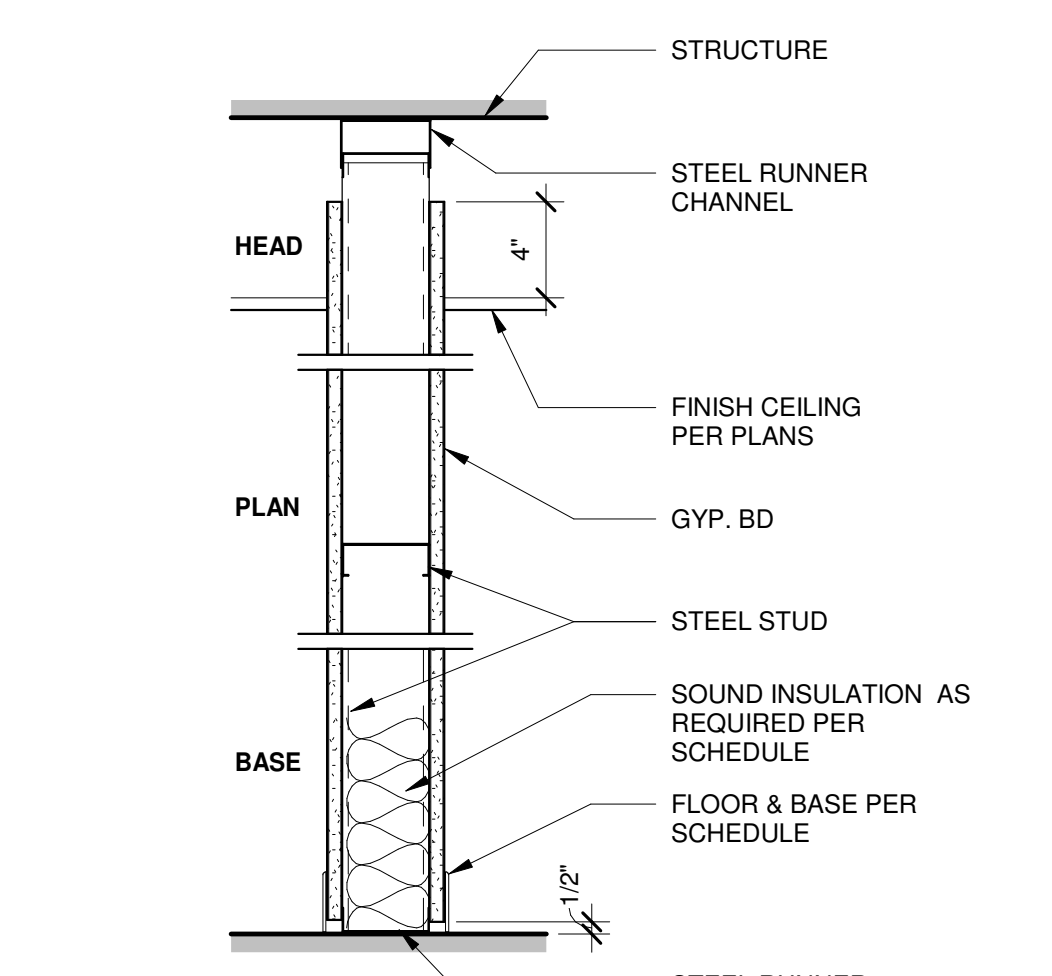
PARTITION TYPE E						
TYPE	STUD SIZE	WALL THK.	FIRE RATING	UL#	STC	REMARKS

PARTITION TAG INFORMATION

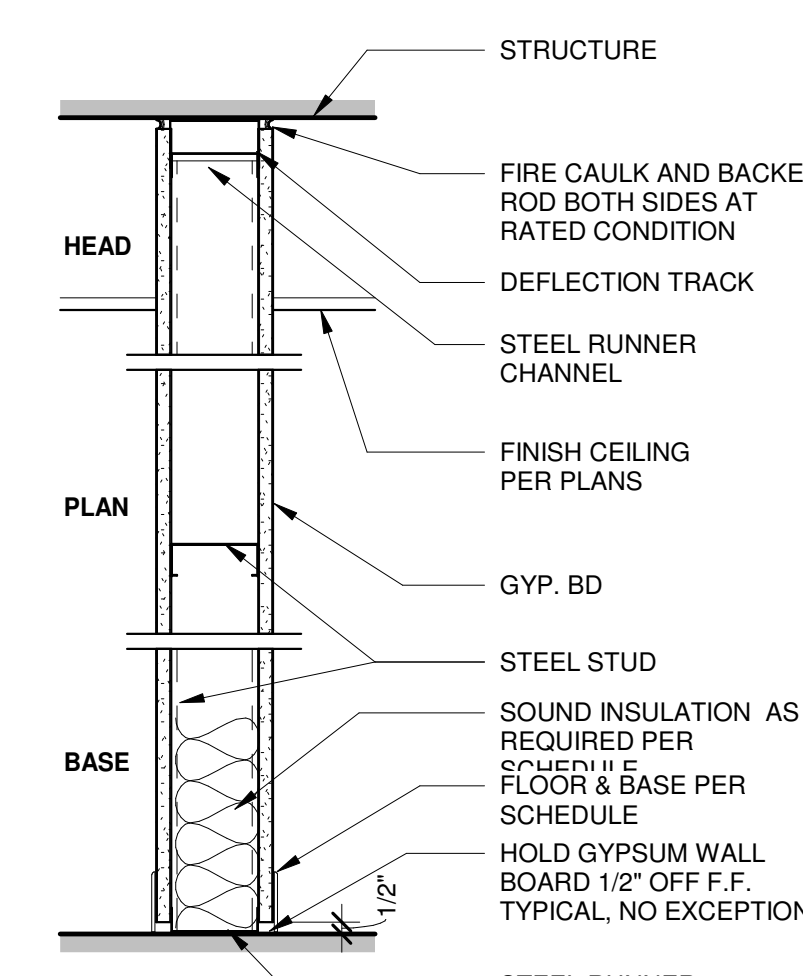
- NOTE: PARTITION TAGS ARE READ LEFT TO RIGHT.
1. THE FIRST CHARACTER IN THE TAG INDICATES WHICH DETAIL TO REFERENCE FOR THE PARTITION CONSTRUCTION.
 2. THE SECOND CHARACTER IN THE TAG INDICATES A REFERENCE FOR THE STRUCTURAL MEMBER (METAL STUD OR CMU) THICKNESS.
 3. THE THIRD CHARACTER IN THE TAG INDICATES:
 - "A" - FOR ACOUSTIC PARTITION CONSTRUCTION
 - "R" - FOR RATED PARTITION CONSTRUCTION
 - "S" - FOR SMOKE PARTITION CONSTRUCTION
 - "T" - FOR RATED/ACOUSTIC PARTITION CONSTRUCTION
 - "V" - FOR RATED/SMOKE PARTITION CONSTRUCTION
 - "W" - FOR ACOUSTIC/SMOKE PARTITION CONSTRUCTION
 - "Z" - FOR RATED/ACOUSTIC/SMOKE PARTITION CONSTRUCTION
 4. THE FOURTH CHARACTER IS FOR SPECIAL CONSTRUCTION CONDITIONS CALLED OUT ON SHEET A6.02 SUCH AS HEAD PARTITION DETAIL 1, 2, 3, 4

GENERAL PARTITION NOTES

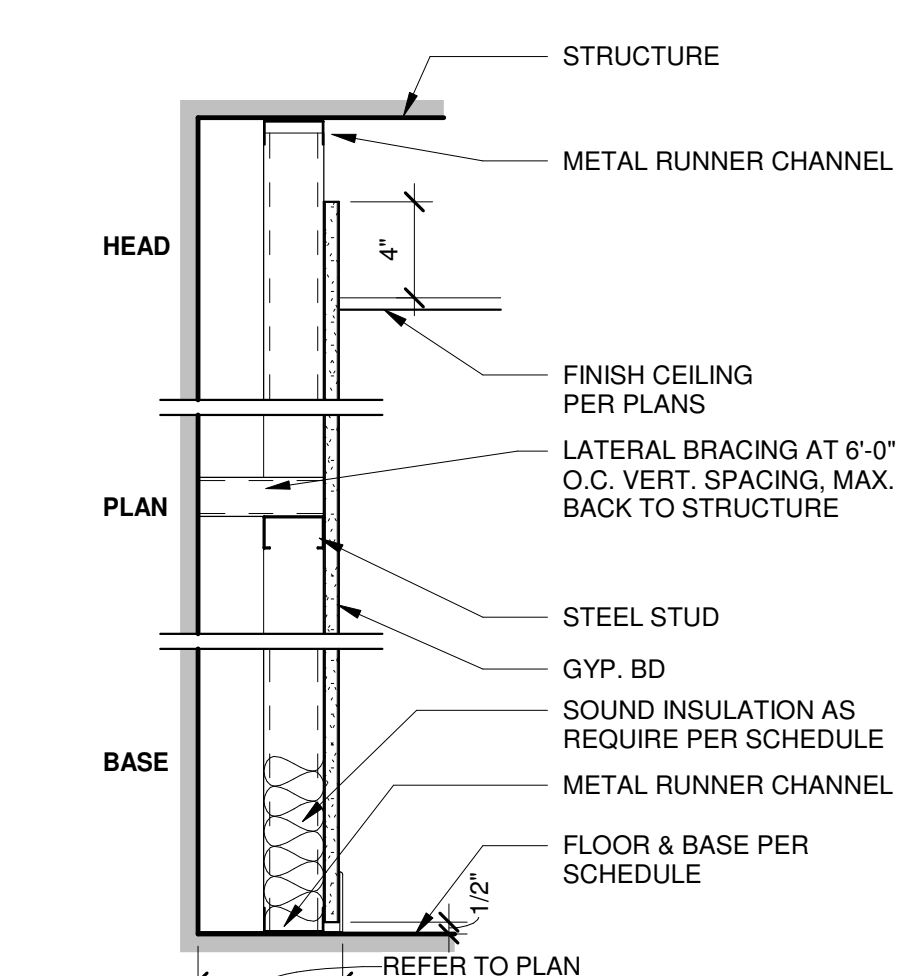
1. ALL STUD GAUGES AND LIMITING HEIGHTS IN GYPSUM WALL BOARD REFERENCE SPECIFICATIONS.
2. ALL PARTITIONS CONTAINING PLUMBING OR HAVING AN EXTERIOR FACE TO BE INSULATED.
3. THE FOLLOWING LIST OF ROOMS (IF USED) SHALL HAVE THEIR PERIMETER PARTITIONS INSULATED USING MINERAL WOOL:
 - ALL ELECT. MECH. ROOMS
 - ALL EQUIPMENT/LIGHTING ROOMS
4. THE FOLLOWING LIST OF ROOMS (IF USED) SHALL HAVE THEIR PERIMETER PARTITIONS INSULATED WITH SOUND ATTENUATION BATTS AS SPECIFIED.
 - TOILET ROOMS
 - OFFICES
5. ALL RATED PARTITIONS TO EXTEND FROM TOP OF SLAB TO UNDERSIDE OF STRUCTURE. SEAL TOP AND BOTTOM TYPICAL.
6. ALL INTERIOR ROOF DRAINS AND OVERFLOW DRAINS TO BE WRAPPED CONTINUOUSLY WITH SOUND ATTENUATION INSULATION.
7. REFER TO PLANS FOR LOCATION OF PARTITION TYPES. C3 IS THE TYPICAL PARTITION TYPE UNLESS NOTED OTHERWISE.
8. "UNDERSIDE OF STRUCTURE" INDICATED AT HEAD CONDITION FOR EACH PARTITION TYPE IS DIAGRAMMATIC ONLY, AND DOES NOT INDICATE EXACT CONSTRUCTION CONDITIONS.
9. INSTALL FRAMING AND GYPSUM WALL BOARD TO OFFSET AROUND STRUCTURAL MEMBERS OR OTHER OBSTRUCTIONS TO MAINTAIN FIRE RESISTIVE RATINGS.
10. WHERE GYPSUM WALL BOARD EXTENDS TO THE UNDERSIDE OF STRUCTURE, STOP GYPSUM WALL BOARD 1/2" BELOW LINE OF STRUCTURE AND SEAL AS REQUIRED.
11. FIRE RESISTANT, RATED PARTITIONS TO BE INSTALLED WITH FIRESTOP SEALANT, UNLESS NOTED OTHERWISE.
12. NON-RATED PARTITIONS TO BE INSTALLED WITH ACOUSTICAL SEALANT, UNLESS NOTED OTHERWISE.
13. REFER MECHANICAL DRAWINGS FOR DETAILS ON PIPE PENETRATIONS THROUGH ACOUSTICAL PARTITIONS AS WELL AS RATED PARTITIONS.
14. INSTALL FIRE RETARDANT, TREATED BLOCKING IN PARTITIONS AS REQUIRED ON DRAWINGS.
15. ALL PARTITIONS SCHEDULED TO RECEIVE TILE OR FRP. SHALL BE CONSTRUCTED OF WATER-RESISTANT CORE GYPSUM WALL BOARD.
16. PER HOLD PREVENTION GUIDELINES, DO NOT INSTALL GYPSUM WALL BOARD IN DIRECT CONTACT WITH THE FLOOR. ALL PARTITIONS SHALL BE SHIMMED 1/2" OFF THE FLOOR WITH NON-POROUS SHIMS. PLASTIC NON-POROUS HORSESHOE SHIMS ARE RECOMMENDED. GYPSUM WALL BOARD SHIMS ARE NOT ACCEPTABLE.



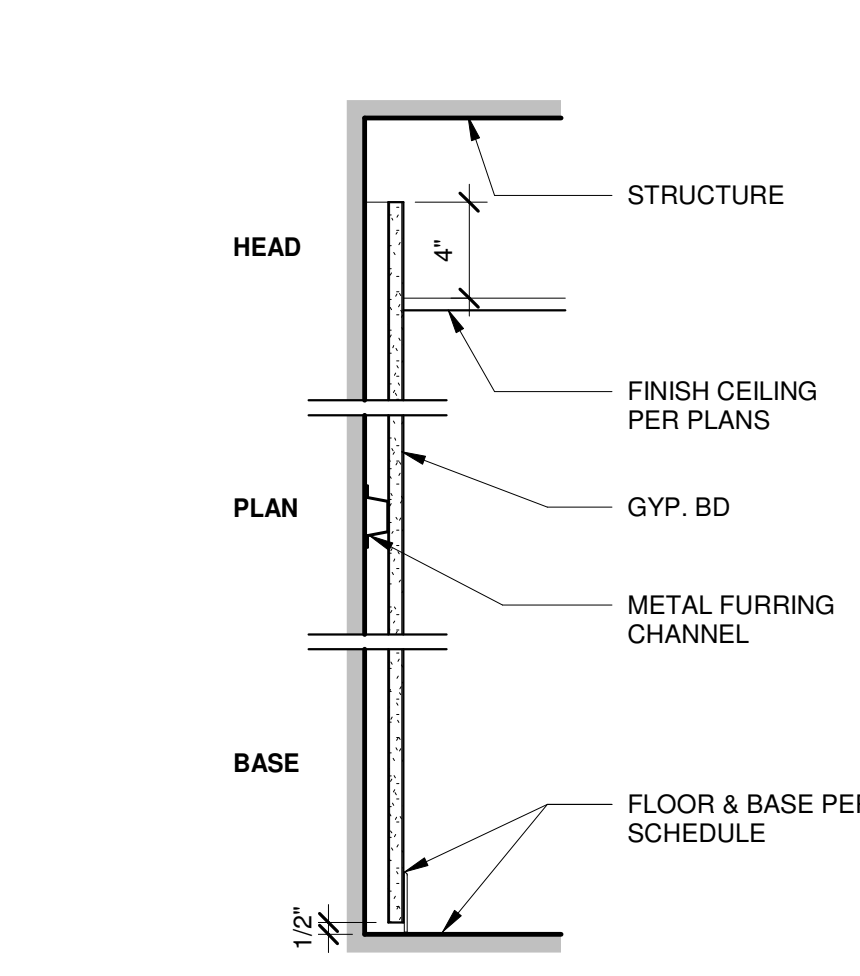
PARTITION TYPE D						
TYPE	STUD SIZE	WALL THK.	FIRE RATING	UL#	STC	REMARKS



PARTITION TYPE C						
TYPE	STUD SIZE	WALL THK.	FIRE RATING	UL#	STC	REMARKS



PARTITION TYPE B						
TYPE	STUD SIZE	WALL THK.	FIRE RATING	UL#	STC	REMARKS



PARTITION TYPE A						
TYPE	STUD SIZE	WALL THK.	FIRE RATING	UL#	STC	REMARKS

06/13/2015

CURRENT SUBMISSION:		
No.	Description	Date
1	DESIGN DEVELOPMENT	
2	50% CONSTRUCTION DOCUMENTS	
3	100% CONSTRUCTION DOCUMENTS	

URCA RENOVATIONS

PARTITION SCHEDULE

PROJECT SCALE: AS SPECIFIED

